

TUBE GLIDES, FEET, BUMPERS & CASTERS





TUBE INSERT & GLIDE SELECTOR GUIDE282



SQUARE INSERT GLIDES.....283 - 285



SQUARE THREADED INSERT GLIDES286 - 287



SQUARE AND ANGLE IRON CAPS..... 288



ROUND TUBE INSERT GLIDES289 - 292



ROUND THREADED INSERT GLIDES293 - 294



FERRULE & TUBE CAPS 295



RECTANGLE TUBE INSERT GLIDES297 - 298



TACK, SCREW-IN & ADHESIVE GLIDES..... 299



PLASTIC BASED LEVELERS 300 - 302



ADJUSTABLE FEET 303



BASE CAPS & RIVET FEET 304



STEM BUMPERS 305 - 309



BUMPERS & STICK-ON FEET 310 - 312



CASTERS 313 - 317



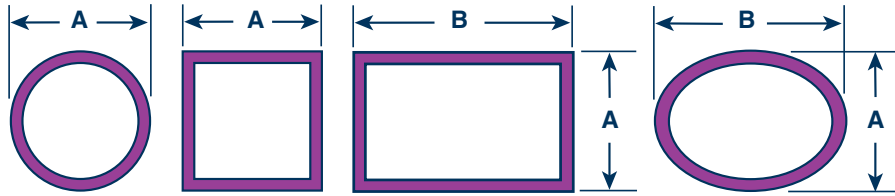
CASTER SELECTOR GUIDE..... 317

TUBE GLIDES, FEET, BUMPERS & CASTERS

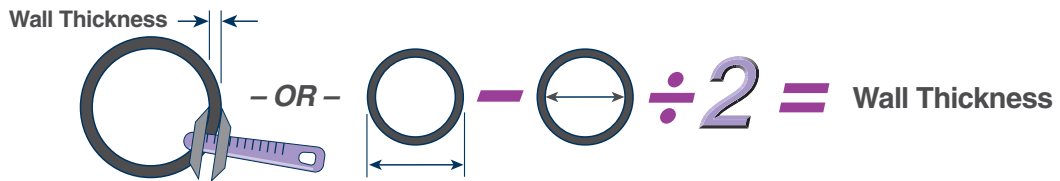


TUBE INSERT & GLIDE SELECTOR GUIDE

Step 1: Determine Tube Size = Actual OD of Tubing



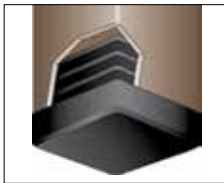
Step 2: Determine the Wall Thickness to Determine Tube Gauge



Wall Thickness (in)	0.239	0.224	0.209	0.194	0.179	0.164	0.149	0.134	0.120	0.109	0.095	0.083	0.072	0.065	0.058	0.049	0.042	0.035	0.028
(mm)	6.1	5.7	5.3	4.9	4.5	4.2	3.8	3.4	3	2.8	2.4	2.1	1.8	1.7	1.5	1.2	1.1	0.9	0.7
Tube Gauge	3	4	5	6	7	8	9	10	11	12	13	14	15	16	17	18	19	20	22

Step 3: Select your desired...

Style:



Ribbed Design – Fits Multiple Gauges Non-Load Bearing



Straight Wall Design – Fits Single Gauge Load Bearing

Shape & Finish:

Flat, Rounded, Angled, or Articulating



Polished, Textured (Matte), or Chromed





SQUARE INSERT GLIDES

SQR Series Square Multi-Gauge Ribbed Tube Inserts



Specifications:

- Material: Low-Density Polyethylene
- Surface Finish: See Table
- Color: See Table

Features:

- Ideal for aesthetic or light-duty load bearing applications
- Perimeter rib design allows for easy assembly and a secure fit
- Used on a wide range of furniture and metal tubing applications

Imperial

Black Item No.		White Item No.		Tube OD		Wall Thickness		Bulk Pack Qty.
Polished	Textured	Polished	Textured	in	Tube Gauge	in		
SQR051620A	—	—	—	0.500	16-20	0.035-0.065	10000	
SQR111193A	SQR111211A	SQR111229A	—	0.500	14-20	0.035-0.083	2500	
SQR061620C	—	—	—	0.625	16-20	0.035-0.065	5000	
SQR111195A	SQR111213A	—	—	0.625	12-20	0.035-0.109	2500	
SQR111196A	SQR111214A	SQR111232A	—	0.750	12-20	0.035-0.109	2500	
SQR071620C	—	—	—	0.750	16-20	0.035-0.065	5000	
SQR081618A	—	—	—	0.875	16-18	0.049-0.065	4000	
SQR101014A	—	SQR101014D	—	1.000	10-14	0.083-0.134	2000	
SQR101420D	—	—	—	1.000	14-20	0.035-0.083	2500	
SQR111200A	SQR111218A	SQR111235A	—	1.000	11-19	0.042-0.120	2500	
SQR111620A	—	—	—	1.125	16-20	0.035-0.065	2000	
—	—	SQR199150A	—	1.125	14-20	0.035-0.083	2000	
SQR121014A	—	—	—	1.250	10-14	0.083-0.134	2000	
SQR121420A	—	—	—	1.250	14-20	0.035-0.083	2000	
—	—	—	SQR111616A	1.250	11-19	0.042-0.120	1500	
SQR131016A	—	—	—	1.375	10-16	0.065-0.134	900	
SQR111202A	SQR111220A	SQR111238A	—	1.375	11-19	0.042-0.120	1500	
SQR151014A	—	—	—	1.500	10-12	0.083-0.109	1000	
SQR111503A	SQR111541A	SQR111617A	—	1.500	12-19	0.042-0.120	1000	
SQR151418A	—	—	—	1.500	14-18	0.049-0.083	1000	
SQR171014A	SQR171014B	SQR171014C	—	1.750	10-14	0.083-0.134	500	
SQR171418A	—	SQR171418C	—	1.750	14-18	0.049-0.083	500	
—	SQR200508A	—	—	2.000	5-8	0.164-0.209	500	
SQR201014A	—	—	—	2.000	10-14	0.083-0.134	350	
SQR201418A	—	—	—	2.000	14-18	0.049-0.083	500	
SQR111206A	SQR111224A	SQR111242A	—	2.000	11-19	0.042-0.120	500	
—	SQR251014A	—	—	2.500	10-14	0.083-0.134	250	
SQR111504A	SQR111542A	—	—	2.500	11-19	0.042-0.120	250	
—	SQR300508A	—	—	3.000	5-8	0.164-0.209	200	
—	SQR301014A	—	—	3.000	10-14	0.083-0.134	200	
SQR111507A	SQR111545A	—	SQR111621A	3.000	8-14	0.083-0.164	200	
SQR3511B	—	—	—	3.500	8-11	0.120-0.164	70	
—	SQR400408A	—	—	4.000	4-8	0.164-0.224	75	
—	SQR400711B	—	—	4.000	7-11	0.120-0.179	70	
—	SQR500711A	—	—	5.000	7-11	0.120-0.179	48	
—	SQR60188A	—	—	6.000	10-14	0.083-0.134	26	

Metric

Black Item No.		Tube OD	Tube Gauge	Wall Thickness	Bulk Pack Qty.
Polished	Textured	in		in	
SQR111197A	SQR111215A	20.00	12-20	0.035-0.109	2500
SQR111198A	SQR111216A	22.00	12-20	0.035-0.109	2500
SQR111199A	SQR111217A	25.00	12-20	0.035-0.109	2500
SQR111502A	SQR111540A	32.00	11-19	0.042-0.120	1500
SQR111203A	SQR111221A	40.00	11-19	0.042-0.120	500
SQR111204A	SQR111222A	45.00	11-19	0.042-0.120	500

Black Item No.		Tube OD	Tube Gauge	Wall Thickness	Bulk Pack Qty.
Polished	Textured	in		in	
SQR111205A	SQR111223A	50.00	11-19	0.042-0.120	500
SQR111207A	SQR111225A	60.00	11-19	0.042-0.120	250
SQR111810A	SQR111811A	60.00	9-14	0.083-0.149	250
SQR111506A	SQR111544A	75.00	8-14	0.083-0.164	200
SQR111209A	SQR111227A	80.00	8-14	0.083-0.164	150
SQR111210A	SQR111228A	100.00	8-14	0.083-0.164	100

LSQR Series Square Ribbed Tube Inserts



Specifications:

- Material: High-Density Polyethylene
- Color: Black with Textured Finish

Features:

- Not recommended for load-bearing applications

Item No.	Tube Size		Tube Gauge	Wall Thickness		Bulk Pack Qty.
	in	mm		in		
LSQR061620A	0.625	15.87	16-20	0.035-0.065	6000	
LSQR071620A	0.750	19.05	16-20	0.035-0.065	4000	
LSQR101420A	1.000	25.40	14-20	0.035-0.083	2000	
LSQR111620A	1.125	28.32	16-20	0.035-0.065	3000	
LSQR121420A	1.250	31.75	14-20	0.035-0.083	1300	



SQUARE INSERT GLIDES

SIG Series Square Load Bearing Glides



Specifications:

- Material: See Table
- Color: See Table

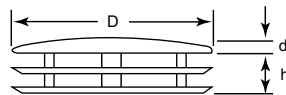
Features:

- Suitable for light and heavy-duty applications
- Step lead provides easy installation
- Press fit assures a secure hold in tubing

Item No.	Tube Size in	Tube Gauge	Material	Wall Thickness in	Color	Bulk Pack Qty.
SIG1100A	0.375	16	ABS	0.065	Black	5000
SIG1105A	0.375	19	ABS	0.042	Black	5000
SIG1108A	0.500	14	ABS	0.083	Black	4000
SIG1110A	0.500	16	ABS	0.065	Black	15000
SIG1115A	0.500	18	ABS	0.049	Black	15000
SIG1120A	0.625	16	ABS	0.065	Black	8000
SIG1125A	0.625	17	ABS	0.058	Black	8000
SIG1130A	0.625	18	ABS	0.049	Black	8000
SIG1135A	0.625	20	ABS	0.035	Black	8000
SIG1140A	0.695	18	ABS	0.049	Black	5000
SIG1145A	0.715	18	ABS	0.049	Black	5000
SIG1150A	0.725	11	ABS	0.120	Black	5000
SIG1155A	0.725	16	ABS	0.065	Black	5000
SIG1160A	0.750	11	ABS	0.120	Black	5800
SIG1165A	0.750	13	ABS	0.095	Black	6000
SIG1170A	0.750	15	ABS	0.072	Black	4000
SIG1175A	0.750	16	ABS	0.065	Black	5500
SIG1180A	0.750	18	ABS	0.049	Black	5500
SIG1185A	0.750	19	ABS	0.042	Black	5500
SIG1190A	0.750	20	ABS	0.035	Black	5500
SIG1200A	0.812	14	ABS	0.083	Black	4500
SIG1205A	0.812	16	ABS	0.065	Black	4500
SIG1210A	0.812	18	ABS	0.049	Black	4500
SIG1215A	0.875	11	ABS	0.120	Black	5000
SIG1220C	0.875	16	ABS	0.065	Black	4000
SIG1225A	0.875	18	ABS	0.049	Black	4000
SIG1235A	1.000	11	ABS	0.120	Black	3200
SIG1240A	1.000	14	ABS	0.083	Black	3000
SIG1244C	1.000	16	Butyrate	0.065	Clear	2800
SIG1245A	1.000	16	ABS	0.065	Black	2800

Item No.	Tube Size in	Tube Gauge	Material	Wall Thickness in	Color	Bulk Pack Qty.
SIG1250A	1.000	17	ABS	0.058	Black	2800
SIG1255A	1.000	18	ABS	0.049	Black	2800
SIG1260A	1.000	20	ABS	0.035	Black	3200
SIG1265A	1.000	22	ABS	0.035	Black	3200
SIG1270A	1.125	16	ABS	0.065	Black	2200
SIG1275A	1.125	18	ABS	0.049	Black	2200
SIG1280A	1.250	11	ABS	0.120	Black	2200
SIG1285A	1.250	12	ABS	0.109	Black	2000
SIG1290A	1.250	14	ABS	0.083	Black	1500
SIG1295A	1.250	16	ABS	0.065	Black	1700
SIG1300A	1.250	18	ABS	0.049	Black	1800
SIG1302B	1.255	19	Butyrate	0.042	Clear	1500
SIG1305A	1.500	10	ABS	0.134	Black	1800
SIG1310A	1.500	11	ABS	0.120	Black	1200
SIG1315A	1.500	12	ABS	0.109	Black	1200
SIG1320C	1.500	14	ABS	0.083	Black	1300
SIG1325A	1.500	16	ABS	0.065	Black	1100
SIG1330A	1.500	18	ABS	0.049	Black	1200
SIG1335A	1.500	20	ABS	0.035	Black	1200
SIG1340A	1.750	11	ABS	0.120	Black	1000
SIG1345A	1.750	14	ABS	0.083	Black	1000
SIG1350A	1.750	16	ABS	0.065	Black	900
SIG1353C	2.000	11	ABS	0.120	Black	1000
SIG1365A	2.000	12	ABS	0.109	Black	1000
SIG1370A	2.000	14	ABS	0.083	Black	1000
SIG1375A	2.000	16	ABS	0.065	Black	1000
SIG1380A	2.000	18	ABS	0.049	Black	1000
SIG1385A	2.500	11	ABS	0.120	Black	500
SIG1390A	3.000	11	ABS	0.120	Black	500

SQP Series Square Ribbed Tube Inserts Chrome Finish



Specifications:

- Material: Low-Density Polyethylene
- Color: Black with High-Polished Metal-Finish Shell

Features:

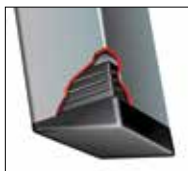
- Polished metallic finish provides enhanced aesthetic appearance
- Horizontal ribbing allows for built-in flexibility to fit multiple tube gauges

Item No.	D		d		h		Wall Thickness		Bulk Pack Qty.
	in	mm	in	mm	in	mm	Tube Gauge (in)	mm	
SQP465341A	0.625	15.88	0.079	2.00	0.354	9.00	14-19 (.040-.080)	1.0 - 2.0	1000
SQP460959A	0.709	18.00	0.079	2.00	0.354	9.00	14-19 (.040-.080)	1.0 - 2.0	1000
SQP465340A	0.750	19.05	0.079	2.00	0.394	10.00	14-19 (.040-.080)	1.0 - 2.0	1000
SQP465343A	1.000	25.40	0.079	2.00	0.394	10.00	14-19 (.040-.080)	1.0 - 2.0	1000
SQP465342A	1.181	30.00	0.118	3.00	0.394	10.00	14-19 (.040-.080)	1.0 - 2.0	1000
SQP460964A	1.375	35.00	0.118	3.00	0.472	12.00	14-19 (.040-.080)	1.0 - 2.0	1000
SQP465344A	1.575	40.00	0.118	3.00	0.472	12.00	14-19 (.040-.080)	1.0 - 2.0	1000

SQUARE INSERT GLIDES



AFSQ Series Square Angled Tube Inserts



Specifications:

- Material: Low-Density Polyethylene
- Color: Black

Features:

- These angled feet are ideal for stacking chairs, children's play equipment and step ladders

Item No.	Tube Size		Tube Gauge	Wall Thickness		Bulk Pack Qty.
	in	mm		in	Degree	
AFSQ07161805A*	0.750	19.05	16-18	0.049-0.065	5°	2500
AFSQ07161825A*	0.750	19.05	16-18	0.049-0.065	25°	2500
AFSQ10162015A	1.000	25.40	16-20	0.035-0.065	15°	1000

* Has a built-in bumper

SRG Series Square Domed Tube Glides



Specifications:

- Material: ABS
- Color: Black

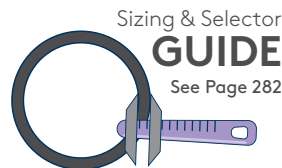
Features:

- Ideal for applications with variable leg angles
- Square rocker glides fit flush with tubing outer dimensions for a clean, finished look

Item No.	Tube Size		Wall Thickness	Bulk Pack Qty.
	in	Tube Gauge	in	
SRG1010A	0.750	16	0.065	4000
SRG1020A	0.750	18	0.049	4000
SRG1030A	0.813	16	0.065	3000
SRG1115A	0.813	17	0.058	4000
SRG1120A	0.813	18	0.049	700
SRG1045A	0.875	16	0.065	3000
SRG1055A	0.875	18	0.049	2700

Item No.	Tube Size		Wall Thickness	Bulk Pack Qty.
	in	Tube Gauge	in	
SRG1075A	0.940	18	0.049	2700
SRG1080A	1.000	16	0.065	2000
SRG1100A	1.000	18	0.049	2000
SRG1125A	1.250	16	0.065	1100
SRG1135A	1.250	18	0.049	1100
SRG1145A	1.500	18	0.049	1000

DFSQ Series Square Domed Tube Inserts



Sizing & Selector

GUIDE

See Page 282

Specifications:

- Material: Low-Density Polyethylene
- Color: Black

Features:

- Can accommodate any degree of leg angle, while the horizontal ribbed design has built-in flexibility to fit multiple tube gauge sizes

Item No.	Tube Size		Tube Gauge	Bulk Pack Qty.
	in	mm		
DFSQ111525A	0.787	20.00	18-25	2500
DFSQ081620A	0.875	22.22	16-20	1750
DFSQ101620A	1.000	25.40	16-20	1250



LOCAL STOCK



SAME DAY SHIPPING



SHOP OVER 35,000 PRODUCTS ONLINE



THREADED INSERT GLIDES

STI Series Square Plastic Threaded Inserts



Specifications:

- Material: Nylon
- Color: See Table

Features:

- Can be used with either adjustable feet or tilt glides

Item No.	Color	Ø Tube in	Tube Gauge	Thread Size	Bulk Pack Qty.
STI1200B	Black	0.750	16	1/4 - 20	5000
STI1215A	Natural	0.875	16	1/4 - 20	1900
STI1215B	Black	0.875	16	1/4 - 20	1900
STI1220A	Natural	1.000	16	1/4 - 20	3000
STI1240A	Natural	1.000	18	1/4 - 20	2700
STI1260A	Natural	1.000	18	5/16 - 18	2700
STI1260B	Black	1.000	18	5/16 - 18	2700
STI1270A	Natural	1.250	16	5/16 - 18	1800

TAS Series Square Threaded All Metal Inserts



Specifications:

- Material: Steel with Zinc Plated Finish

Features:

- Metal ribs lock onto inside of square tube

Imperial

Item No.	Fits Tube		Fits Tube Gauge	Bulk Pack Qty.
	in	Thread		
TAS240A	1	5/16 - 18	16 - 18	1000
TAS260A	1 - 1/4	5/16 - 18	16 - 18	500
TAS460A	1 - 1/4	3/8 - 16	16 - 18	500
TAS270A	1 - 1/2	5/16 - 18	16 - 18	500
TAS470A	1 - 1/2	3/8 - 16	16 - 18	500

Metric

Item No.	Fits Tube		Thread Size	Tube Gauge mm	Std Pack Qty.
	mm	mm			
499465	19	M6	1.0	200	
499466	22	M6	1.0	200	
499467	25	M6	1.0	200	
551845	25	M8	1.2	200	
499470	32	M8	1.2	200	
499471	38	M8	1.2	200	
551842	22	M10	1.5	200	
551843	25	M10	1.5	200	
499473	32	M10	1.5	200	
499474	38	M10	1.5	200	

SQM Series Square Metal Threaded Inserts

Specifications:

- Material: High-Density Polyethylene with Zinc-Plated Steel-Threaded Insert
- Color: Black

Features:

- Tube inserts with internal threads to accommodate adjustable leveling mounts and feet
- Ribbed to accommodate multiple gauges

Imperial

Item No.	Tube Size	Thread Size	Tube Gauge	Wall Thickness	Bulk Pack Qty.
				in	
SQM0150A	0.750	1/4 - 20	16 - 18	0.049 - 0.065	1000
SQM0200A	0.875	1/4 - 20	16 - 18	0.049 - 0.065	1000
SQM0300A	1.000	1/4 - 20	16 - 18	0.049 - 0.065	1000
SQM0350A	1.000	5/16 - 18	16 - 18	0.049 - 0.065	1000
SQM0400A	1.000	1/4 - 20	12 - 14	0.083 - 0.109	1000
SQM0450A	1.000	5/16 - 18	12 - 14	0.083 - 0.109	1000
SQM0500A	1.000	1/4 - 20	10 - 11	0.120 - 0.134	1000
SQM0550A	1.000	5/16 - 18	10 - 11	0.120 - 0.134	1000
SQM0600A	1.250	5/16 - 18	16 - 18	0.049 - 0.065	500
SQM0650A	1.250	3/8 - 16	16 - 18	0.049 - 0.065	500
SQM0700A	1.250	5/16 - 18	12 - 14	0.083 - 0.109	500
SQM0750A	1.250	3/8 - 16	12 - 14	0.083 - 0.109	500
SQM0800A	1.250	5/16 - 18	10 - 11	0.120 - 0.134	500
SQM0850A	1.250	3/8 - 16	10 - 11	0.120 - 0.134	500
SQM0900A	1.375	3/8 - 16	16 - 18	0.049 - 0.065	500
SQM1000A	1.500	3/8 - 16	16 - 18	0.049 - 0.065	500



Metric

Item No.	Tube Size	Thread Size	Tube Gauge	Wall Thickness	Bulk Pack Qty.
	mm	mm	mm	mm	
498583	19	M6	17 - 19	1.1 - 1.5	1000
498584	20	M6	17 - 19	1.1 - 1.5	1000
498585	20	M8	17 - 19	1.1 - 1.5	1000
498586	25	M6	17 - 19	1.1 - 1.5	500
498587	25	M8	17 - 19	1.1 - 1.5	500
498588	30	M8	17 - 19	1.1 - 1.5	1000
498589	30	M10	17 - 19	1.1 - 1.5	250
498590	35	M8	17 - 19	1.1 - 1.5	500
498591	35	M10	17 - 19	1.1 - 1.5	500
498592	40	M8	17 - 19	1.1 - 1.5	200
498593	40	M10	17 - 19	1.1 - 1.5	500
498594	40	M12	17 - 19	1.1 - 1.5	500
498595	50	M8	17 - 19	1.1 - 1.5	100
498596	50	M10	17 - 19	1.1 - 1.5	250
498597	50	M12	17 - 19	1.1 - 1.5	250

HEAVY DUTY THREADED INSERT GLIDES



SQH Series Square Heavy Duty Threaded Inserts



Specifications:

- Material: Glass-Filled Nylon with Brass Threaded Insert
- Color: Black

Features:

- Threaded brass insert for indoor and outdoor use
- High load rating is ideal for machinery use

Imperial

Item No.	Tube Size in	Thread Size	Tube Gauge	Wall Thickness in	Max Static Load lbs	Bulk Pack Qty.
SQH0100A	1.5	3/8-16	16	0.065	1350	48
SQH0150A	1.5	1/2-13	16	0.065	1350	48
SQH0200A	1.5	5/8-11	16	0.065	1350	48
SQH0250A	1.5	3/4-10	16	0.065	1800	48
SQH0300A	1.5	3/8-16	11	0.12	1350	48
SQH0350A	1.5	1/2-13	11	0.12	1350	48
SQH0400A	1.5	5/8-11	11	0.12	1350	48
SQH0450A	1.5	3/4-10	11	0.12	1800	48
SQH0500A	2	3/8-16	16	0.065	1350	24
SQH0550A	2	1/2-13	16	0.065	1350	24
SQH0600A	2	5/8-11	16	0.065	1350	24
SQH0650A	2	3/4-10	16	0.065	2000	24
SQH0700A	2	3/8-16	12	0.109	1350	24
SQH0750A	2	1/2-13	12	0.109	1350	24
SQH0800A	2	5/8-11	12	0.109	1350	24
SQH0850A	2	3/4-10	12	0.109	2000	24

Metric

Item No.	Tube Size mm	Thread Size mm	Tube Gauge mm	Max Static Load N	Bulk Pack Qty.
1286358	30	M10	1.5	4500	48
1286359	30	M12	1.5	4500	48
1286360	30	M16	1.5	4500	48
1286361	40	M10	1.5	6000	48
1286362	40	M12	1.5	6000	48
1286363	40	M16	1.5	6000	48
1286364	40	M20	1.5	8000	48
1286365	40	M10	2	6000	48
1286366	40	M12	2	6000	48
1286367	40	M16	2	6000	48
1286368	40	M20	2	8000	48
1286369	50	M12	1.5	6000	24
1286370	50	M16	1.5	6000	24
1286371	50	M20	1.5	8500	24
1286372	50	M12	2	6000	24
1286373	50	M16	2	6000	24
1286374	50	M20	2	8500	24

TRY BEFORE YOU BUY!

Thousands of options for feet, casters and glides available from Essentra.

Order your **FREE** samples today.

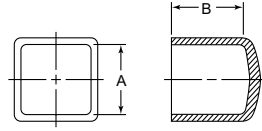
Complete your project with levels, bumpers, casters and vibration mounts from Essentra.

Shop our complete line at www.essentracomponents.com



SQUARE AND ANGLE IRON CAPS

DMSQ Series Square Vinyl End Caps



Specifications:

- Material: PVC
- Color: See Table

Features:

- Designed to fit the most popular sizes of square tubular steel
- Material flexibility will stretch to fit normal tube diameter tolerance variations
- Glossy and attractive finish makes this part ideal for use as a decorative end cap



Black Item No.	Bulk Pack Qty.	Black Item No.	Bulk Pack Qty.	White Item No.	Bulk Pack Qty.	A	
1/2" Length (B)		1" Length (B)		1" Length (B)		in	mm
DMSQ0250-1/2A	5000	DMSQ0250-1A	6500	—	—	0.250	6.35
DMSQ0312-1/2A	5000	DMSQ0312-1A	5000	—	—	0.312	7.92
DMSQ0375-1/2A	5000	DMSQ0375-1A	5000	—	—	0.375	9.52
DMSQ0437-1/2A	5000	DMSQ0437-1A	5000	—	—	0.437	11.09
DMSQ0500-1/2A	5000	DMSQ0500-1A	4000	—	—	0.500	12.70
DMSQ0625-1/2A	3500	DMSQ0625-1A	2000	—	—	0.625	15.87
DMSQ0750-1/2A	3500	DMSQ0750-1A	2000	DMSQ0750-1C	2000	0.750	19.05
DMSQ1000-1/2A	2000	DMSQ1000-1A	1500	DMSQ1000-1C	1500	1.000	25.40
DMSQ1250-1/2A	2000	DMSQ1250-1A	1000	—	—	1.250	31.75
DMSQ1500-1/2A	1500	DMSQ1500-1A	500	—	—	1.500	38.10
DMSQ2000-1/2A	500	DMSQ2000-1A	325	—	—	2.000	50.80

SQC Series Square Heavy Duty End Caps



Specifications:

- Material: See Table
- Color: Black

Features:

- End cap style design fits most popular sizes of square tubular steel



Item No.	Tube Size		Material	Bulk Pack Qty.
	in	mm		
SQC0500A	0.500	12.70	LDPE	5000
SQC1000A	1.000	25.40	ABS	1700
SQC1250A	1.250	31.75	LDPE	1200
SQC3000A	3.000	76.20	LDPE	100

AIC Series Angle Iron Caps

Specifications:

- Material: Low-Density Polyethylene
- Color: Black

Features:

- Angle iron caps are an affordable answer to the problem of protecting floors from the sharp edges of angle iron furniture
- Angle iron caps are also used as caps on metal bed frames and shelves and will not rust while also eliminating the cost of welding steel closures



Item No.	Leg Length		Leg Gauge		Bulk Pack Qty.
	in	mm	in	mm	
AIC1000A	1.000	25.40	0.125	3.18	2200
AIC1125A	1.250	31.74	0.125	3.18	1400
AIC1128A	1.500	38.10	0.125	3.18	1000
AIC2000A	1.290	32.78	0.125	3.18	600

ROUND TUBE INSERT GLIDES



RDR Series Round Multi-Gauge Ribbed Tube Inserts

Specifications:

- Material: Low-Density Polyethylene
- Surface Finish: See Table
- Color: See Table

Features:

- Ideal for aesthetic or light-duty load bearing applications
- Perimeter rib design allows for easy assembly and a secure fit
- Used on a wide range of furniture and metal tubing applications



See page 282 for Sizing and Selector Guide.

Imperial

Black Item No.		White Item No.		Tube OD		Bulk Pack Qty.
Polished	Textured	Polished	Textured	in	Tube Gauge	
RDR111033A	RDR111053A	RDR111073A	—	0.500	16 - 20	2500
RDR111036A	RDR111056A	RDR111076A	—	0.750	14 - 20	1500
—	RDR081012A	—	RDR081012D	0.875	10 - 12	5000
RDR081420D	—	RDR111078A	—	0.875	14 - 20	5000
—	RDR101111A	—	—	1.000	10 - 12	2000
RDR101420D	RDR101420F	—	—	1.000	14 - 20	4000
RDR111040A	RDR111060A	RDR111080A	—	1.000	11 - 19	1000
RDR111042A	RDR111062A	RDR111082A	—	1.125	11 - 19	1000
RDR121014B	—	—	—	1.250	10 - 14	2500
RDR111044A	RDR111064A	RDR111084A	—	1.250	11 - 19	1000
RDR131418A	—	—	—	1.375	14 - 18	1200
RDR111492A	RDR111530A	—	—	1.375	11 - 19	1500
RDR150812A	—	—	—	1.500	8 - 12	1500
—	RDR151012A	—	—	1.500	10 - 12	1500
RDR111046A	RDR111066A	—	—	1.500	11 - 19	1000
RDR111495A	RDR111533A	RDR111571A	RDR111609A	1.625	11 - 19	1000
—	RDR171012A	—	—	1.750	10 - 12	1000
RDR111497A	RDR111535A	—	RDR111611A	1.750	11 - 19	1000
RDR111498A	RDR111536A	—	RDR111612A	1.875	11 - 19	800
RDR201014A	—	—	—	2.000	10 - 14	500
—	RDR201420A	—	—	2.000	14 - 18	500
RDR111049A	RDR111069A	RDR111089A	—	2.000	11 - 19	500
RDR230508B	RDR230508A	—	—	2.375	5 - 8	400
—	RDR231014A	—	—	2.375	10 - 14	400
—	RDR250812A	—	—	2.500	8 - 12	400
RDR111500A	RDR111538A	—	RDR111614A	2.500	11 - 19	250
RDR460674A	RDR465601A	—	—	2.750	8 - 14	500
—	RDR280407A	—	—	2.875	4 - 7	300
—	RDR300812A	—	—	3.000	8 - 12	250
—	RDR301418A	—	—	3.000	14 - 18	250
RDR111052A	RDR111072A	RDR111092A	—	3.000	8 - 14	250
RDR400511A	—	—	—	4.000	5 - 11	150
RDR450711A	—	—	—	4.500	7 - 11	100

Metric

Black Item No.		White Item No.	Tube OD	Tube Gauge	Bulk Pack Qty.
Polished	Textured	Textured	mm		
—	RDR111527A	—	10.00	11 - 19	2500
RDR111490A	RDR111528A	RDR111603A	12.00	14 - 20	2500
RDR111034A	—	—	13.00	14 - 20	2500
—	RDR460660A	—	15.00	14 - 20	2500
RDR111035A	RDR111055A	—	16.00	14 - 20	5000
RDR111037A	RDR111057A	—	20.00	14 - 20	1500
RDR111038A	RDR111058A	—	22.00	14 - 20	1500
RDR111043A	RDR111063A	—	30.00	11 - 19	1000

Black Item No.		White Item No.	Tube OD	Tube Gauge	Bulk Pack Qty.
Polished	Textured	Textured	mm		
RDR111044A	RDR111064A	RDR111084A	32.00	11 - 19	1000
RDR111794A	RDR111795A	—	32.00	11 - 14	1000
—	RDR111067A	—	40.00	11 - 19	1000
RDR111494A	RDR111532A	—	42.00	11 - 19	1000
RDR111496A	—	RDR111610A	45.00	11 - 19	1000
—	RDR465600A	—	55.00	11 - 19	600
RDR111050A	RDR111070A	—	60.00	11 - 19	400
—	RDR465596A	—	105.00	7 - 14	75

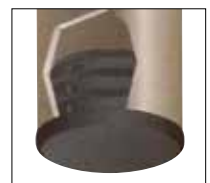
LRDR Series Round Ribbed Tube Inserts

Specifications:

- Material: High-Density Polyethylene
- Color: Black with Matte Finish

Features:

- Designed for light load-bearing applications or cosmetic finishing



Item No.	Tube OD		Tube Gauge	Wall Thickness	Bulk Pack Qty.
	in	mm		in	
LRDR071620A	0.750	19.05	16 - 20	0.035 - 0.065	5500
LRDR081420A	0.875	22.22	14 - 20	0.035 - 0.083	3500
LRDR101420A	1.000	25.40	14 - 20	0.035 - 0.083	2800

Item No.	Tube OD		Tube Gauge	Wall Thickness	Bulk Pack Qty.
	in	mm		in	
LRDR111418A	1.125	28.57	14 - 18	0.035 - 0.083	2200
LRDR121620A	1.250	31.75	16 - 20	0.035 - 0.065	1500



ROUND TUBE INSERT GLIDES

RDG Series Round Load Bearing Glides



Specifications:

- Material: See Table
- Color: Black

Features:

- Glides are designed for use as a glide or plug style closure
- A reduced diameter step-lead is provided for easy positioning and insertion
- Ideal for moderate to heavy-duty applications

Item No.	Tube OD		Wall Thickness	Material	Bulk Pack Qty.
	in	Tube Gauge			
RDG1100A	0.375	19	0.042	ABS	9000
RDG1105A	0.500	16	0.065	ABS	10000
RDG1110A	0.500	18	0.049	ABS	15000
RDG1115A	0.500	20	0.035	ABS	15000
RDG1120A	0.500	21	0.032	ABS	15000
RDG1125A	0.500	22	0.028	ABS	13000
RDG1127A	0.563	19	0.042	HDPE	10000
RDG1130A	0.563	20	0.035	ABS	13000
RDG1135A	0.563	22	0.028	ABS	6500
RDG1140A	0.625	11	0.120	ABS	13000
RDG1145A	0.625	12	0.109	ABS	13000
RDG1150A	0.625	13	0.095	ABS	15000
RDG1155D	0.625	14	0.083	ABS	3000
RDG1160A	0.625	15	0.072	ABS	7000
RDG1165A	0.625	16	0.065	ABS	7000
RDG1168B	0.625	17	0.058	Butyrate	10000
RDG1170A	0.625	17	0.058	ABS	8000
RDG1175A	0.625	18	0.049	ABS	8000
RDG1180A	0.625	20	0.035	ABS	5000
RDG1185A	0.625	22	0.028	ABS	8000
RDG1190A	0.750	13	0.095	ABS	6500
RDG1195C	0.750	14	0.083	ABS	1500
RDG1200A	0.750	16	0.065	ABS	7000
RDG1205A	0.750	17	0.058	ABS	8000
RDG1210A	0.750	18	0.049	ABS	7000
RDG1215A	0.750	19	0.042	ABS	6500
RDG1220A	0.750	20	0.035	ABS	6500
RDG1225A	0.750	22	0.028	ABS	3000
RDG1228B	0.875	13	0.095	LDPE	4500
RDG1230A	0.875	14	0.083	ABS	5000
RDG1235A	0.875	16	0.065	ABS	5000
RDG1237B	0.875	17	0.058	Nylon	5000
RDG1240A	0.875	18	0.049	ABS	4500
RDG1245A	0.875	19	0.042	ABS	5000
RDG1250A	0.875	20	0.035	ABS	45000
RDG1255A	1.000	12	0.109	ABS	4000
RDG1264B	1.000	14	0.083	Butyrate	4000
RDG1265A	1.000	14	0.083	ABS	4000
RDG1270A	1.000	15	0.072	ABS	4000
RDG1273B	1.000	16	0.065	Butyrate	4000
RDG1274D	1.000	16	0.065	Nylon	3500

Item No.	Tube OD		Wall Thickness	Material	Bulk Pack Qty.
	in	Tube Gauge			
RDG1275A	1.000	16	0.065	ABS	4000
RDG1280A	1.000	17	0.058	ABS	3500
RDG1285A	1.000	18	0.049	ABS	3500
RDG1290A	1.000	19	0.042	ABS	3500
RDG1295C	1.000	20	0.035	ABS	3500
RDG1305C	1.125	12	0.109	ABS	2500
RDG1310A	1.125	14	0.083	ABS	2800
RDG1315A	1.125	16	0.065	ABS	2800
RDG1320B	1.125	18	0.049	ABS	2800
RDG1325A	1.125	19	0.042	ABS	2800
RDG1327B	1.130	20	0.035	LDPE	2400
RDG1330A	1.250	11	0.120	ABS	2500
RDG1335C	1.250	12	0.109	ABS	2500
RDG1340A	1.250	14	0.083	ABS	2300
RDG1345A	1.250	16	0.065	ABS	2300
RDG1350D	1.250	18	0.049	ABS	2300
RDG1355A	1.375	13	0.095	ABS	1100
RDG1360A	1.375	14	0.083	ABS	2000
RDG1365A	1.375	16	0.065	ABS	2000
RDG1370C	1.375	18	0.049	ABS	2000
RDG1375A	1.375	20	0.035	ABS	1600
RDG1380A	1.500	12	0.109	ABS	1200
RDG1385A	1.500	14	0.083	ABS	1500
RDG1390A	1.500	16	0.065	ABS	1500
RDG1394B	1.500	18	0.049	Butyrate	1400
RDG1395D	1.500	18	0.049	ABS	1500
RDG1400A	1.500	19	0.042	ABS	1500
RDG1405A	1.500	20	0.035	ABS	1500
RDG1408B	1.625	16	0.065	Nylon	1400
RDG1410A	1.625	18	0.049	ABS	1000
RDG1415A	1.750	11	0.120	ABS	1100
RDG1420A	1.750	14	0.083	ABS	1100
RDG1425A	1.750	16	0.065	ABS	1100
RDG1430A	1.750	18	0.049	ABS	1100
RDG1435A	1.750	20	0.035	ABS	1000
RDG1445A	2.000	11	0.120	ABS	850
RDG1455A	2.000	16	0.065	ABS	850
RDG1460A	2.000	18	0.049	ABS	850
RDG1465A	2.000	20	0.035	ABS	1000
RDG1470A	2.500	18	0.049	ABS	500
RDG1475A	3.000	13	0.095	ABS	500

RLI Series Round Low Profile Insert Glides

Specifications:

- Material: Low-Density Polyethylene
- Color: Black

Features:

- Lightweight insert glides present a low-cost option for neatly finishing steel tubes



Item No.	Tube OD		Tube Gauge	Wall Thickness	Bulk Pack Qty.
	in	mm			
RLI0516A	0.500	12.70	16	0.065	10000
RLI0518A	0.500	12.70	18	0.049	10000
RLI0520A	0.500	12.70	20	0.035	10000
RLI0616A	0.625	15.87	16	0.065	10000
RLI0618A	0.625	15.87	18	0.049	10000
RLI0716A	0.750	19.05	16	0.065	5000
RLI0718A	0.750	19.05	18	0.049	5000
RLI0816A	0.875	22.22	16	0.065	5000
RLI0818A	0.875	22.22	18	0.049	5000
RLI1016A	1.000	25.40	16	0.065	5000

Item No.	Tube OD		Tube Gauge	Wall Thickness	Bulk Pack Qty.
	in	mm			
RLI1018A	1.000	25.40	18	0.049	5000
RLI1116A	1.125	28.57	16	0.065	4000
RLI1118A	1.125	28.57	18	0.049	4000
RLI1216A	1.250	31.75	16	0.065	2500
RLI1218A	1.250	31.75	18	0.049	2500
RLI1516A	1.500	38.10	16	0.065	2000
RLI1518A	1.500	38.10	18	0.049	2000
RLI1716A	1.750	44.45	16	0.065	1500
RLI1718A	1.750	44.45	18	0.049	1500
RLI2018A	2.000	50.80	18	0.049	800

ROUND TUBE INSERT GLIDES



Round Metric Low Profile Insert Glides

Specifications:

- Material: Low-Density Polyethylene
- Color: Black

Features:

- Low profile design allows for a finishing component with limited space



Item No.	Tube OD		Wall Thickness	Bulk Pack Qty.
	mm	Tube Gauge	mm	
466562	10	16 - 20	0.80 - 1.50	5000
466563	12	14 - 16	1.50 - 2.00	5000
RDR466565A	15	16 - 20	0.80 - 2.00	2000
466568	19	16 - 20	0.80 - 2.00	2000
466569	20	13 - 20	0.80 - 2.50	2000
466570	22	13 - 20	1.00 - 2.50	2000
466571	24	13 - 20	1.00 - 2.50	2000
466572	25	13 - 20	1.00 - 2.50	3500
466573	28	13 - 20	0.80 - 2.50	3000
466574	30	13 - 20	0.80 - 2.50	2500

Item No.	Tube OD		Wall Thickness	Bulk Pack Qty.
	mm	Tube Gauge	mm	
466575	32	13 - 20	0.80 - 2.50	2250
466576	35	11 - 19	1.00 - 3.00	1750
466577	38	11 - 19	1.00 - 3.00	1500
466578	40	11 - 19	1.00 - 3.00	1500
460789	42	13 - 20	0.80 - 2.50	1250
466579	45	11 - 19	1.00 - 3.00	1000
466580	50	13 - 20	1.00 - 2.50	800
466581	55	11 - 19	1.00 - 3.00	700
466582	60	11 - 16	1.50 - 3.00	500

GSB & GFB Series Round Ribbed Inserts Felt and Steel Based



Specifications:

- Insert Material: Nylon
- Base Material: See Table
- Color: Black

Felt	Steel
Wood and other soft surfaces	Smooth surfaces

GFB Series

GSB Series

Item No.	Bulk Pack Qty.	Item No.	Bulk Pack Qty.	D		h		L = Fits	
				in	mm	in	mm	Wall (in)	Gauge
GFB465536A	1750	GSB465537A	2000	0.787	20.00	0.748	19.00	0.060 - 0.090	14 - 17
—	2500	GSB465539A	1750	0.866	22.00	0.748	19.00	0.060 - 0.090	14 - 17
GFB465540A	2250	GSB465541A	1250	0.984	25.00	0.748	19.00	0.060 - 0.090	14 - 17
GFB465542A	1500	GSB465543A	1000	1.102	28.00	0.748	19.00	0.060 - 0.090	14 - 17
GFB465544A	1250	GSB465545A	900	1.181	30.00	0.748	19.00	0.060 - 0.090	14 - 17
GFB465546A	1250	GSB465547A	800	1.260	32.00	0.748	19.00	0.060 - 0.090	14 - 17

TSNB, TSFB & TSSB SERIES Round Ribbed Inserts Nylon, Felt & Steel Based

Nylon	Felt	Steel
Hard surfaces	Wood and other soft surfaces	Smooth surfaces



TSNB Series

TSSB Series

TSFB Series

Item No.	Bulk Pack Qty.	Item No.	Bulk Pack Qty.	Item No.	Bulk Pack Qty.	D		d		h		L	
						in	mm	in	mm	in	mm	Wall Thickness in	Tube Gauge
TSNB Series Nylon Based		TSFB Series Felt Based		TSSB Series Steel Based									
—	1250	TSFB465548A	1500	TSSB465549A	1250	0.984	25.00	0.748	19.00	0.965	24.50	0.060 - 0.090	14 - 17
TSNB465553A	1000	TSFB465551A	1250	TSSB465552A	1250	0.984	25.00	0.787	20.00	0.965	24.50	0.060 - 0.090	14 - 17
TSNB465556A	1000	TSFB465554A	1000	TSSB465555A	1000	0.984	25.00	0.866	22.00	0.965	24.50	0.060 - 0.090	14 - 17
—	800	TSFB465557A	800	TSSB465558A	1000	0.984	25.00	0.984	25.00	0.965	24.50	0.060 - 0.090	14 - 17
TSNB465562A	800	TSFB465560A	800	TSSB465561A	1250	0.984	25.00	1.102	28.00	0.965	24.50	0.060 - 0.090	14 - 17
TSNB465565A	1000	TSFB465563A	625	TSSB465564A	625	1.181	30.00	0.748	19.00	0.965	24.50	0.060 - 0.090	14 - 17
TSNB465568A	1000	TSFB465566A	500	TSSB465567A	500	1.181	30.00	0.787	20.00	0.965	24.50	0.060 - 0.090	14 - 17
TSNB465571A	800	TSFB465570A	400	TSSB465569A	400	1.181	30.00	0.866	22.00	0.965	24.50	0.060 - 0.090	14 - 17
TSNB465574A	800	—	—	TSSB465572A	400	1.181	30.00	0.984	25.00	0.965	24.50	0.060 - 0.090	14 - 17
TSNB465577A	800	TSFB465575A	350	TSSB465576A	375	1.181	30.00	1.102	28.00	0.965	24.50	0.060 - 0.090	14 - 17



ROUND TUBE INSERT GLIDES

BI & LBI Series Round Domed Tube Glides



Specifications:

- Material: See Table
- Color: Black

Features:

- Provides a neat finish for steel tubing

Item No.	Material	Tube OD		Tube Gauge	Wall Thickness		Bulk Pack Qty.
		in	mm		in	mm	
BI1000A	ABS	0.625	15.88	18	0.049	10000	
BI1100A	ABS	0.750	19.05	15	0.072	3000	
LBI1130A	LDPE	0.750	19.05	16	0.065	5500	
LBI1132A	LDPE	0.750	19.05	16	0.065	5500	
BI1110A	ABS	0.875	22.23	14	0.083	3500	
LBI1140A	LDPE	0.875	22.23	14	0.083	3500	
BI1120A	ABS	0.875	22.23	16	0.065	3500	
BI1130A	ABS	0.875	22.23	20	0.035	4000	
BI1140A	ABS	1.000	25.40	14	0.083	2700	
BI1150A	ABS	1.000	25.40	16	0.065	2500	
LBI1180A	LDPE	1.000	25.40	16	0.065	3000	
BI1160A	ABS	1.000	25.40	18	0.049	2500	

Item No.	Material	Tube OD		Tube Gauge	Wall Thickness		Bulk Pack Qty.
		in	mm		in	mm	
LBI1190A	LDPE	1.000	25.40	18	0.049	3100	
BI1170A	ABS	1.000	25.40	20	0.035	2600	
BI1180A	ABS	1.125	28.58	12	0.109	2000	
BI1200A	ABS	1.125	28.58	16	0.065	2500	
BI1210A	ABS	1.125	28.58	18	0.049	1600	
BI1220A	ABS	1.228	31.19	14	0.083	1600	
BI1230A	ABS	1.250	31.75	16	0.065	1500	
BI1240A	ABS	1.375	34.93	14	0.083	1200	
BI1250A	ABS	1.500	38.10	11	0.120	1000	
BI1260A*	ABS	1.500	38.10	14	0.083	1000	
BI1270A	ABS	1.500	38.10	16	0.065	1000	

* This part has a textured (not polished) finish

DFRD Series Round Domed Tube Inserts



Specifications:

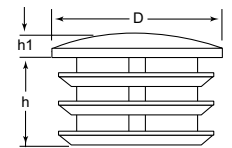
- Material: Low-Density Polyethylene
- Color: Black

Features:

- Can accommodate any degree of leg angle, while the horizontal ribbed design has built-in flexibility to fit multiple tube gauge sizes

Item No.	Tube OD		Tube Gauge	Wall Thickness		Bulk Pack Qty.
	in	mm		in	mm	
DFRD111522A	0.875	22.22	14 - 20	0.035 - 0.083	2000	
DFRD121620A	1.250	31.75	14 - 18	0.049 - 0.083	2000	

RDP Series Round Ribbed Tube Inserts Chrome Finish



Item No.	D		h		h1		Wall Thickness		Bulk Pack Qty.
	in	mm	in	mm	in	mm	Tube Gauge (in)	mm	
RDP465335A	0.512	13.00	0.315	8.00	0.079	2.00	14-19 (.040-.080)	1.0-2.0	1000
RDP463586A	0.630	16.00	0.394	10.00	0.079	2.00	14-19 (.040-.080)	1.0-2.0	2000
RDP465333A	0.709	18.00	0.394	10.00	0.079	2.00	14-19 (.040-.080)	1.0-2.0	2000
RDP465336A	0.750	19.05	0.394	10.00	0.079	2.00	14-19 (.040-.080)	1.0-2.0	1000
RDP465338A	0.787	20.00	0.394	10.00	0.118	3.00	14-19 (.040-.080)	1.0-2.0	3000
RDP465334A	0.866	22.00	0.433	11.00	0.118	3.00	14-19 (.040-.080)	1.0-2.0	3000
RDP462994A	0.984	25.00	0.591	15.00	0.118	3.00	14-19 (.040-.080)	1.0-2.0	2000
RDP463587A	1.102	28.00	0.591	15.00	0.118	3.00	14-19 (.040-.080)	1.0-2.0	500
RDP463020A	1.181	30.00	0.630	16.00	0.118	3.00	14-19 (.040-.080)	1.0-2.0	500
RDP463588A	1.260	32.00	0.630	16.00	0.118	3.00	14-19 (.040-.080)	1.0-2.0	250
RDP463021A	1.378	35.00	0.630	16.00	0.118	3.00	14-19 (.040-.080)	1.0-2.0	500
RDP465337A	1.496	38.00	0.630	16.00	0.118	3.00	14-19 (.040-.080)	1.0-2.0	250
RDP463022A	1.575	40.00	0.630	16.00	0.118	3.00	14-19 (.040-.080)	1.0-2.0	250
RDP465339A	1.772	45.00	0.630	16.00	0.118	3.00	14-19 (.040-.080)	1.0-2.0	250
RDP463023A	1.969	50.00	0.472	12.00	0.118	3.00	16-17 (.065 - 0.058)	1.50	200
RDP465332A	2.362	60.00	0.472	12.00	0.118	3.00	16-17 (.065 - 0.058)	1.50	200

Specifications:

- Material: Low-Density Polyethylene
- Color: Black with High-Polished Metal-Finish Shell

Features:

- Polished metallic finish provides enhanced aesthetic appearance
- Horizontal ribbing allows for built-in flexibility to fit multiple tube gauges

ROUND THREADED INSERT GLIDES



TAR Series Round Threaded All Metal Inserts

Specifications:

- Material: Steel with Zinc plated finish

Features:

- Metal ribs lock onto inside of round tube



Imperial

Item No.	Tube OD		Thread Size	Tube Gauge	Bulk Pack Qty.
	in				
TAR010A	5/8		1/4 - 20	16 - 18	1000
TAR020A	3/4		1/4 - 20	16 - 18	1000
TAR030A	7/8		1/4 - 20	16 - 18	1000
TAR230A	7/8		5/16 - 18	16 - 18	1000
TAR040A	1		1/4 - 20	16 - 18	1000
TAR240A	1		5/16 - 18	16 - 18	1000
TAR260A	1-1/4		5/16 - 18	16 - 18	500
TAR460A	1-1/4		3/8 - 16	16 - 18	500
TAR270A	1-1/2		5/16 - 18	16 - 18	500
TAR470A	1-1/2		3/8 - 16	16 - 18	500

Metric

Item No.	Tube OD		Thread Size	Tube Gauge		Bulk Pack Qty.
	mm			mm		
499455	19		M6	1		200
499456	22		M6	1		200
499457	25		M6	1		200
551836	51		M6	1.2		200
499458	25		M8	1.2		200
499460	32		M8	1.2		200
499461	38		M8	1.2		200
551837	51		M8	1.2		200
551838	25		M10	1.2		200
499463	32		M10	1.5		200
499464	38		M10	1.5		200
551839	51		M10	1.5		200

LRT & RTI Series Round Plastic Threaded Inserts

Specifications:

- Material: See Table
- Color: See Table

Features:

- Accommodates adjustable leveling mounts and feet



Item No.	Color	Material	Tube OD		Tube Gauge	Thread Size	Bulk Pack Qty.
			in				
LRT1100A	Natural	HDPE	0.625		18	1/4 - 20	4200
LRT1100B	Black	HDPE	0.625		18	1/4 - 20	4200
RTI1100A	Natural	Nylon	0.750		17	1/4 - 20	4000
RTI1100B	Black	Nylon	0.750		17	1/4 - 20	4000
LRT1110A	Natural	HDPE	0.750		18	1/4 - 20	4000
LRT1120A	Natural	HDPE	0.875		18	1/4 - 20	3800
LRT1130A	Natural	HDPE	1.000		16	1/4 - 20	3500
RTI1210A	Natural	Nylon	1.000		16	1/4 - 20	2000
LRT1140A	Natural	HDPE	1.000		18	1/4 - 20	3000

END CAPS

**FREE
SAMPLES
AVAILABLE**

800 847 0486

www.essentracomponents.com

**ROUND THREADED INSERT GLIDES****RDH Series****Round Heavy Duty Threaded Inserts**

Specifications:

- Material: Glass-Filled Nylon with Brass Threaded Insert
- Color: Black

Features:

- Threaded brass insert for indoor and outdoor use
- High load rating is ideal for machinery use

Imperial

Item No.	Tube Size In	Thread Size	Tube Gauge	Wall Thickness In	Max Static Load N	Bulk Pack Qty.
RDH0100A	1.500	3/8 - 16	16	0.065	1100	48
RDH0150A	1.500	1/2 - 13	16	0.065	1100	48
RDH0200A	1.500	5/8 - 11	16	0.065	1100	48
RDH0250A	1.500	3/4 - 10	16	0.065	1100	48
RDH0300A	2.000	3/8 - 16	16	0.065	1250	24
RDH0350A	2.000	1/2 - 13	16	0.065	1250	24
RDH0400A	2.000	5/8 - 11	16	0.065	1250	24
RDH0450A	2.000	3/4 - 10	16	0.065	2000	24
RDH0500A	2.000	3/8 - 16	12	0.109	1250	24
RDH0550A	2.000	1/2 - 13	12	0.109	1250	24
RDH0600A	2.000	5/8 - 11	12	0.109	1250	24
RDH0650A	2.000	3/4 - 10	12	0.109	2000	24

Metric

Item No.	Tube Size mm	Thread Size mm	Tube Gauge mm	Max Static Load N	Bulk Pack Qty.
1286377	30	M10	1	4500	48
1286378	30	M12	1	4500	48
1286379	30	M16	1	4500	48
1286380	38	M10	1.5	5000	48
1286381	38	M12	1.5	5000	48
1286382	38	M16	1.5	5000	48
1286383	42	M10	1.5	5000	48
1286384	42	M12	1.5	5000	48
1286385	42	M16	1.5	5000	48
1286386	42	M20	1.5	5000	48
1286387	48	M10	1.5	5500	24
1286388	48	M12	1.5	5500	24
1286389	48	M16	1.5	5500	24
1286390	48	M20	1.5	8500	24
1286391	50	M12	1.5	5500	24
1286392	50	M16	1.5	5500	24
1286393	50	M20	1.5	8500	24

RDM Series**Round Metal Threaded Inserts**

Specifications:

- Material: High-Density Polyethylene with Zinc-Plated Steel-Threaded Insert
- Color: Black

Features:

- Tube inserts with internal threads to accommodate adjustable leveling mounts and feet
- Ribbed to accommodate multiple gauges



Sizing & Selector

GUIDE

See Page 282

**Imperial**

Item No.	Tube Size	Thread Size	Gauge	Wall Thickness in	Bulk Pack Qty.
RDM0100A	0.750	1/4 - 20	16 - 18	0.049 - 0.065	1000
RDM0150A	0.875	1/4 - 20	16 - 18	0.049 - 0.065	1000
RDM0200A	0.875	1/4 - 20	12 - 14	0.083 - 0.109	1000
RDM0250A	0.875	1/4 - 20	10 - 11	0.120 - 0.134	1000
RDM0300A	1.000	1/4 - 20	16 - 18	0.049 - 0.065	1000
RDM0350A	1.000	5/16 - 18	16 - 18	0.049 - 0.065	1000
RDM0400A	1.000	1/4 - 20	12 - 14	0.083 - 0.109	750
RDM0450A	1.000	5/16 - 18	12 - 14	0.083 - 0.109	750
RDM0500A	1.000	1/4 - 20	10 - 11	0.120 - 0.134	750
RDM0550A	1.000	5/16 - 20	10 - 11	0.120 - 0.134	750
RDM0600A	1.125	5/16 - 18	16 - 18	0.049 - 0.065	500
RDM0650A	1.125	3/8 - 16	16 - 18	0.049 - 0.065	500
RDM0700A	1.250	5/16 - 18	16 - 18	0.049 - 0.065	500
RDM0750A	1.250	3/8 - 16	16 - 18	0.049 - 0.065	500
RDM0800A	1.250	5/16 - 18	12 - 14	0.083 - 0.109	500
RDM0950A	1.375	3/8 - 16	16 - 18	0.049 - 0.065	500
RDM1050A	1.500	5/16 - 18	16 - 18	0.049 - 0.065	500
RDM1100A	1.500	3/8 - 16	16 - 18	0.049 - 0.065	500
RDM1150A	1.500	5/16 - 18	12 - 14	0.083 - 0.109	500
RDM1200A	1.500	3/8 - 16	12 - 14	0.083 - 0.109	500
RDM2000A	2.000	5/16 - 18	14 - 16	0.065 - 0.083	500
RDM2050A	2.000	3/8 - 16	14 - 16	0.065 - 0.083	500

Metric

Item No.	Tube Size mm	Thread Size mm	Gauge	Wall Thickness mm	Bulk Pack Qty.
498560	19	M6	17 - 19	1.1 - 1.5	1000
498561	20	M6	17 - 19	1.1 - 1.5	1000
498562	20	M8	17 - 19	1.1 - 1.5	1000
498563	25	M6	17 - 19	1.1 - 1.5	500
498564	25	M8	17 - 19	1.1 - 1.5	1000
498565	30	M8	17 - 19	1.1 - 1.5	500
498566	30	M10	17 - 19	1.1 - 1.5	500
498567	32	M8	17 - 19	1.1 - 1.5	500
498568	32	M10	17 - 19	1.1 - 1.5	1000
498569	35	M8	17 - 19	1.1 - 1.5	500
498570	35	M10	17 - 19	1.1 - 1.5	250
498571	38	M8	17 - 19	1.1 - 1.5	250
498572	38	M10	17 - 19	1.1 - 1.5	500
498573	38	M12	17 - 19	1.1 - 1.5	500
498574	40	M8	17 - 19	1.1 - 1.5	250
498575	40	M10	17 - 19	1.1 - 1.5	250
498576	40	M12	17 - 19	1.1 - 1.5	500
498577	50	M8	17 - 19	1.1 - 1.5	100
498578	50	M10	17 - 19	1.1 - 1.5	500
498579	50	M12	17 - 19	1.1 - 1.5	100
498580	60	M8	17 - 19	1.1 - 1.5	250
498581	60	M10	17 - 19	1.1 - 1.5	100
498582	60	M12	17 - 19	1.1 - 1.5	100



ROUND INSERT GLIDES / ROUND FERRULE CAPS

RAG Series Round Angled Tube Inserts

Specifications:

- Material: Nylon
- Color: See Table

Features:

- Ideal for applications with fixed leg angles
- Round angle insert glides fit flush with tubing outer dimensions for a clean, finished look
- Ideal for load bearing applications



Item No.		Tube OD	Tube Gauge	Wall Thickness	Degree	Bulk Pack Qty.
Black	Natural	in		in		
RAG1220A	RAG1220B	0.750	16	0.065	25.5°	2500
RAG1240A	RAG1240B	0.875	16	0.065	19°	3500
RAG1260A	RAG1260B	0.875	17	0.058	19°	3500
RAG1270A	RAG1270B	1.000	16	0.065	12°	3200
—	RAG1280B	1.000	16	0.065	19°	3000
RAG1310A	RAG1310B	1.000	18	0.049	12°	3000

Item No.		Tube OD	Tube Gauge	Wall Thickness	Degree	Bulk Pack Qty.
Black	Natural	in		in		
—	RAG1320B	1.000	18	0.049	19°	3000
RAG1325A	RAG1325B	1.125	16	0.065	15°	2000
RAG1340A	RAG1340B	1.250	16	0.065	15°	1800
RAG1350A	RAG1350B	1.250	17	0.058	7°	900
RAG1360A	RAG1360B	1.250	18	0.049	15°	1200
RAG1375A	RAG1375B	1.500	16	0.065	19°	900

HLD Series High Line Domed Ferrule Caps

Specifications:

- Material: Elastomeric Polyethylene
- Color: See Table

Features:

- High-line domed caps are tall and durable
- Ideal for non-skid applications
- Thinner wall section results in ease of installation



Item No.		Tube OD		Bulk Pack Qty.
Black	White	in	mm	
HLD0750A	HLD0750C	0.750	19.05	1100
HLD0875A	HLD0875C	0.875	22.22	1100
HLD1000A	HLD1000C	1.000	25.40	2000

HDC Series Heavy Duty Ferrule Caps

Specifications:

- Material: Low-Density Polyethylene
- Color: Black

Features:

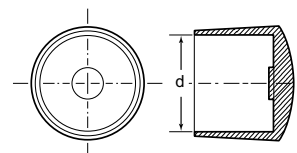
- Style A – Low-silhouette cap for general applications (1/2" height)
- Style B – High-line cap for heavy-duty applications (1" height)
- Style C – Heavy-duty caps, designed for institutional applications, incorporate a thick internal ledge to resist cut-thru by sharp tubing ends (1" height)



Item No.	Tube OD		Style	Bulk Pack Qty.
	in	mm		
HDC0375A	0.375	9.53	B	10000
HDC0750A	0.750	19.05	A	6500
HDC0875A	0.875	22.23	B	3000
HDC1125A	1.125	28.58	C	650
HDC1250A	1.250	31.75	A	1800
HDC1500A	1.500	38.10	A	1300

FRD Series Round Ferrule Caps

Item No.	Tube OD (d)	Bulk Pack Qty.
	in	
FRD0437A	0.437	10000
FRD0500A	0.500	10000
FRD0625A	0.625	5000
FRD0750A	0.750	4000
FRD0875A	0.875	2500
FRD1000A	1.000	1500
FRD1125A	1.125	1000
FRD1250A	1.250	1000
FRD1500A	1.500	500
FRD1750A	1.750	500
FRD2000A	2.000	300
FRD3000A	3.000	150



Specifications:

- Material: Low-Density Polyethylene
- Color: Black

Features:

- Provides a neat finish to products manufactured from tubular steel



**ROUND TUBE CAPS****RSC/LLD Series
Round End Caps**

Specifications:

- Material: Low-Density Polyethylene (RSC) or Elastomeric Polyethylene (LLD)
- Color: Black

Features:

- An integrated step lead permits fast positioning and quick assembly for an economical and attractive way of finishing the end of a rod or tube
- The LLD caps have a thick rounded base for long wear and use on a wide range of leg angles



Item No.	Tube OD		Bulk Pack Qty.
	in		
RSC0375A	0.375		12000
RSC0500A	0.500		7000
RSC0625A	0.625		5000
RSC0750A	0.750		3000
RSC0875A	0.875		3000
RSC1000A	1.000		2500
LLD1000A	1.000		1500
RSC1125A	1.125		1600
RSC1250A	1.250		1800

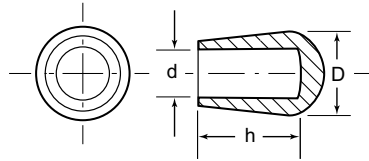
**FTP Series
Round Tapered Ferrule Caps**

Specifications:

- Material: See Table
- Color: Black

Features:

- Tapered ferrules are often used as a safety cap on protruding steel rods or bars



Item No.	Tube OD (d)		D	Material	Bulk Pack Qty.
	in				
FTP0187A	0.187	0.468	0.406	PVC	10000
FTP0250A	0.250	0.468	0.406	PVC	10000
FTP0312A	0.312	0.562	0.500	PVC	10000
FTP0312LPA	0.312	0.906	0.516	LDPE	5000
FTP0375A	0.375	0.625	0.594	PVC	5000
FTP0500LPA	0.500	0.906	0.735	LDPE	4000

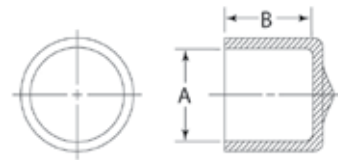
**DM Series
Round Vinyl End Caps**

Specifications:

- Material: PVC
- Color: White

Features:

- Designed to fit standard tube dimension
- Glossy Finish



Item No.	Tube OD		B	Bulk Pack Qty.
	in			
DM0750-1H	3/4		1	2500
DM0875-1G	7/8		1	2500
DM1000-1C	1		1	2000

We make finding
your ideal
product easy!

Need help? Call us!
800 847 0486





RECTANGLE TUBE INSERT GLIDES

RCR Series Rectangular Ribbed Tube Inserts

Specifications:

- Material: Low-Density Polyethylene
- Surface Finish: See Table
- Color: See Table

Features:

- Perimeter rib design allows for easy assembly and secure fit
- Tube inserts fit a wider gauge range



Imperial

Item No.	Color	Surface Finish	Tube Size		Bulk Pack Qty.
			in	Tube Gauge	
RCR111339A	Black	Polished	1.000 x 0.500	16 - 20	1000
RCR111356A	Black	Textured	1.000 x 0.500	16 - 20	1000
RCR111508A	Black	Polished	1.375 x 0.625	11 - 19	2500
RCR111546A	Black	Textured	1.375 x 0.625	11 - 19	2500
RCR111622A	White	Textured	1.375 x 0.625	11 - 19	2500
RCR111343A	Black	Polished	1.500 x 0.750	11 - 19	1000
RCR111360A	Black	Textured	1.500 x 0.750	11 - 19	1000
RCR111377A	White	Polished	1.500 x 0.750	11 - 19	1000
RCR111510A	Black	Polished	1.500 x 1.000	11 - 19	2000
RCR111548A	Black	Textured	1.500 x 1.000	11 - 19	2000
RCR111624A	White	Textured	1.500 x 1.000	11 - 19	2000
RCR111348A	Black	Polished	2.000 x 1.000	11 - 19	1000
RCR111365A	Black	Textured	2.000 x 1.000	11 - 19	1000
RCR111382A	White	Polished	2.000 x 1.000	11 - 19	1000
RCR111512A	Black	Polished	2.000 x 1.250	11 - 19	1000
RCR111550A	Black	Textured	2.000 x 1.250	11 - 19	1000
RCR111626A	White	Textured	2.000 x 1.250	11 - 19	1000
RCR25101618A	Black	Polished	2.500 x 1.000	16 - 18	1000
RCR25151216A	Black	Polished	2.500 x 1.500	12 - 16	500
RCR111514A	Black	Polished	3.000 x 1.500	8 - 14	250
RCR111552A	Black	Textured	3.000 x 1.500	8 - 14	250
RCR111628A	White	Textured	3.000 x 1.500	8 - 14	250
RCR111516A	Black	Polished	3.000 x 2.000	8 - 14	250
RCR111554A	Black	Polished	3.000 x 2.000	8 - 14	250

Metric

Item No.	Color	Finish	Tube Size		Bulk Pack Qty.
			mm	Tube Gauge	
RCR111338A	Black	Polished	25 x 10	16 - 20	2000
RCR111355A	Black	Textured	25 x 10	16 - 20	2000
RCR199254A	Black	Polished	30 x 10	17 - 20	5000
RCR111340A	Black	Polished	30 x 15	11 - 19	1000
RCR111357A	Black	Textured	30 x 15	11 - 19	1000
RCR111341A	Black	Polished	30 x 20	11 - 19	1000
RCR111358A	Black	Textured	30 x 20	11 - 19	1000
RCR111509A	Black	Polished	35 x 20	11 - 19	2000
RCR111547A	Black	Textured	35 x 20	11 - 19	2000
RCR466544A	Black	Textured	40 x 15	14 - 17	1000
RCR111344A	Black	Polished	40 x 20	11 - 19	1000
RCR111361A	Black	Textured	40 x 20	11 - 19	1000
RCR111511A	Black	Polished	40 x 25	8 - 14	1500
RCR111549A	Black	Textured	40 x 25	8 - 14	1500
RCR111481A	Black	Polished	60 x 30	11 - 19	500
RCR111482A	Black	Textured	60 x 30	11 - 19	500
RCR111802A	Black	Polished	60 x 40	11 - 19	500
RCR111803A	Black	Textured	60 x 40	11 - 19	500
RCR111351A	Black	Polished	60 x 40	8 - 14	500
RCR111368A	Black	Textured	60 x 40	8 - 14	500
RCR460727A	Black	Textured	70 x 25	14 - 19	500
RCR199283A	Black	Textured	75 x 25	14 - 16	500
RCR111515A	Black	Polished	75 x 50	8 - 14	250
RCR111553A	Black	Textured	75 x 50	8 - 14	250
RCR111474A	Black	Textured	80 x 40	11 - 19	250
RCR111353A	Black	Polished	80 x 50	8 - 14	250
RCR111370A	Black	Textured	80 x 50	8 - 14	250
RCR460736A	Black	Textured	90 x 40	8 - 14	300
RCR199231A	Black	Textured	100 x 40	8 - 14	250
RCRM10502040A	Black	Textured	100 x 50	10 - 14	200
RCR460743A	Black	Textured	120 x 30	13 - 19	300
RCR460749A	Black	Textured	150 x 50	8 - 14	100

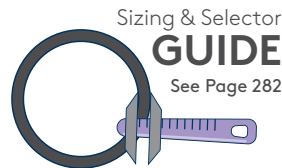
RTG Series Rectangular Load Bearing Glides

Specifications:

- Material: ABS
- Color: Black

Features:

- Suitable for heavy-duty applications
- Step lead provides for easy installation
- Press fit assures a secure hold in tubing



See Page 282

Item No.	Tube Size		Wall Thickness	Bulk Pack Qty.
	in	Tube Gauge		
RTG1100A	0.500 x 1.000	16	0.065	6000
RTG1110A	0.500 x 1.000	18	0.049	3800
RTG1120A	0.500 x 1.250	16	0.065	5000
RTG1150A	0.500 x 1.500	16	0.065	4000
RTG1160A	0.500 x 1.500	18	0.049	4000
RTG1190A	0.750 x 1.250	18	0.049	2800
RTG1210A	0.750 x 1.500	14	0.083	2500
RTG1220A	0.750 x 1.500	16	0.065	2200
RTG1230A	0.750 x 1.500	18	0.049	2200
RTG1240A	0.750 x 2.000	16	0.065	2000
RTG1250A	1.000 x 1.500	11	0.120	2000
RTG1270A	1.000 x 1.500	14	0.083	2000
RTG1280A	1.000 x 1.500	16	0.065	1800
RTG1290A	1.000 x 1.500	18	0.049	2100
RTG1310A	1.000 x 2.000	11	0.120	1400
RTG1340A	1.000 x 2.000	14	0.083	1400
RTG1350A	1.000 x 2.000	16	0.065	1200
RTG1359B	1.000 X 2.000	17	0.058	1400
RTG1370A	1.000 x 2.000	18	0.049	1400
RTG1390A	1.000 x 3.000	11	0.120	1300
RTG1400A	1.000 x 3.000	14	0.083	1300

Item No.	Tube Size		Wall Thickness	Bulk Pack Qty.
	in	Tube Gauge		
RTG1410A	1.000 x 3.000	16	0.065	1300
RTG1420A	1.250 x 2.000	12	0.109	1200
RTG1430A	1.250 x 2.000	14	0.083	800
RTG1440A	1.250 x 2.000	16	0.065	800
RTG1450A	1.500 x 2.000	11	0.120	900
RTG1460A	1.500 x 2.000	14	0.083	900
RTG1470A	1.500 x 2.000	15	0.072	900
RTG1480A	1.500 x 2.000	16	0.065	900
RTG1490A	1.500 x 2.500	11	0.120	500
RTG1500A	1.500 x 2.500	12	0.109	600
RTG1510A	1.500 x 2.500	16	0.065	900
RTG1521A	1.500 x 3.000	11	0.120	900
RTG1530A	1.500 x 3.000	14	0.083	1000
RTG1540A	1.500 x 3.000	16	0.065	500
RTG1550A	1.500 x 4.000	16	0.065	500
RTG1560A	2.000 x 3.000	11	0.120	700
RTG1570A	2.000 x 3.000	14	0.083	700
RTG1580B	2.000 x 4.000	11	0.120	350
RTG1590B	2.000 x 4.000	13	0.095	350
RTG1600B	2.000 x 4.000	16	0.065	350



THREADED INSERTS

RCM Series

Rectangular Metal Threaded Inserts

Specifications:

- Material: High-Density Polyethylene with Zinc-Plated Steel-Threaded Insert
- Color: Black

Features:

- Tube inserts with internal threads to accommodate adjustable leveling mounts and feet
- Ribbed to accommodate multiple gauges



Imperial

Item No.	Tube Size in	Thread Size in	Tube Gauge in	Wall Thickness in	Bulk Pack Qty.
RCM0150A	0.75 x 1.50	1/4 - 20	16 - 18	0.049 - 0.065	500
RCM0250A	1.00 x 1.50	1/4 - 20	16 - 18	0.049 - 0.065	500
RCM0300A	1.00 x 1.50	5/16 - 18	16 - 18	0.049 - 0.065	500
RCM0350A	2.00 x 1.00	5/16 - 18	16 - 18	0.049 - 0.065	250
RCM0400A	2.00 x 1.00	5/16 - 18	14 - 16	0.065 - 0.083	250
RCM0600A	3.00 x 1.50	3/8 - 16	14 - 16	0.065 - 0.083	250

Metric

Item No.	Tube Size mm	Thread Size mm	Tube Gauge mm	Wall Thickness mm	Bulk Pack Qty.
498598	30 x 20	M8	17 - 19	1.1 - 1.5	500
498599	30 x 20	M10	17 - 19	1.1 - 1.5	1000
498600	40 x 20	M8	17 - 19	1.1 - 1.5	250
498601	40 x 20	M10	17 - 19	1.1 - 1.5	500
498602	40 x 30	M8	17 - 19	1.1 - 1.5	500
498603	40 x 30	M10	17 - 19	1.1 - 1.5	500
498604	50 x 25	M8	17 - 19	1.1 - 1.5	250
498605	50 x 25	M10	17 - 19	1.1 - 1.5	500
498606	50 x 30	M8	17 - 19	1.1 - 1.5	200
498607	50 x 30	M10	17 - 19	1.1 - 1.5	500
498608	60 x 30	M8	17 - 19	1.1 - 1.5	250
498609	60 x 30	M10	17 - 19	1.1 - 1.5	250

SAI Series

Square Ribbed Inserts with Adjustable Feet

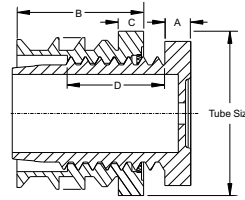


Specifications:

- Material: Nylon
- Color: Black

Features:

- Rugged, durable, heavy duty
- Resists lateral stresses
- Threaded insert and height adjuster in one piece



Item No.	Square Tube Size		Fits		Reference Dimensions				Axial Load	Bulk Pack Qty.
	in	mm	Tube Gauge	mm	A	B	C	D	lbs	
SAI100A	0.750	20.00	14 - 18	1.5 - 2.0	0.158	0.866	0.197	0.945	220	100
SAI200A	0.875	22.00	14 - 18	1.5 - 2.0	0.158	0.866	0.197	0.945	220	200
SAI300A	1.000	25.00	14 - 18	1.5 - 2.0	0.197	0.985	0.197	0.906	330	300
SAI400A	1.181	30.00	14 - 18	1.5 - 2.0	0.197	0.985	0.197	0.787	660	100
SAI500A	1.375	35.00	14 - 18	1.5 - 2.0	0.197	1.358	0.197	0.787	660	100
SAI600A	1.500	40.00	14 - 18	1.5 - 2.0	0.197	1.358	0.197	0.787	660	100
SAI700A	1.750	45.00	14 - 18	1.5 - 2.0	0.197	1.358	0.197	1.102	660	100
SAI800A	2.000	50.00	14 - 18	1.5 - 2.0	0.197	1.358	0.197	1.142	660	100

RAI Series

Round Ribbed Inserts with Adjustable Feet

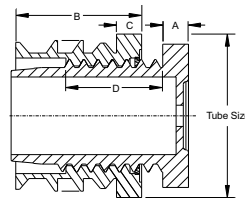


Specifications:

- Material: Nylon
- Color: Black

Features:

- Rugged, durable, heavy duty
- Resists lateral stresses
- Threaded insert and height adjuster in one piece



Item No.	Tube Size		Fits		Reference Dimensions				Axial Load	Bulk Pack Qty.
	in	mm	Tube Gauge	mm	A Ref	B Ref	C Ref	D Ref	lbs	
RAI100A	1.250	32	14 - 18	1.5-2.0	0.197	0.985	0.197	0.787	660	800
RAI200A	1.375	35	14 - 18	1.5-2.0	0.197	1.358	0.197	0.787	660	100
RAI300A	1.500	40	14 - 18	1.5-2.0	0.197	1.358	0.197	0.787	660	100
RAI400A	1.750	45	14 - 18	1.5-2.0	0.197	1.358	0.197	1.102	660	100
RAI500A	2.000	50	14 - 18	1.5-2.0	0.197	1.358	0.197	1.181	660	100
RAI600A	2.375	60	14 - 18	1.5-2.0	0.394	1.595	0.236	1.457	660	100
RAI700A	3.125	80	14 - 18	1.5-2.0	0.394	1.595	0.236	1.457	660	100

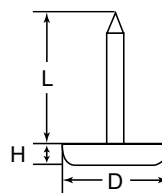


TACK, SCREW-IN & ADHESIVE GLIDES

TKG Series Tack Glides

Specifications:

- Material: High-Density Polyethylene with Nickel Plated Nail
- Color: See Table



Features:

- Ideal for wooden furniture

Item No.		D		H		L		Bulk Pack Qty.
Natural	Brown	in	mm	in	mm	in	mm	
TKG1010A	TKG1010B	0.625	15.88	0.250	6.35	0.719	18.26	6000
TKG1020A	TKG1020B	0.750	19.05	0.250	6.35	0.719	18.26	4500
TKG1030A	TKG1030B	0.875	22.23	0.250	6.35	0.719	18.26	4000
TKG1040A	TKG1040B	1.000	25.40	0.250	6.35	0.719	18.26	3000

TKT Series PTFE Based Glide

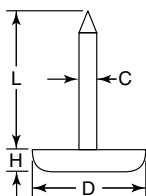


Specifications:

- Material: PTFE
- Color: Natural

Features:

- Ideal when easy movement is essential



Item No.	D	H	L	C	Bulk Pack Qty.
499499	0.750	0.393	0.709	0.102	200
499500	0.870	0.393	0.709	0.102	200
499501	0.980	0.393	0.709	0.102	200
499502	1.180	0.393	0.709	0.102	200
499503	1.460	0.393	0.709	0.102	200

Screw-In Glides

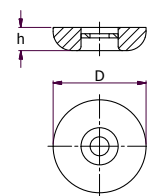


Specifications:

- Material: Glide: PTFE
Material: Washer: Steel
- Color: Natural

Features:

- Includes metal screw
- Easy assembly



Item No.	D	H	Bulk Pack Qty.
	In	In	
499483	0.875	0.219	200
499484	1.000	0.203	200
499485	1.188	0.203	200
499486	1.500	0.220	200
499487	2.000	0.219	200

Adhesive Glides

Specifications:

- Material: PTFE with adhesive backing
- Color: Natural

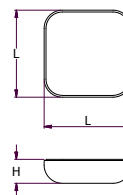
Features:

- Easy to apply
- Smooth glide action
- Protects surfaces



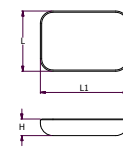
Square

Item No.	L	H	Bulk Pack Qty.
	in	in	
499488	1.000	0.250	200
499490	1.188	0.250	200
499494	1.500	0.281	200
499495	1.750	0.281	200
499496	2.000	0.250	200



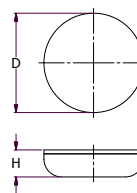
Rectangular

Item No.	L	L1	H	Bulk Pack Qty.
	in	in	in	
499489	1.000	1.375	0.267	200
499497	0.750	2.750	0.250	200
499492	1.000	4.000	0.250	200



Round

Item No.	D	H	Bulk Pack Qty.
	in	in	
499475	0.750	0.172	200
499476	0.875	0.250	200
499477	1.000	0.172	200
499478	1.188	0.172	200
499479	1.500	0.250	200
499480	2.000	0.250	200
499481	2.500	0.250	200





PLASTIC BASED LEVELERS

AFP & AFPM Series Articulating Adjustable Feet

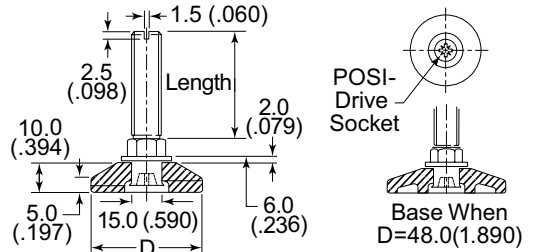


Specifications:

- Material: Polypropylene, Low-Carbon Steel Stud with Zinc-Plated Finish
- Color: Black

Features:

- Allows adjustment under load with base remaining stationary



Imperial

Item No.	D (Base)		Stud Length	Bulk Pack Qty.
	in	Thread Size		
AFP25100A	0.984	1/4 - 20	0.750	100
AFP25110A	0.984	5/16 - 18	1.000	100
AFP25120A	0.984	5/16 - 18	1.500	100
AFP25130A	0.984	5/16 - 18	2.000	100
AFP25140A	0.984	5/16 - 18	2.750	100
AFP25150A	0.984	5/16 - 18	4.000	100
AFP30100A	1.181	5/16 - 18	1.000	100
AFP30110A	1.181	5/16 - 18	1.500	100
AFP30120A	1.181	5/16 - 18	2.000	100
AFP30130A	1.181	5/16 - 18	2.750	100
AFP30140A	1.181	5/16 - 18	3.000	100
AFP30150A	1.181	5/16 - 18	4.000	100
AFP30160A	1.181	3/8 - 16	1.000	100
AFP30180A	1.181	3/8 - 16	1.500	100
AFP30200A	1.181	3/8 - 16	2.000	100
AFP30210A	1.181	3/8 - 16	2.750	100
AFP30220A	1.181	3/8 - 16	4.000	100
AFP38100A	1.500	5/16 - 18	1.000	100
AFP38120A	1.500	5/16 - 18	1.500	100
AFP38130A	1.500	5/16 - 18	2.000	100
AFP38140A	1.500	5/16 - 18	2.750	100
AFP38150A	1.500	5/16 - 18	3.000	100
AFP38160A	1.500	5/16 - 18	4.000	100
AFP38170A	1.500	3/8 - 16	1.000	100
AFP38180A	1.500	3/8 - 16	1.500	100
AFP38200A	1.500	3/8 - 16	2.000	100
AFP38210A	1.500	3/8 - 16	2.750	100
AFP38220A	1.500	3/8 - 16	3.000	100
AFP38230A	1.500	3/8 - 16	4.000	100
AFP38240A	1.500	1/2 - 13	1.000	100
AFP38250A	1.500	1/2 - 13	1.500	100
AFP38260A	1.500	1/2 - 13	2.000	100
AFP38280A	1.500	1/2 - 13	2.750	100
AFP38290A	1.500	1/2 - 13	4.000	100
AFP48100A	1.890	5/16 - 18	1.000	100
AFP48110A	1.890	5/16 - 18	1.500	100
AFP48130A	1.890	5/16 - 18	2.000	100
AFP48140A	1.890	5/16 - 18	2.750	100
AFP48150A	1.890	5/16 - 18	4.000	100
AFP48170A	1.890	3/8 - 16	1.000	100
AFP48180A	1.890	3/8 - 16	1.500	100
AFP48200A	1.890	3/8 - 16	2.000	100
AFP48210A	1.890	3/8 - 16	2.375	100
AFP48220A	1.890	3/8 - 16	2.750	100
AFP48240A	1.890	3/8 - 16	4.000	100
AFP48250A	1.890	1/2 - 13	1.000	100
AFP48260A	1.890	1/2 - 13	1.500	100
AFP48270A	1.890	1/2 - 13	2.000	100
AFP48280A	1.890	1/2 - 13	2.750	100
AFP48290A	1.890	1/2 - 13	4.000	100

Metric

Item No.	D (Base)		Stud Length	Bulk Pack Qty.
	mm	Thread Size		
466212	25	M6	20	500
466167	25	M8	25	500
466168	25	M8	40	350
466169	25	M8	55	250
466170	25	M8	70	200
466171	25	M8	100	150
466172	30	M6	25	400
466173	30	M6	40	300
466174	30	M6	55	200
466175	30	M6	70	150
466176	30	M6	100	100
466177	30	M10	25	300
466178	30	M10	40	200
466179	30	M10	55	100
466180	30	M10	70	100
466181	30	M10	100	50
466182	38	M8	25	400
466183	38	M8	40	300
466184	38	M8	55	200
466185	38	M8	70	150
466186	38	M8	100	100
466187	38	M10	25	300
466188	38	M10	40	200
466189	38	M10	55	100
466190	38	M10	70	100
466191	38	M10	100	50
466192	38	M12	25	200
466193	38	M12	40	150
466194	38	M12	55	150
466195	38	M12	70	50
466196	38	M12	100	100
466197	48	M8	25	200
466198	48	M8	40	150
466199	48	M8	55	150
466200	48	M8	70	100
466201	48	M8	100	100
466202	48	M10	25	150
466203	48	M10	40	100
466204	48	M10	55	100
466205	48	M10	70	50
466206	48	M10	100	100
466207	48	M12	25	100
466208	48	M12	40	100
466209	48	M12	55	100
466211	48	M12	100	50

PLASTIC BASED LEVELERS



AFM & AFMP Series
Swivel/Tilting Adjustable Machinery Feet

Specifications:

- Material: Nylon Base (AFM) or Rubber (AFMP) with Zinc Plated Steel Stud
- Color: Black

Features:

- Ideal for mounting machines or conveyers
- High Load bearing of 2000lbs (900kg) per foot
- Tilting and swiveling design (20° Max)



AFM Series

Item No.			Stud Length	Ø Base	Bulk Pack Qty.
Plain Base	Bolt-Down Base	Thread	in	in	
AFM1100A	—	5/16 - 18	2.5	1.57	40
AFM1200A	—	5/16 - 18	2.5	1.97	40
—	AFM1300B	5/16 - 18	2.5	2.36	40
AFM1400A	—	5/16 - 18	3.5	1.57	40
AFM1500A	—	5/16 - 18	3.5	1.97	40
—	AFM1600B	5/16 - 18	3.5	2.36	40
AFM2050A	—	3/8 - 16	3.0	1.97	40
—	AFM2100B	3/8 - 16	3.0	2.36	40
AFM2150A	—	3/8 - 16	3.0	3.15	40
AFM2200A	—	3/8 - 16	4.0	1.97	40
—	AFM2250B	3/8 - 16	4.0	2.36	40
AFM2300A	—	3/8 - 16	4.0	3.15	40
AFM3100A	—	1/2 - 13	3.0	1.97	24
—	AFM3150B	1/2 - 13	3.0	2.36	24
AFM3200A	AFM3200B	1/2 - 13	3.0	3.15	24
AFM3300A	—	1/2 - 13	4.0	1.97	24
AFM3400A	AFM3400B	1/2 - 13	4.0	3.15	24
—	AFM3450B	1/2 - 13	4.0	3.94	24
AFM3500A	—	1/2 - 13	5.0	2.36	24
AFM3600A	AFM3600B	1/2 - 13	5.0	3.15	24
—	AFM3700B	1/2 - 13	5.0	3.94	24
AFM4100A	—	5/8 - 11	3.0	1.97	20
—	AFM4150B	5/8 - 11	3.0	2.36	20
AFM4200A	—	5/8 - 11	3.0	3.15	20
AFM4250A	—	5/8 - 11	4.0	1.97	20
AFM4300A	AFM4300B	5/8 - 11	4.0	3.15	20
—	AFM4400B	5/8 - 11	4.0	3.94	20
AFM4450A	—	5/8 - 11	6.0	3.15	20
AFM4500A	AFM4500B	5/8 - 11	6.0	3.94	20
AFM4600A	—	5/8 - 11	6.0	4.72	20
AFM4650A	—	5/8 - 11	8.0	3.15	20
AFM4700A	—	5/8 - 11	8.0	3.94	20
AFM4800A	AFM4800B	5/8 - 11	8.0	4.72	20
AFM5400A	—	3/4 - 10	6.0	3.15	20
AFM5450A	—	3/4 - 10	6.0	3.94	20
AFM5500A	AFM5500B	3/4 - 10	6.0	4.72	12
AFM5600A	—	3/4 - 10	8.0	3.15	12
AFM5650A	—	3/4 - 10	8.0	3.94	12
AFM5700A	AFM5700B	3/4 - 10	8.0	4.72	12

AFMP Series - Optional Non-Slip Pad

Item No.		Ø Base	Bulk Pack Qty.
Plain Base	Bolt-Down Base	in	
AFMP040A	—	1.57	40
AFMP050A	—	1.97	40
AFMP060A	AFMP060B	2.36	24
AFMP080A	AFMP080B	3.15	20
AFMP100A	AFMP100B	3.94	20
AFMP120A	AFMP120B	4.72	12



**METRIC SIZES
ALSO AVAILABLE**

Shop metric options for leveling feet & glides at www.essentracomponents.com



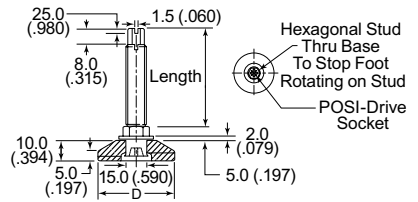
PLASTIC BASED LEVELERS

AFS & AFSM Series Rigid Adjustable Feet



Specifications:

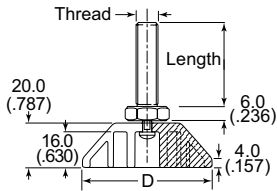
- Material: Polypropylene, Low-Carbon Steel Stud with Zinc-Plated Finish
- Color: Black



Imperial

Item No.	D (Base)		Stud Length	Bulk Pack Qty.
	in	Thread Size		
AFS48410A	1.890	5/16-18	1.000	100
AFS48420A	1.890	5/16-18	1.500	100
AFS48430A	1.890	5/16-18	2.000	100
AFS48440A	1.890	5/16-18	2.750	100
AFS48450A	1.890	5/16-18	4.000	100
AFS48460A	1.890	3/8-16	1.000	100
AFS48470A	1.890	3/8-16	1.500	100
AFS48480A	1.890	3/8-16	2.000	100
AFS48490A	1.890	3/8-16	2.750	100
AFS48500A	1.890	3/8-16	4.000	100
AFS48510A	1.890	1/2-13	1.000	100
AFS48520A	1.890	1/2-13	1.500	100
AFS48530A	1.890	1/2-13	2.000	100
AFS48540A	1.890	1/2-13	2.750	100
AFS48550A	1.890	1/2-13	4.000	100

AFT & AFTM Series Swivel/Tilting Adjustable Feet



Specifications:

- Material: Polypropylene Zinc-Plated Steel Tilt Ball and Stud
- Color: Black

Features:

- Max 25° tilt



Imperial

Item No.	D (Base)		Thread Size	Stud Length	Bulk Pack Qty.
	in				
AFT25100A	0.984	1/4 - 20	1.000	100	
AFT25110A	0.984	5/16 - 18	0.500	100	
AFT25120A	0.984	5/16 - 18	1.000	100	
AFT25130A	0.984	3/8 - 16	0.500	100	
AFT25140A	0.984	3/8 - 16	1.500	100	
AFT25150A	0.984	3/8 - 16	2.000	100	
AFT32160A	1.260	1/4 - 20	1.000	100	
AFT32170A	1.260	5/16 - 18	1.000	100	
AFT32180A	1.260	5/16 - 18	1.500	100	
AFT32190A	1.260	3/8 - 16	1.000	100	
AFT32200A	1.260	3/8 - 16	2.000	100	
AFT32210A	1.260	3/8 - 16	3.000	100	
AFT38220A	1.496	5/16 - 18	1.000	100	
AFT38230A	1.496	5/16 - 18	1.500	100	
AFT38240A	1.496	3/8 - 16	1.000	100	
AFT38250A	1.496	3/8 - 16	2.000	100	
AFT38260A	1.496	3/8 - 16	3.000	100	
AFT47270A	1.850	5/16 - 18	1.000	100	
AFT47280A	1.850	5/16 - 18	2.000	100	
AFT47290A	1.850	3/8 - 16	1.000	100	
AFT47300A	1.850	3/8 - 16	2.000	100	
AFT47310A	1.850	3/8 - 16	3.000	100	

AFSM Metric

Item No.	D (Base)		Thread Size	Stud Length	Bulk Pack Qty.
	mm				
466121	25	M6	20	500	
466122	25	M8	25	500	
466123	25	M8	40	350	
466124	25	M8	55	250	
466125	25	M8	70	200	
466126	25	M8	100	150	
466127	30	M8	25	400	
466128	30	M8	40	300	
466129	30	M8	55	200	
466130	30	M8	70	150	
466131	30	M8	100	100	
466132	30	M10	25	300	
466133	30	M10	40	200	
466134	30	M10	55	100	
466135	30	M10	70	100	
466136	30	M10	100	50	
466137	38	M8	25	400	
466138	38	M8	40	300	
466139	38	M8	55	200	
466140	38	M8	70	150	
466141	38	M8	100	100	
466142	38	M10	25	300	
466143	38	M10	40	200	
466144	38	M10	55	100	
466145	38	M10	70	100	
466146	38	M10	100	50	
466147	38	M12	25	200	
466148	38	M12	40	150	
466149	38	M12	55	150	
466150	38	M12	70	100	
466151	38	M12	100	50	
466152	48	M8	25	200	
466153	48	M8	40	200	
466154	48	M8	55	150	
466155	48	M8	70	150	
466156	48	M8	100	100	
466157	48	M10	25	200	
466158	48	M10	40	150	
466159	48	M10	55	100	
466160	48	M10	70	100	
466161	48	M10	100	50	
466162	48	M12	25	150	
466163	48	M12	40	100	
466164	48	M12	55	100	
466165	48	M12	70	50	
466166	48	M12	100	50	

Metric

Item No.	Thread	Ø Base	Stud Length	Bulk Pack Qty.
462184	M6	32.5	25.0	500
110728	M8	25.0	12.0	100
110732	M8	25.0	25.0	100
110729	M8	32.0	12.0	100
110733	M8	32.0	25.0	100
110730	M8	38.0	12.0	100
110734	M8	38.0	25.0	100
110731	M8	47.5	12.0	100
110735	M8	47.5	25.0	100
110736	M10	25.0	15.0	100
110740	M10	25.0	38.0	100
110744	M10	25.0	50.0	100
110737	M10	32.0	15.0	100
110741	M10	32.0	38.0	100
110745	M10	32.0	50.0	100
110738	M10	38.0	15.0	100
110742	M10	38.0	38.0	100
110746	M10	38.0	50.0	100
110739	M10	47.5	15.0	100
110743	M10	47.5	38.0	100
110747	M10	47.5	50.0	100

ADJUSTABLE FEET



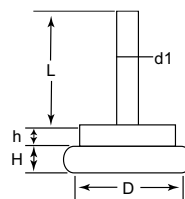
AFH Series Steel Based Adjustable Feet

Specifications:

- Material: Low-Carbon Steel Stud with Zinc-Plated Finish and Nickel-Plated Shell

Features:

- Economic leveler ideal for uneven surfaces
- Steel shell base provides a smooth non-skid surface
- Excellent for leveling cabinets, office furniture and light-duty machines
- Polymer cushion provided shock absorption
- Attractive chrome finish



Item No.	D (Base)		H (Height)		L		d1 (Thread)	Bulk Pack Qty.
	in	mm	in	mm	in	mm		
AFH1010A	0.748	19.00	0.236	5.94	0.650	16.51	1/4 - 20	400
AFH1015A	0.748	19.00	0.236	5.94	1.000	25.40	1/4 - 20	360
AFH1020A	0.866	22.00	0.236	5.94	0.650	16.51	1/4 - 20	320
AFH1025A	0.866	22.00	0.236	5.94	1.500	38.10	1/4 - 20	300
AFH1030A	0.945	24.00	0.236	5.94	0.650	16.51	1/4 - 20	240
AFH1035A	0.945	24.00	0.236	5.94	1.500	38.10	1/4 - 20	220
AFH1040A	1.063	27.00	0.236	5.94	1.000	25.40	1/4 - 20	192
AFH1045A	1.063	27.00	0.236	5.94	2.000	50.80	1/4 - 20	172

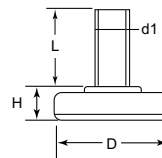
AFB Series Nylon Based Adjustable Feet

Specifications:

- Material: Nylon Base, Low-Carbon Steel Stud with Zinc-Plated Finish and Nickel-Plated Shell
- Color: Natural Nylon Base with Nickel-Plated Shell

Features:

- Economic leveler ideal for uneven surfaces
- Nylon base provides a smooth non-abrasive surface
- Excellent for leveling cabinets, office furniture and light-duty machines



Item No.	D (Base)		H (Height)		L		d1 (Thread)	Bulk Pack Qty.
	in	mm	in	mm	in	mm		
AFB1010A	1.000	25.40	0.438	11.11	1.000	25.40	1/4 - 20	400
AFB1015A	1.000	25.40	0.438	11.11	2.000	50.80	1/4 - 20	360
AFB1020A	1.375	34.93	0.594	15.08	1.000	25.40	3/8 - 16	200
AFB1025A	1.375	34.93	0.594	15.08	2.000	50.80	3/8 - 16	180

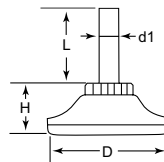
AFD Series Nylon Based With Hex Adjustable Feet

Specifications:

- Material: Nylon Base, Low-Carbon Steel Stud with Zinc-Plated Finish and Nickel-Plated Shell
- Color: Natural Nylon Base with Nickel-Plated Shell

Features:

- Integral hexagonal nut allows adjustment under load
- Nylon base provides a smooth non-abrasive surface
- Excellent for leveling cabinets, office furniture and light-duty machines
- Attractive nickel finish



Item No.	D (Base)		H (Height)		L		d1 (Thread)	Bulk Pack Qty.
	in	mm	in	mm	in	mm		
AFD1010A	1.300	33.02	0.625	15.88	1.000	25.40	3/8 - 16	300
AFD1020A	1.750	44.45	0.688	17.46	1.000	25.40	3/8 - 16	300
AFD1025A	1.750	44.45	0.688	17.46	2.000	50.80	3/8 - 16	280

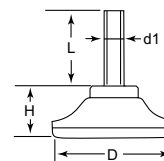
AFR Series Nylon Based Adjustable Feet

Specifications:

- Material: Nylon Base, Low-Carbon Steel Stud With Zinc-Plated Finish and Nickel-Plated Shell
- Color: Natural Nylon Base with Nickel-Plated Shell

Features:

- Economic leveler ideal for uneven surfaces
- Nylon base provides a smooth non-abrasive surface
- Excellent for leveling cabinets, office furniture and light-duty machines



Item No.	D (Base)		H (Height)		L		d1 (Thread)	Bulk Pack Qty.
	in	mm	in	mm	in	mm		
AFR1010A	1.125	28.58	0.438	11.11	1.000	25.40	1/4 - 20	400
AFR1015A	1.125	28.58	0.438	11.11	2.000	50.80	1/4 - 20	360
AFR1020A	1.125	28.58	0.438	11.11	1.000	25.40	5/16 - 18	300
AFR1025A	1.125	28.58	0.438	11.11	2.000	50.80	5/16 - 18	280

Item No.	D (Base)		H (Height)		L		d1 (Thread)	Bulk Pack Qty.
	in	mm	in	mm	in	mm		
AFR1030A	1.300	33.02	0.500	12.70	1.000	25.40	3/8 - 16	240
AFR1035A	1.300	33.02	0.500	12.70	2.000	50.80	3/8 - 16	220
AFR1040A	1.750	44.45	0.531	13.49	1.000	25.40	3/8 - 16	200
AFR1045A	1.750	44.45	0.531	13.49	2.000	50.80	3/8 - 16	180



BASE CAPS / RIVET FEET

MBC Series Glide Base Caps



Specifications:

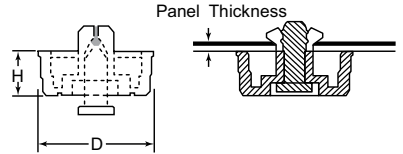
- Material: See Table
- Color: Natural

Features:

- Low profile
- Effectively encapsulates standard metal base glides

Item No.	Fits Base Cap OD		Material	Bulk Pack Qty.
	in	mm		
MBC1200A	0.875	22.2	Nylon	5000
MBC1210A	1.000	25.4	LDPE	4000
MBC1220A	1.062	27.0	Nylon	4000
MBC1230A	1.200	30.5	LDPE	3000
MBC1240A	1.218	31.0	Nylon	3000
MBC1250A	1.250	31.8	LDPE	2500
MBC1260A	1.250	31.8	Nylon	2500

FF Series Fast Foot



Specifications:

- Material: TPR over Nylon
- Flame Class: UL94 HB
- Color: Black

Item No.	Ø		Panel Thickness		D		H		Bulk Pack Qty.
	in	mm	in	mm	in	mm	in	mm	
FF-001B	0.199	5.1	0.039 - 0.091	1.0 - 2.3	0.950	24.0	0.551	14.0	100
FF-003-P3X5.5B	0.124	3.2	0.031 - 0.071	0.8 - 1.8	0.560	14.2	0.217	5.5	100
FF-004B	0.199	5.1	0.039 - 0.091	1.0 - 2.3	0.790	20.0	0.394	10.0	100
FF-005-P4X5B	0.163	4.2	0.039 - 0.091	0.8 - 1.8	0.830	21.0	0.165	4.2	100
FF-005-P4X6B	0.163	4.2	0.071 - 0.111	1.8 - 2.8	0.830	21.0	0.165	4.2	100
FF-005-P4X7B	0.163	4.2	0.114 - 0.146	2.9 - 3.7	0.830	21.0	0.165	4.2	100
FF-005-P4X8B	0.163	4.2	0.150 - 0.189	3.8 - 4.8	0.830	21.0	0.165	4.2	100
FF-006-P4X6B	0.163	4.2	0.024 - 0.039	0.6 - 1.0	0.590	15.0	0.236	6.0	100
FF-006-P4X7B	0.163	4.2	0.039 - 0.079	1.0 - 2.0	0.590	15.0	0.236	6.0	100
FF-006-P4X8B	0.163	4.2	0.079 - 0.118	2.0 - 3.1	0.590	15.0	0.236	6.0	100
FF-006-P5X6.5B	0.203	5.2	0.031 - 0.047	0.8 - 1.2	0.590	15.0	0.236	6.0	100
FF-006-P5X7.5B	0.203	5.2	0.051 - 0.091	1.3 - 2.3	0.590	15.0	0.236	6.0	100
FF-008-P4X6B	0.163	4.2	0.031 - 0.071	0.8 - 1.8	0.830	21.0	0.236	6.0	100
FF-008-P4X7B	0.163	4.2	0.075 - 0.110	1.9 - 2.8	0.830	21.0	0.236	6.0	100
FF-008-P4X8B	0.163	4.2	0.114 - 0.157	2.9 - 4.0	0.830	21.0	0.236	6.0	100
FF-009-P4X6B	0.163	4.2	0.000 - 0.031	0.0 - 0.8	0.830	21.0	0.315	8.0	100
FF-009-P4X7B	0.163	4.2	0.031 - 0.079	0.8 - 2.0	0.830	21.0	0.315	8.0	100
FF-009-P4X8B	0.163	4.2	0.083 - 0.118	2.1 - 3.0	0.830	21.0	0.315	8.0	100
FF-010-P4X7B	0.163	4.2	0.039 - 0.079	1.0 - 2.0	0.590	15.0	0.354	9.0	100
FF-010-P4X8B	0.163	4.2	0.079 - 0.118	2.0 - 3.1	0.590	15.0	0.354	9.0	100
FF-13-P3.5X4.5B	0.144	3.7	0.020 - 0.047	0.5 - 1.2	0.430	10.8	0.157	4.0	100
FF-13-P3.5X5.5B	0.144	3.7	0.047 - 0.079	1.2 - 2.0	0.430	10.8	0.157	4.0	100
FF-13-P3.5X6.0B	0.144	3.7	0.059 - 0.087	1.5 - 2.2	0.430	10.8	0.157	4.0	100
FF-13-P3.5X7.0B	0.144	3.7	0.098 - 0.126	2.5 - 3.2	0.430	10.8	0.157	4.0	100

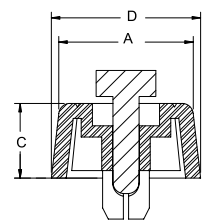
SFF Series Soft Fast Foot

Specifications:

- Material: Foot: UL94 HB TPE, 86 Shore A
- Pin: Polypropylene
- Color: Black

Features:

- Rivet is pushed in, locking foot in place
- Prevents surface damage with anti-skid and scratch resistant properties
- Made of abrasion resistant rubber to help cushion and provide vibration control
- High shear strength



Item No.	Hole Ø		Panel Thickness		A Ref		C Ref		D		Bulk Pack Qty.
	in	mm	in	mm	in	mm	in	mm	in	mm	
SFF-018	0.305	7.75	0.031 - 0.059	0.8 - 1.5	0.710	18.0	0.390	10.0	0.790	20.0	100
SFF-021	0.305	7.75	0.197 - 0.315	5.0 - 8.0	0.790	20.0	0.240	6.0	0.830	21.0	100
SFF-023	0.305	7.75	0.031 - 0.059	0.8 - 1.5	0.910	23.0	0.200	5.0	0.980	25.0	100
SFF-028	0.305	7.75	0.031 - 0.059	0.8 - 1.5	0.710	18.0	0.590	15.0	0.790	20.0	100

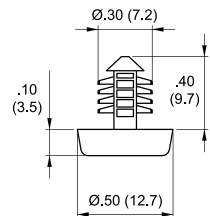
FBR Series Foot, Fir-Tree Mount

Specifications:

- Material: Rivet: UL94 V-2 Nylon 6/6
- Foot: TPE
- Color: Black

Features:

- Rigid nylon fir-tree mount provides exceptional retention strength
- Rubber foot provides skid resistance and vibration control



Item No.	Hole Ø		Min. Panel Thickness		Bulk Pack Qty.
	in	mm	in	mm	
FBR-1	0.268	6.8	0.394	10.0	1000



STEM BUMPERS

BPM Series Pull Mount Bumper

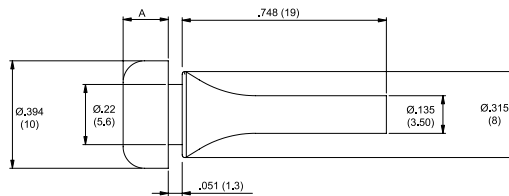


Specifications:

- Material: Silicone Rubber, 65 Shore A
- Color: Black

Features:

- Pulled from the inside of chassis
- High temperature silicone helps to cushion and prevent skidding



Item No.	Hole Ø		Panel Thickness		A		Bulk Pack Qty.
	in	mm	in	mm	in	mm	
BPM-2	0.240 - 0.250	6.00 - 6.35	0.059	1.5	0.165	4.2	1000
BPM-3	0.240 - 0.250	6.00 - 6.35	0.059	1.5	0.196	5.0	1000

BAB Series Break-Away Bumper

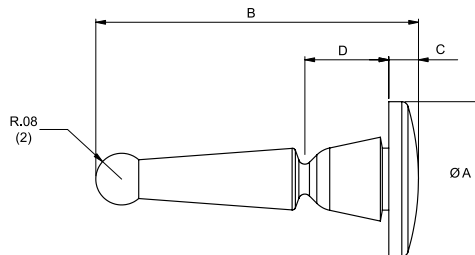


Specifications:

- Material: See Table
- Color: Black

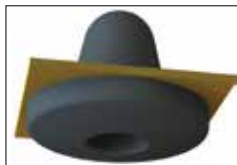
Features:

- Designed to be pulled from the inside of the chassis
- Mounting tab designed to break away after assembly to save space
- Silicone is good for high temperature applications



Item No.	Hole Ø		Panel Thickness		A Ø		B		C		D		Material	Bulk Pack Qty.
	in	mm	in	mm	in	mm	in	mm	in	mm	in	mm		
BAB-1	0.197 - 0.212	5.0 - 5.4	0.024 - 0.031	0.6 - 0.8	0.470	12.0	0.980	25.0	0.090	2.3	0.260	6.5	Silicone Rubber, 40 Shore A	1000
BAB-2	0.197 - 0.212	5.0 - 5.4	0.024 - 0.031	0.6 - 0.8	0.470	12.0	0.980	25.0	0.090	2.3	0.260	6.5	Silicone Rubber, 50 Shore A	1000
BAB-3	0.185 - 0.197	4.7 - 5.0	0.020	0.5	0.390	10.0	0.790	20.0	0.080	2.0	0.160	4.3	Silicone Rubber, 50 Shore A	1000

BIB Series Blind Install Bumper

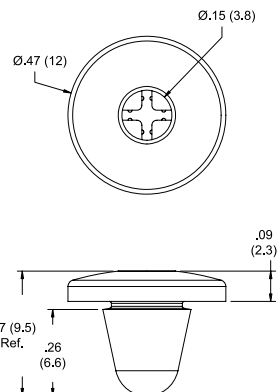


Specifications:

- Material: Silicone Rubber, 45 Shore A
- Color: Black

Features:

- Installed from the outside of the chassis
- Cross that is molded into the head allows quick installation with a #1 phillips head screwdriver or 1/8 (3.2) Ø or smaller blunt end rod
- May be used as an alternate to the BAB series seen above



Item No.	Hole Ø		Panel Thickness		Bulk Pack Qty.
	in	mm	in	mm	
BIB-1	0.197 - 0.212	5.0 - 5.4	0.024 - 0.031	1.6 - 0.8	1000



STEM BUMPERS

POF Series Push On Feet

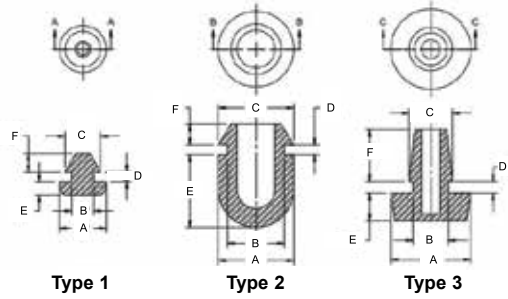


Specifications:

- Material: UL94 HB TPE
- Color: Black

Features:

- Easily mounted by pushing into chassis



Item No.	Hole Ø		Panel Thickness		A Ø		B Ø		C Ø		D		E		F Ref		Type	Bulk Pack Qty.
	in	mm	in	mm	in	mm	in	mm	in	mm	in	mm	in	mm	in	mm		
POF-40022	0.146 - 0.150	3.7 - 3.8	0.126	3.2	0.31	7.9	0.126	3.2	0.17	4.4	0.13	3.3	0.06	1.6	0.13	3.3	1	100
POF-40048	0.177 - 0.181	4.5 - 4.6	0.059	1.5	0.31	7.9	0.146	3.7	0.24	6.1	0.06	1.6	0.09	2.3	0.12	3.0	1	100
POF-40059	0.374 - 0.378	9.5 - 9.6	0.059	1.5	0.50	12.7	0.374	9.5	0.50	12.7	0.06	1.6	0.48	12.2	0.14	3.6	2	100
POF-50185	0.236 - 0.240	6 - 6.1	0.075	1.9	0.53	13.4	0.236	6.0	0.29	7.3	0.08	2.0	0.18	4.6	0.34	8.6	3	100
POF-12664	0.276 - 0.280	7 - 7.1	0.047	1.2	0.62	15.7	0.276	7.0	0.34	8.6	0.05	1.3	0.20	5.1	0.16	4.1	3	100

GRF Series Add Push-On Feet

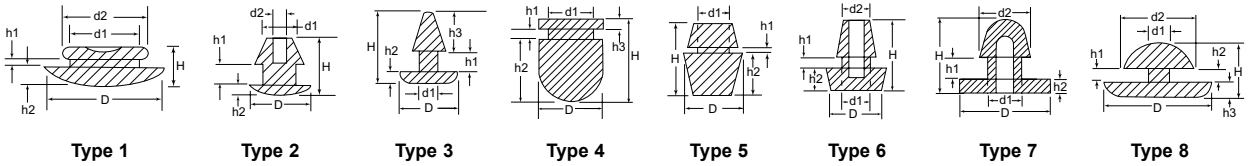
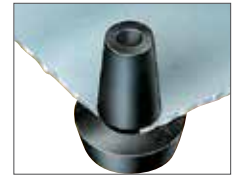


Specifications:

- Material: Flexible PVC
- Color: Black

Features:

- Designed for use on metal or plastic housings and cases
- Simply push into punched or drilled holes



Item No.	Type	Ø D		Ø d1		Ø d2		H		h1		h2		h3		Bulk Pack Qty.
		in	mm	in	mm	in	mm	in	mm	in	mm	in	mm	in	mm	
GRF16010A	1	0.606	15.39	0.386	9.80	0.500	12.70	0.276	7.01	0.063	1.60	0.106	2.69	—	—	10000
GRF17409A	1	0.748	19.00	0.472	12.00	0.516	13.11	0.256	6.50	0.031	0.79	0.126	3.20	—	—	10000
GRF17412A	1	0.748	19.00	0.504	12.80	0.626	15.90	0.295	7.49	0.063	1.60	0.126	3.20	—	—	7000
GRF24006A	2	0.406	10.31	0.177	4.50	0.087	2.21	0.299	7.59	0.063	1.60	0.079	2.01	—	—	5000
GRF33106A	3	0.311	7.90	0.126	3.20	—	—	0.327	8.31	0.126	3.20	0.063	1.60	0.138	3.51	10000
GRF33109A	3	0.311	7.90	0.146	3.71	—	—	0.276	7.01	0.063	1.60	0.094	2.39	0.118	3.00	10000
GRF45050A	4	0.492	12.50	0.374	9.50	—	—	0.669	16.99	0.063	1.60	0.472	12.00	0.138	3.51	10000
GRF54131A	5	0.429	10.90	0.272	6.91	—	—	0.504	12.80	0.028	0.71	0.319	8.10	—	—	10000
GRF64718A	6	0.472	12.00	0.236	6.00	0.228	5.79	0.598	15.19	0.083	2.11	0.181	4.60	—	—	10000
GRF65919A	2	0.622	15.80	0.268	6.81	0.157	3.99	0.382	9.70	0.059	1.50	0.197	5.00	—	—	10000
GRF79815A	7	0.996	25.30	0.492	12.50	0.602	15.29	0.787	19.99	0.197	5.00	0.157	3.99	—	—	2000
GRF86713A	8	0.689	17.50	0.437	11.10	0.524	13.31	0.394	10.01	0.102	2.59	0.157	3.99	0.157	3.99	10000

BDH Series Domed Split Stem Bumper

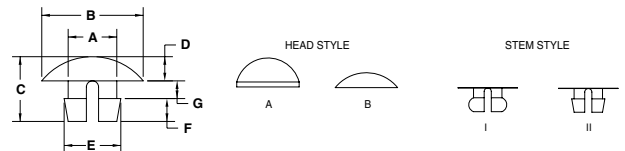


Specifications:

- Material: Nylon 6
- Color: Natural

Features:

- Domed head split bumpers are produced with a split-stem portion to make insertion easy and removal difficult
- The domed head makes them ideal for use as bumpers



Item No.	Ø A		Ø B		C		D		E		F		G		Stem Style	Head Style	Bulk Pack Qty.
	in	mm	in	mm	in	mm	in	mm	in	mm	in	mm	in	mm			
BDH005A	0.109	2.77	0.250	6.35	0.203	5.16	0.093	2.36	0.125	3.18	0.046	1.17	0.063	1.60	I	A	40000
BDH010A	0.125	3.18	0.375	9.53	0.307	7.80	0.046	1.17	0.150	3.81	0.130	3.30	0.130	3.30	II	A	30000
BDH020A	0.156	3.96	0.375	9.53	0.265	6.73	0.093	2.36	0.173	4.39	0.093	2.36	0.093	2.36	II	B	20000
BDH025A	0.187	4.75	0.344	8.73	0.203	5.16	0.050	1.27	0.218	5.54	0.083	2.11	0.070	1.78	II	B	35000
BDH030A	0.187	4.75	0.390	9.91	0.250	6.35	0.093	2.36	0.218	5.54	0.088	2.24	0.068	1.73	II	B	24000
BDH040A	0.210	5.33	0.375	9.53	0.343	8.71	0.063	1.60	0.243	6.17	0.125	3.18	0.156	3.96	II	B	20000

STEM BUMPERS



SOF Series Screw Mount Feet

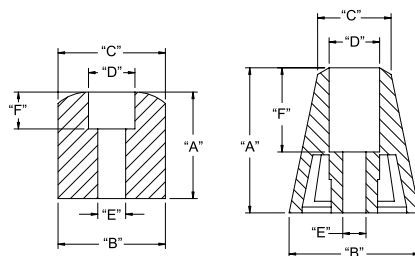


Fig. 1

Fig. 2

Specifications:

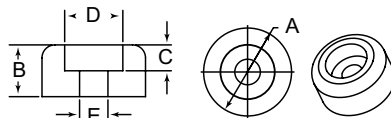
- Material: Neoprene Rubber
- Color: Black

Features:

- Securely mounted with a screw
- Provides excellent skid resistance

Item No.	Ø A		Ø B		Ø C Ref.		Ø D		Ø E		Ø F		Figure	Bulk Pack Qty.
	in	mm	in	mm	in	mm	in	mm	in	mm	in	mm		
SOF-15129	0.280	7.1	0.630	15.9	0.540	13.8	0.310	8.0	0.130	3.2	0.160	4.0	1	100
SOF-15140	0.370	9.5	0.690	17.5	—	—	0.310	8.0	0.160	4.0	0.200	5.2	2	100
SOF-15125	0.450	11.5	0.750	19.1	0.710	18.0	0.400	10.2	0.200	5.0	0.250	6.35	1	100
SOF-15111	0.600	15.25	0.750	19.1	0.500	12.7	0.310	8.0	0.160	4.0	0.190	4.0	2	100
SOF-15127	0.720	18.35	0.730	18.5	—	—	0.310	8.0	0.190	4.8	0.250	6.35	1	100
SOF-15126	0.980	25.0	0.890	22.5	0.500	12.7	0.340	8.7	0.160	4.0	0.570	14.5	2	100

BRR Series Screw on Bumper Feet

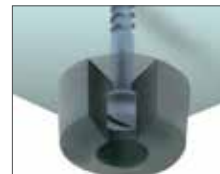


Specifications:

- Material: See Table
- Color: See Table

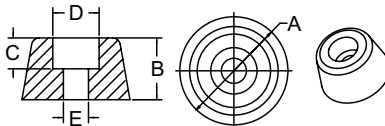
Features:

- Recessed bumpers are ideally suited for use as feet on radios, TV sets, house wares, small appliances and many other products
- They are fastened by means of a screw, bolt or rivet
- Can also be used as spacers or door stops
- Available in round, coved and tapered configurations



Item No.	Material	Color	Ø A		B		C		Ø D		E		Bulk Pack Qty.
			in	mm	in	mm	in	mm	in	mm	in	mm	
BRR015A	Nylon	Natural	0.500	12.70	0.375	9.53	0.063	1.59	0.391	9.92	0.190	4.83	12000
BRR015B	Nylon	Black	0.500	12.70	0.375	9.53	0.063	1.59	0.391	9.92	0.190	4.83	12000
BRR015C	LDPE	Black	0.500	12.70	0.375	9.53	0.063	1.59	0.391	9.92	0.190	4.83	12000
BRR025A	Nylon	Natural	0.625	15.88	0.500	12.70	0.250	6.35	0.343	8.71	0.187	4.75	5000
BRR025B	Nylon	Black	0.625	15.88	0.500	12.70	0.250	6.35	0.343	8.71	0.187	4.75	5000
BRR025C	LDPE	Black	0.625	15.88	0.500	12.70	0.250	6.35	0.343	8.71	0.187	4.75	5000
BRR030A	Nylon	Natural	0.750	19.05	0.312	7.92	0.130	3.30	0.437	11.10	0.280	7.11	5000
BRR030B	Nylon	Black	0.750	19.05	0.312	7.92	0.130	3.30	0.437	11.10	0.280	7.11	5000
BRR030C	LDPE	Black	0.750	19.05	0.312	7.92	0.130	3.30	0.437	11.10	0.280	7.11	5000
BRR055A	Nylon	Natural	1.000	25.40	0.500	12.70	0.250	6.35	0.563	14.29	0.266	6.75	3200
BRR055B	Nylon	Black	1.000	25.40	0.500	12.70	0.250	6.35	0.563	14.29	0.266	6.75	3200
BRR055C	LDPE	Black	1.000	25.40	0.500	12.70	0.250	6.35	0.563	14.29	0.266	6.75	3200

BTR Series Heavy Duty Screw on Bumper Feet



Specifications:

- Material: See Table
- Color: See Table

Features:

- They are fastened by means of a screw, bolt or rivet

Item No.	Material	Color	Ø A		B		C		Ø D		E		Bulk Pack Qty.
			in	mm	in	mm	in	mm	in	mm	in	mm	
BTR020A	Nylon	Natural	0.750	19.05	0.625	15.88	0.437	11.10	0.375	9.53	0.156	3.96	5000
BTR020B	Nylon	Black	0.750	19.05	0.625	15.88	0.437	11.10	0.375	9.53	0.156	3.96	5000
BTR020C	LDPE	Natural	0.750	19.05	0.625	15.88	0.437	11.10	0.375	9.53	0.156	3.96	5000
BTR020D	LDPE	Black	0.750	19.05	0.625	15.88	0.437	11.10	0.375	9.53	0.156	3.96	5000
BTR040A	Nylon	Natural	0.750	19.05	0.750	19.05	0.470	11.94	0.440	11.18	0.196	4.98	5000
BTR040B	Nylon	Black	0.750	19.05	0.750	19.05	0.470	11.94	0.440	11.18	0.196	4.98	5000
BTR040C	LDPE	Natural	0.750	19.05	0.750	19.05	0.470	11.94	0.440	11.18	0.196	4.98	5000
BTR040D	LDPE	Black	0.750	19.05	0.750	19.05	0.470	11.94	0.440	11.18	0.196	4.98	5000



STEM BUMPERS

BST & BCS Series Standard & Coved Stem Bumpers

Specifications:

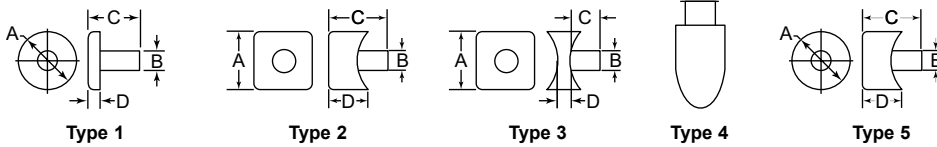
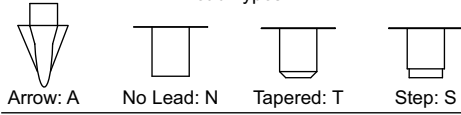
- Material: Nylon
- Color: Natural

Features:

- Used to protect surfaces from contact
- Ideal for sheet metal, wood and tubing



Lead Types



Item No.	Style	A (Base Size)		Ø B		C		D		Bulk Pack Qty.
		in	mm	in	mm	in	mm	in	mm	
BST015A	1A	0.437	1.1	0.125	3.18	0.546	13.87	0.125	3.18	29000
BST027A	1A	0.500	2.70	0.200	5.08	0.607	15.42	0.063	1.6	20000
BST005A	1N	0.362	0.19	0.200	5.08	0.250	6.35	0.150	3.81	16000
BST025A	1N	0.500	12.70	0.190	4.83	0.325	8.26	0.150	3.81	8000
BST010A	1S	0.375	9.53	0.187	4.75	0.600	15.24	0.060	7.62	15000
BST020A	1S	0.500	12.70	0.225	4.75	0.781	19.84	0.296	7.52	8000
BST030A	1S	0.500	12.70	0.250	6.35	0.640	16.26	0.188	4.78	5000
BST040A	1S	0.500	12.70	0.335	8.51	0.858	21.79	0.435	11.05	6500
BST072A	1S	0.750	19.05	0.255	6.48	0.400	10.16	0.187	4.75	7000
BST100A	1S	0.125	28.58	0.320	8.13	0.495	12.57	0.165	4.19	5000
BST140A	1S	0.250	31.75	0.375	9.53	0.840	21.37	0.380	9.65	2300
BST075C	1T	0.750	19.05	0.250	6.35	0.687	17.45	0.187	4.75	10000
BST095A	1T	1.000	25.40	0.250	6.35	0.656	16.66	0.156	3.96	7000
BST115A	2S	0.750 x 1.00	19.05 x 25.40	0.250	6.35	0.570	14.48	0.120	3.05	5500
BST110A	3S	0.750 x 0.750	19.05 x 19.05	0.268	6.81	0.490	12.45	0.090	2.28	5000
BST135A	3S	0.620 x 0.620	15.75 x 15.75	0.250	6.35	0.450	11.43	0.128	3.05	5500
BST012A	4N	0.375	9.53	0.260	6.6	0.880	22.35	0.635	16.13	10000
BCS030C	5S	0.750	19.05	0.255	6.48	0.360	9.14	0.187	4.75	8000
BST070A	5S	0.980	24.89	0.250	6.35	0.750	19.05	0.500	12.7	35000
BST150A	5T	0.750	19.05	0.268	6.81	0.710	18.03	0.187	4.75	8000

BCR Series Coved Screw On Bumper Feet

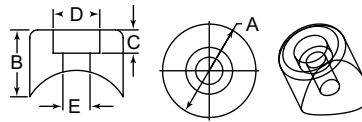


Specifications:

- Material: See Table
- Color: See Table

Features:

- Coved surface fits matching round tubing
- Can be used as a glide, bumper or spacer



Item No.	Material	Color	Tube Ø	Ø A	B	C	Ø D	Ø E	Bulk Pack Qty.
			in	in	in	in	in	in	
BCR010A	Nylon	Natural	0.750	0.805	1.000	0.250	0.370	0.215	1500
BCR020A	Nylon	Natural	1.000	0.835	0.675	0.280	0.645	0.270	5000
BCR040A	Nylon	Natural	1.000	0.990	0.850	0.260	0.515	0.240	2800
BCR040B	Nylon	Black	1.000	0.990	0.850	0.260	0.515	0.240	2800
BCR050A	Nylon	Natural	1.000	1.000	0.812	0.312	0.500	0.218	3000
BCR050B	Nylon	Black	1.000	1.000	0.812	0.312	0.500	0.218	3000
BCR050C	LDPE	Black	1.000	1.000	0.812	0.312	0.500	0.218	3000
BCR060A	Nylon	Natural	1.000	1.000	0.828	0.265	0.484	0.305	3000
BCR060B	Nylon	Black	1.000	1.000	0.828	0.265	0.484	0.305	3000
BCR060C	LDPE	Black	1.000	1.000	0.828	0.265	0.484	0.305	3000

STEM BUMPERS & WELD CAPS



BFS, BFA & SCP Series Flat Headed Stem Bumpers

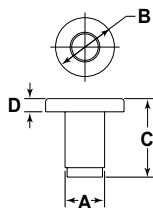


Specifications:

- Material: See Table
- Color: See Table

Features:

- Flat head stem bumpers are designed to rest against a flat or tangent surface
- The step-type or tapered lead on the stem makes insertion easy, and the press fit on the shank holds the bumper securely
- Applications include use as glides, bumpers, closures, slides and stops on many products



Lead Styles



Tapered=T



Step=S



Round=R

Item No.	Material	Color	Ø A		Ø B		C		D		Lead Style	Bulk Pack Qty.
			in	mm	in	mm	in	mm	in	mm		
BFS010A	Nylon	Natural	0.125	3.18	0.406	10.31	0.297	7.54	0.063	1.60	T	15000
BFS015A	Nylon	Natural	0.250	6.35	0.500	12.70	0.594	15.09	0.250	6.35	S	11000
BFS020A	Nylon	Natural	0.156	3.96	0.307	7.80	0.173	4.39	0.042	1.07	R	10000
BFS035A	Nylon	Natural	0.187	4.70	0.500	12.70	0.313	7.95	0.125	3.18	T	9000
BFS060A	Nylon	Natural	0.250	6.35	0.500	12.70	0.438	11.13	0.156	3.96	R	15000
BFS080A	Nylon	Natural	0.260	6.60	0.750	19.05	0.437	11.10	0.094	2.39	S	9000
BFS100A	Nylon	Natural	0.320	8.13	1.000	25.40	0.415	10.54	0.180	4.57	S	7000
BFS110A	Nylon	Natural	0.380	9.65	1.460	37.08	0.415	10.54	0.188	4.78	S	3000
BFA010A	LDPE	Black	0.125	3.18	0.406	10.31	0.297	7.54	0.063	1.60	T	15000
BFA015A	LDPE	Black	0.250	6.35	0.500	12.70	0.594	15.09	0.250	6.35	S	11000
BFA035A	LDPE	Black	0.187	4.70	0.500	12.70	0.313	7.95	0.125	3.18	T	9000
BFA060A	LDPE	Black	0.250	6.35	0.500	12.70	0.438	11.13	0.156	3.96	R	15000
BFA080A	LDPE	Black	0.260	6.60	0.750	19.05	0.437	11.10	0.094	2.39	S	9000
BFA100A	LDPE	Black	0.320	8.13	1.000	25.40	0.415	10.54	0.180	4.57	S	7000
BFA110A	LDPE	Black	0.380	9.65	1.460	37.08	0.415	10.54	0.188	4.78	S	3000
SCP2520B	HDPE	Black	0.252	6.40	0.748	19.00	0.715	18.16	0.150	3.81	N	5000

WCG Series Weld Cups for Wrought Iron

Specifications:

- Material: High-Density Polyethylene
- Color: Natural

Features:

- Center air hole
- Fits standard steel weld cups



Style 1



Style 2

Item No.	ID of Weld Cup		Hole Ø		Style	Bulk Pack Qty.
	in	mm	in	mm		
WCG1000A	1.415	35.95	0.094	2.40	1	1800
WCG1100A	1.250	31.80	0.094	2.40	1	2500
WCG1200A	1.420	36.09	0.093	2.37	2	1800
WCG1300B	1.250	31.80	0.094	2.40	2	2800

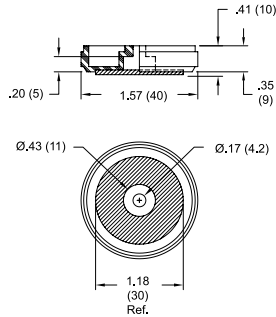
ON A ROLL

Browse our large selection of casters on pages 313 - 317.

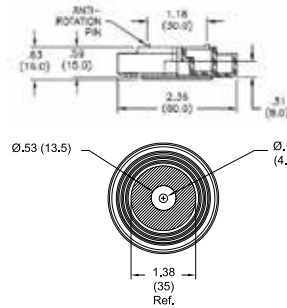


BUMPERS

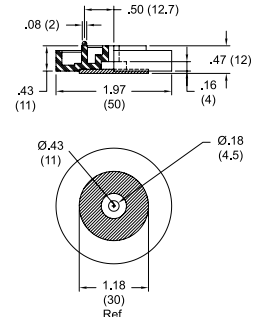
BF Series Big Screw Mount Foot



BF-1001



BF-1002



BF-1005

Specifications:

- Foot Material: UL94 HB ABS
- Pad Material: Nylon Fiber
- Color: Black

Features:

- Ideal for heavy duty applications
- Mounted securely with a #8 (M4) pan head screw
- Nylon fiber pad material helps prevent abrasion

Item No.	Load Capacity		Bulk Pack Qty.
	lbs	kg	
BF-1001	22	10	100
BF-1002	22	10	100
BF-1005	22	10	100

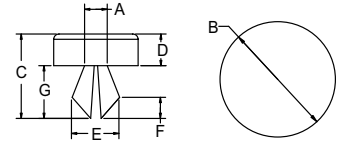
BSS Series Flat Head Split Stem Bumpers

Specifications:

- Material: Nylon
- Color: Natural

Features:

- Produced with a split stem portion and undercut to make insertion easy and removal difficult
- Used as panel plugs and bumpers



Item No.	Hole Ø		Ø A		B		C		D		E		F		G		Bulk Pack Qty.
	in	mm	in	mm	in	mm	in	mm	in	mm	in	mm	in	mm	in	mm	
BSS010A	0.156	3.96	0.152	3.86	0.500	12.70	0.312	7.92	0.063	1.60	0.166	4.22	0.063	1.60	0.187	4.75	14000
BSS015A	0.265	6.73	0.260	6.60	0.750	19.00	0.625	15.88	0.187	4.75	0.290	7.37	0.125	3.18	0.312	7.92	10500

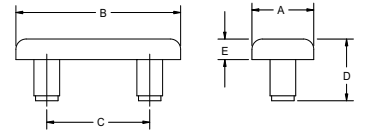
BDS Series Double Stem Bumpers

Specifications:

- Material: Nylon 6
- Color: Natural

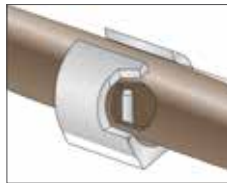
Features:

- Designed for applications requiring a bumper with a large head area



Item No.	Hole Ø		A		B		C		D		E		Bulk Pack Qty.
	in	mm	in	mm	in	mm	in	mm	in	mm	in	mm	
BDS010A	0.187	4.75	0.375	9.53	1.000	25.40	0.625	15.88	0.500	12.70	0.125	3.18	3500

SG Series Snap-In Saddle Glides and Feet



Specifications:

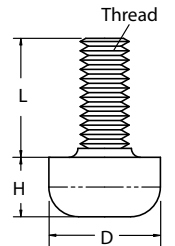
- Materials: See Table
- Color: See Table

Features:

- Designed to snap onto horizontal legs of chairs, tables and stands

Item No.	Tube Size		Material	Color	Bulk Pack Qty.
	in	mm			
SG1000B	0.625	16.01	K-Resin	Clear	4000
SG1050A	0.875	22.23	ABS	Black	2500
SG1100A	1.000	25.40	ABS	Black	1400

TB Series Threaded Insert Bumper



Specifications:

- Material: IIR; 40-50 Shore A
- Stem: Brass

Features:

- Can be used as a leveling device or bumper for small equipment
- Non-corrosive stud

Item No.	Thread	H		L		D		Bulk Pack Qty.
		in	mm	in	mm	in	mm	
TB-1	#6-32	0.200	5.1	0.400	10.2	0.380	9.5	100
TB-2	#8-32	0.200	5.1	0.400	10.2	0.380	9.5	100
TB-3	M3	0.200	5.1	0.400	10.2	0.380	9.5	100
TB-4	M4	0.200	5.1	0.400	10.2	0.380	9.5	100

BUMPERS & STICK-ON FEET**RBS/STF Series
Bumpers/Stick-On Feet**

Specifications:

- Material: Polyurethane
- Adhesive: Rubber
- Color: See Table
- Application Temperature: 65°F to 150°F

Features:

- Will not tarnish, scratch, or discolor any surface
- Easy to use - simply peel & stick
- Adhesion works best on a smooth, clean & dry surface
- Commonly used as rubber feet, cabinet stoppers, door stops & surface protectors

**Cylindrical
On A Pad**

Item No.		Ø		Height		Pieces/Pad	Bulk Pack Qty.
Clear	Black	in	mm	in	mm		
RBS-34	RBS-34BK	0.375	9.5	0.125	3.2	300	300
RBS-35	RBS-35BK	0.375	9.5	0.190	4.8	50	200
RBS-5	RBS-5BK	0.500	12.7	0.060	1.5	200	200
RBS-1	RBS-1BK	0.500	12.7	0.140	3.6	200	200
RBS-6	RBS-6BK	0.500	12.7	0.250	6.4	50	200
RBS-11	RBS-11BK	0.650	15.7	0.400	10.2	128	128
RBS-44	RBS-44BK	0.750	19.1	0.160	4.1	98	98
RBS-41	RBS-41BK	0.780	19.8	0.200	5.1	84	84
RBS-24	RBS-24BK	0.810	20.6	0.120	3.0	72	72
RBS-72	RBS-72BK	1.240	31.5	0.100	2.5	32	32

**Hemisphere
On A Pad**

Item No.		Ø		Height		Pieces/Pad	Bulk Pack Qty.
Clear	Black	in	mm	in	mm		
RBS-40	RBS-40BK	0.250	6.4	0.062	1.6	578	578
STFHEM250087A	STFHEM250087B	0.250	6.4	0.087	2.2	450	450
RBS-27	RBS-27BK	0.312	7.9	0.085	2.2	450	450
RBS-7	RBS-7BK	0.335	8.5	0.085	2.2	450	450
RBS-12	RBS-12BK	0.375	9.5	0.150	3.8	72	72
RBS-22	RBS-22BK	0.375	9.5	0.221	5.6	300	300
RBS-10	—	0.390	9.9	0.120	3.0	288	288
RBS-2	RBS-2BK	0.440	11.2	0.200	5.1	242	242
RBS-15	RBS-15BK	0.620	15.7	0.310	7.9	128	128
RBS-8	RBS-8BK	0.720	18.3	0.380	9.7	98	98
RBS-37	RBS-37BK	0.720	18.3	0.560	14.2	100	100
RBS-39	RBS-39BK	0.750	19.1	0.075	1.9	98	84

**Square
On A Pad**

Item No.		Ø		Height		Pieces/Pad	Bulk Pack Qty.
Clear	Black	in	mm	in	mm		
RBS-20	RBS-20BK	0.400	10.2	0.100	2.5	242	242
RBS-32R	RBS-32RBK	0.500	12.7	0.120	3.0	200	200
RBS-3R	RBS-3RBK	0.500	12.7	0.230	5.8	200	200
RBS-4	RBS-4BK	0.750	19.1	0.340	8.6	100	100
RBS-29	RBS-29BK	0.780	19.8	0.250	6.4	98	98
RBS-19	RBS-19BK	0.810	20.6	0.300	7.6	98	98
RBS-36	RBS-36BK	1.000	25.4	0.180	4.6	55	55

**BUMPERS & STICK ON FEET****RBS Series
Bumpers/Stick-On Feet (continued)****Round Recessed
On A Pad**

Item No.		Ø		Height		Pieces/Pad	Bulk Pack Qty.
Clear	Black	in	mm	in	mm		
RBS-18	RBS-18BK	0.500	12.7	0.140	3.6	200	200
RBS-17	RBS-17BK	0.880	22.4	0.400	10.2	72	72
RBS-30	RBS-30BK	1.800	45.7	0.600	15.2	100	100

**ASP Series
Anti Slip Pads****Round
On A Roll**

Specifications:

- Material: Polyethylene Foam
- High tack permanent adhesive

Item No.	Ø		Height		Pieces/Roll
	in	mm	in	mm	
ASPR-8-062	0.500	12.7	0.062	1.6	1000
ASPR-12-062	0.750	19.1	0.062	1.6	1000
ASPR-16-062	1.000	25.4	0.062	1.6	1000
ASPR-8-125	0.500	12.7	0.125	3.2	1000
ASPR-12-125	0.750	19.1	0.125	3.2	1000
ASPR-16-125	1.000	25.4	0.125	3.2	1000

**Square
On A Pad**

Item No.	Ø		Height		Pieces/Pad
	in	mm	in	mm	
ASPS-8-062	0.500	12.7	0.062	1.6	40
ASPS-12-062	0.750	19.1	0.062	1.6	20
ASPS-16-062	1.000	25.4	0.062	1.6	8
ASPS-8-125	0.500	12.7	0.125	3.2	40
ASPS-12-125	0.750	19.1	0.125	3.2	20
ASPS-16-125	1.000	25.4	0.125	3.2	8



END CAPS

**FREE
SAMPLES
AVAILABLE**

800 847 0486

www.essentracomponents.com

STAINLESS STEEL CASTERS



Stainless Steel with Swivel Plate



Specifications:

- Housing Material: Stainless Steel
- Wheel Material: See Table

Features:

- Resistant to corrosion and rust
- Typical applications include medical, autoclave operations or where wash down of equipment is required



Poly / Polypropylene Core

Polypropylene

TPR



Item No.	Wheel Specifications					Plate Specifications				Bulk Pack Qty.
	Wheel Diameter x Width in	Wheel Type	Capacity lbs	OAH in	Bearing	Swivel Radius in	Overall Size L x W in	Mouting Hole Width in	Ø Bolt Hole in	
1256091	3.5 x 1.25	Poly/Polypropylene Core	300	4.688	Two Piece Delrin	2.5	3.625 x 2.5	1.75	0.313	16
1256093	3.5 x 1.25	Poly/Polypropylene Core	350	4.688	Delrin	2.5	3.625 x 2.5	1.75	0.313	16
1256094	3.5 x 1.25	TPR	250	4.688	Two Piece Delrin	2.5	3.625 x 2.5	1.75	0.313	16
1256096	4 x 1.25	Poly/Polypropylene Core	350	5.125	Two Piece Delrin	2.5	3.625 x 2.5	1.75	0.313	16
1256098	4 x 1.25	Poly/Polypropylene Core	350	5.125	Two Piece Delrin	2.5	3.625 x 2.5	1.75	0.313	16
1256099	4 x 1.25	TPR	300	5.125	Two Piece Delrin	2.5	3.625 x 2.5	1.75	0.313	16
1256111	5 x 1.25	Polypropylene	350	6.188	Two Piece Delrin	3.0	3.625 x 2.5	1.75	0.313	16
1256113	5 x 1.25	Poly/Polypropylene Core	350	6.188	Two Piece Delrin	3.0	3.625 x 2.5	1.75	0.313	16
1256114	5 x 1.25	Poly/Polypropylene Core	325	6.188	Two Piece Delrin	3.0	3.625 x 2.5	1.75	0.313	16

Stainless Steel Swivel Plate with Brake



Urethane

Polyolefin

Guidelines to Help You Select the Correct Caster See Page 317

Item No.	Wheel Specifications					Plate Specifications				Bulk Pack Qty.
	Wheel Diameter x Width in	Wheel Type	Capacity lbs	OAH in	Bearing	Swivel Radius in	Overall Size L x W in	Mouting Hole Width in	Ø Bolt Hole in	
1256107	4 x 2	Polyolefin	900	5.625	Two Piece Delrin	1.438	4 x 4.5	2.625 to 3.000	0.375	8
1256108	4 x 2	Urethane	600	5.625	Two Piece Delrin	1.438	4 x 4.5	2.625 to 3.000	0.375	8
1256109	6 x 2	Urethane	375	5.625	Two Piece Delrin	1.438	4 x 4.5	2.625 to 3.000	0.375	8
1256116	5 x 2	Polyolefin	900	6.500	Two Piece Delrin	1.625	4 x 4.5	2.625 to 3.000	0.375	8
1256117	5 x 2	Urethane	900	6.500	Two Piece Delrin	1.625	4 x 4.5	2.625 to 3.000	0.375	8
1256118	5 x 2	Urethane	375	6.500	Two Piece Delrin	1.625	4 x 4.5	2.625 to 3.000	0.375	8
1256138	6 x 2	Urethane	900	7.500	Two Piece Delrin	1.875	4 x 4.5	2.625 to 3.000	0.375	8
1256139	6 x 2	Urethane	600	7.500	Two Piece Delrin	1.875	4 x 4.5	2.625 to 3.000	0.375	8
1256141	6 x 2	Polyolefin	900	7.500	Two Piece Delrin	1.875	4 x 4.5	2.625 to 3.000	0.375	8
1256169	8 x 2	Polyolefin	1200	9.500	Two Piece Delrin	2.375	4 x 4.5	2.625 to 3.000	0.375	8
1256170	8 x 2	Urethane	1000	9.500	Two Piece Delrin	2.375	4 x 4.5	2.625 to 3.000	0.375	8
1256171	6 x 2	Urethane	600	9.500	Two Piece Delrin	2.375	4 x 4.5	2.625 to 3.000	0.375	8

Stainless Steel Rigid Plate



Polypropylene

Poly / Polypropylene Core

TPR

Urethane

Soft Rubber

Polyolefin

Item No.	Wheel Specifications					Plate Specifications				Bulk Pack Qty.
	Wheel Diameter x Width in	Wheel Type	Capacity lbs	OAH in	Bearing	Swivel Radius in	Overall Size L x W in	Mouting Hole Width in	Ø Bolt Hole in	
1256192	3.5 x 1.25	Polypropylene	300	4.688	Two Piece Delrin	3 x 2.5	1.750	0.313	16	
1256194	3.5 x 1.25	Poly/Polypropylene Core	350	4.688	Delrin	3 x 2.5	1.750	0.313	16	
1256195	3.5 x 1.25	TPR	250	4.688	Two Piece Delrin	3 x 2.5	1.750	0.313	16	
1256198	4 x 1.25	Polypropylene	350	5.125	Two Piece Delrin	3.625 x 2.5	1.750	0.313	16	
1256200	4 x 1.25	Poly/Polypropylene Core	350	5.125	Two Piece Delrin	3.625 x 2.5	1.750	0.313	16	
1256201	4 x 1.25	TPR	300	5.125	Two Piece Delrin	3.625 x 2.5	1.750	0.313	16	
1256204	5 x 1.25	Polypropylene	350	6.188	Two Piece Delrin	3.625 x 2.5	1.750	0.313	16	
1256206	5 x 1.25	Polypropylene	350	6.188	Two Piece Delrin	3.625 x 2.5	1.750	0.313	16	
1256207	5 x 1.25	TPR	325	6.188	Two Piece Delrin	3.625 x 2.5	1.750	0.313	16	
1256213	4 x 2	Urethane	600	5.625	Two Piece Delrin	4 x 4.5	2.625 to 3.000	0.375	8	
1256214	4 x 2	Soft Rubber	350	5.625	Two Piece Delrin	4 x 4.5	2.625 to 3.000	0.375	8	
1256216	4 x 2	Polyolefin	900	5.625	Two Piece Delrin	4 x 4.5	2.625 to 3.000	0.375	8	
1256219	5 x 2	Urethane	900	6.500	Two Piece Delrin	4 x 4.5	2.625 to 3.000	0.375	8	
1256220	5 x 2	Soft Rubber	375	6.500	Two Piece Delrin	4 x 4.5	2.625 to 3.000	0.375	8	
1256222	5 x 2	Polyolefin	900	6.500	Two Piece Delrin	4 x 4.5	2.625 to 3.000	0.375	8	
1256223	6 x 2	Urethane	900	7.500	Two Piece Delrin	4 x 4.5	2.625 to 3.000	0.375	8	
1256226	6 x 2	Soft Rubber	600	7.500	Two Piece Delrin	4 x 4.5	2.625 to 3.000	0.375	8	
1256227	6 x 2	Polyolefin	900	7.500	Two Piece Delrin	4 x 4.5	2.625 to 3.000	0.375	8	
1256228	6 x 2	Polyolefin	900	9.500	Two Piece Delrin	4 x 4.5	2.625 to 3.000	0.375	8	
1256230	8 x 2	Urethane	1000	5.625	Two Piece Delrin	4 x 4.5	2.625 to 3.000	0.375	8	
1256231	8 x 2	Soft Rubber	900	8.500	Two Piece Delrin	4 x 4.5	2.625 to 3.000	0.375	8	

**STAINLESS STEEL HIGH TEMPERATURE CASTERS****Stainless Steel Swivel Plate**

Specifications:

- Housing Material: Stainless Steel
- Wheel Material: See Table

Features:

- Suitable for high temperature operating environments
- Temperature range up to 500°F
- Resistant to corrosion and rust
- Ideal for Powder Coating, all types of ovens and other applications that require resistance to high temperatures



Nylon



Polypropylene Retort



Item No.	Wheel Specifications					Plate Specifications				Bulk Pack Qty.
	Wheel Diameter x Width in	Wheel Type	Capacity lbs	OAH in	Bearing	Swivel Radius in	Overall Size L x W in	Mouting Hole Width in	Ø Plate Bolt Hole in	
1256090	3.5 x 1.25	Nylon	300	4.688	Plain Bore	2.5	3.625 x 2.5	1.75	0.313	16
1256092	3.5 x 1.25	Polypropylene Retort	300	4.688	Plain Bore	2.5	3.625 x 2.5	1.75	0.313	16
1256095	4.0 x 1.25	Nylon	350	5.125	Plain Bore	2.5	3.625 x 2.5	1.75	0.313	16
1256097	4.0 x 1.25	Polypropylene Retort	150	5.125	Plain Bore	2.5	3.625 x 2.5	1.75	0.313	16
1256112	5.0 x 1.25	Polypropylene Retort	175	6.188	Plain Bore	3.0	3.625 x 2.5	1.75	0.313	16

Stainless Steel Swivel Plate with Brake

Nylon

Guidelines to Help
You Select the
Correct Caster
See Page 317

Item No.	Wheel Specifications					Plate Specifications				Bulk Pack Qty.
	Wheel Diameter x Width in	Wheel Type	Capacity lbs	OAH in	Bearing	Swivel Radius in	Overall Size L x W in	Mouting Hole Width in	Ø Plate Bolt Hole in	
1256106	4.0 x 2.0	Nylon	900	5.625	Roller	2.876	4 x 4.5	2.625 to 3.000	0.375	8
1256115	5.0 x 2.0	Nylon	900	6.500	Roller	3.25	4 x 4.5	2.625 to 3.000	0.375	8
1256140	6.0 x 2.0	Nylon	900	7.500	Roller	3.75	4 x 4.5	2.625 to 3.000	0.375	8

Stainless Steel Rigid Plate

Nylon Plain Bore



Polypropylene Retort



Nylon Roller Bore

Item No.	Wheel Specifications					Plate Specifications			Bulk Pack Qty.
	Wheel Diameter x Width in	Wheel Type	Capacity lbs	OAH in	Bearing	Overall Size L x W in	Mouting Hole Width in	Ø Plate Bolt Hole in	
1256191	3.5 x 1.25	Nylon	300	4.688	Plain Bore	3.625 x 2.5	1.750	0.313	16
1256193	3.5 x 1.25	Polypropylene Retort	300	4.688	Plain Bore	3.625 x 2.5	1.750	0.313	16
1256197	4.0 x 1.25	Nylon	350	5.125	Plain Bore	3.625 x 2.5	1.750	0.313	16
1256199	4.0 x 1.25	Polypropylene Retort	150	5.125	Plain Bore	3.625 x 2.5	1.750	0.313	16
1256203	5.0 x 1.25	Nylon	350	6.188	Plain Bore	3.625 x 2.5	1.750	0.313	16
1256205	5.0 x 1.25	Polypropylene Retort	175	6.188	Plain Bore	3.625 x 2.5	1.750	0.313	16
1256215	4.0 x 2.0	Nylon	900	5.625	Roller	4.0 x 4.5	2.625 to 3.000	0.375	8
1256221	5.0 x 2.0	Nylon	900	6.500	Roller	4.0 x 4.5	2.625 to 3.000	0.375	8
1256229	6.0 x 2.0	Nylon	900	7.500	Roller	4.0 x 4.5	2.625 to 3.000	0.375	8
1256232	8.0 x 2.0	Nylon	900	9.500	Roller	4.0 x 4.5	2.625 to 3.000	0.375	8

RIGID CASTERS



Steel Rigid Plate Casters



TPR



Rubber



Steel



Polyurethane



Polyolefin



Phenolic

Specifications:

- Housing Material: Zinc Plated Steel
- Wheel Material: See Table

Features:

- Economical solution for general applications

Guidelines to Help
You Select the
Correct Caster
See Page 317

Item No.	Wheel Specifications					Plate Specifications				Bulk Pack Qty.
	Wheel Diameter x Width in	Wheel Type	Capacity lbs	OAH in	Bearing	Overall Size L x W in	Mouting Hole Width in	Ø Plate Bolt Hole in		
1256086	3 x .813	Soft Rubber	110	3.500	Plain Bore	2.625 x 3.750	1.750	0.313	40	
1256087	3 x .813	TPR	110	3.500	Plain Bore	2.625 x 3.750	1.750	0.313	40	
1256088	3 x .813	Hard Rubber	125	3.500	Plain Bore	2.625 x 3.750	1.750	0.313	40	
1256089	3 x .813	Polyolefin	125	3.500	Plain Bore	2.625 x 3.750	1.750	0.313	40	
1256123	4 x .938	Soft Rubber	125	4.875	Plain Bore	2.625 x 3.750	1.750	0.313	20	
1256124	4 x .938	TPR	125	4.875	Plain Bore	2.625 x 3.750	1.750	0.313	20	
1256125	4 x .938	Hard Rubber	150	4.875	Plain Bore	2.625 x 3.750	1.750	0.313	20	
1256126	4 x .938	Polyolefin	150	4.875	Plain Bore	2.625 x 3.750	1.750	0.313	20	
1256147	5 x .938	Soft Rubber	130	5.875	Plain Bore	2.625 x 3.750	1.750	0.313	15	
1256148	5 x .938	TPR	130	5.875	Plain Bore	2.625 x 3.750	1.750	0.313	15	
1256149	5 x .938	Hard Rubber	150	5.875	Plain Bore	2.625 x 3.750	1.750	0.313	15	
1256150	5 x .938	Polyolefin	150	5.875	Plain Bore	2.625 x 3.750	1.750	0.313	15	
1256178	2 x .813	Soft Rubber	90	2.500	Plain Bore	1.50 x 2.656	0.938	0.25	100	
1256179	2 x .813	Polyolefin	125	2.500	Plain Bore	1.50 x 2.656	0.938	0.25	100	
1256180	2 x .813	Hard Rubber	125	2.500	Plain Bore	1.50 x 2.656	0.938	0.25	100	
1256181	2 x .813	Steel	125	2.500	Plain Bore	1.50 x 2.656	0.938	0.25	48	
1256182	2.5 x 1.125	Soft Rubber	100	3.250	Plain Bore	2.125 x 4.375	1.063	0.313	40	
1256183	2.5 x 1.125	Polyolefin	175	3.250	Plain Bore	2.125 x 4.375	1.063	0.313	40	
1256184	2.5 x 1.125	Hard Rubber	175	3.250	Plain Bore	2.125 x 4.375	1.063	0.313	40	
1256185	2.5 x 1.125	Steel	175	3.250	Plain Bore	2.125 x 4.375	1.063	0.313	24	
1256186	3 x 1.250	Polyurethane	250	4.250	Ball Bearings	1.750 x 2.813	2.750 to 3.000	0.313	20	
1256187	2 x .813	Soft Rubber	90	3.813	Plain Bore	2.313 x 4.875	1.188	0.313	32	
1256188	3 x 1.250	Polyolefin	210	3.813	Plain Bore	2.313 x 4.875	1.188	0.313	32	
1256189	3 x 1.250	Hard Rubber	225	3.813	Plain Bore	2.313 x 4.875	1.188	0.313	32	
1256190	3 x 1.250	Steel	225	3.813	Plain Bore	2.313 x 4.875	1.188	0.313	16	
1256196	4 x 1.250	Polyurethane	300	5.25	Ball Bearings	1.750 x 2.813	2.750 to 3.000	0.313	20	
1256202	5 x 1.250	Polyurethane	350	6.25	Ball Bearings	1.750 x 2.813	2.750 to 3.000	0.313	20	
1256208	4 x 1.375	Soft Rubber	200	5.000	Plain Bore	3.125 x 6.125	1.750	0.375	18	
1256209	4 x 1.375	Polyolefin	250	5.000	Plain Bore	3.125 x 6.125	1.750	0.375	18	
1256210	4 x 1.375	Hard Rubber	300	5.000	Plain Bore	3.125 x 6.125	1.750	0.375	18	
1256211	4 x 2	Polyurethane	500	5.625	Roller Bearings	4 x 4.5	2.625 to 3.000	0.375	8	
1256212	4 x 2	Phenolic	800	5.625	Roller Bearings	4 x 4.5	2.625 to 3.000	0.375	8	
1256217	5 x 2	Polyurethane	600	6.500	Roller Bearings	4 x 4.5	2.625 to 3.000	0.375	8	
1256218	5 x 2	Phenolic	1000	6.500	Roller Bearings	4 x 4.5	2.625 to 3.000	0.375	8	
1256224	6 x 2	Polyurethane	800	7.500	Roller Bearings	4 x 4.5	2.625 to 3.000	0.375	8	
1256225	6 x 2	Phenolic	1200	7.500	Roller Bearings	4 x 4.5	2.625 to 3.000	0.375	8	



SWIVEL CASTERS

Steel Swivel Plate Casters



Soft Rubber



Steel



TPR



Polyolefin



Phenolic



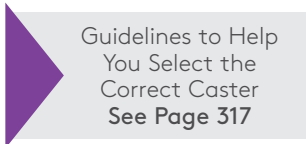
Hard Rubber

Specifications:

- Housing Material: Zinc Plated Steel
- Wheel Material: See Table

Features:

- Provides 360° rotation
- Economical solution for general applications



Item No.	Wheel Specifications					Plate Specifications				
	Wheel Diameter x Width in	Wheel Type	Capacity lbs	OAH in	Bearing	Swivel Radius in	Overall Size L x W in	Mouting Hole Width in	Ø Plate Bolt Hole in	Bulk Pack Qty.
1256054	2 x .813	Soft Rubber	90	2.500	Plain Bore	1.813	1.938 x 2.563	0.938	0.250	100
1256055	2 x .813	Polyolefin	125	2.500	Plain Bore	1.813	1.938 x 2.563	0.938	0.250	100
1256056	2 x .813	Hard Rubber	125	2.500	Plain Bore	1.813	1.938 x 2.563	0.938	0.250	100
1256057	2 x .813	Steel	125	2.500	Plain Bore	1.813	1.938 x 2.563	0.938	0.250	48
1256058	2 x .813	TPR	80	2.625	Plain Bore	1.938	1.188 x 2	0.813	0.188	100
1256059	2 x .813	Hard Rubber	90	2.625	Plain Bore	1.938	1.188 x 2	0.813	0.188	100
1256060	2 x .813	Polyolefin	90	2.625	Plain Bore	1.938	1.188 x 2	0.813	0.188	100
1256065	2 x .813	Soft Rubber	80	2.625	Plain Bore	1.938	1.188 x 2	0.813	0.188	100
1256066	2.5 x .813	Soft Rubber	80	3.125	Plain Bore	2.125	1.188 x 2	0.813	0.188	80
1256067	2.5 x .813	TPR	80	3.125	Plain Bore	2.125	1.188 x 2	0.813	0.188	80
1256068	2.5 x .813	Hard Rubber	95	3.125	Plain Bore	2.125	1.188 x 2	0.813	0.188	80
1256069	2.5 x .813	Polyolefin	95	3.125	Plain Bore	2.125	1.188 x 2	0.813	0.188	80
1256074	2.5 x 1.125	Soft Rubber	100	3.250	Plain Bore	2.250	2.750 x 3.875	1.750	0.313	40
1256075	2.5 x 1.125	Polyolefin	175	3.250	Plain Bore	2.250	2.750 x 3.875	1.750	0.313	40
1256076	2.5 x 1.125	Hard Rubber	175	3.250	Plain Bore	2.250	2.750 x 3.875	1.750	0.313	40
1256077	2.5 x 1.125	Steel	175	3.250	Plain Bore	2.250	2.750 x 3.875	1.750	0.313	24
1256078	3 x .813	Soft Rubber	110	3.500	Plain Bore	2.500	2.625 x 3.750	1.750	0.313	40
1256079	3 x .813	TPR	110	3.500	Plain Bore	2.500	2.625 x 3.750	1.750	0.313	40
1256080	3 x .813	Hard Rubber	120	3.500	Plain Bore	2.500	2.625 x 3.750	1.750	0.313	40
1256081	3 x .813	Polyolefin	120	3.500	Plain Bore	2.500	2.625 x 3.750	1.750	0.313	40
1256100	3 x 1.250	Soft Rubber	150	3.813	Plain Bore	2.625	3.125 x 4.125	2.375	0.313	32
1256101	3 x 1.250	Polyolefin	210	3.813	Plain Bore	2.625	3.125 x 4.125	2.375	0.313	32
1256102	3 x 1.250	Hard Rubber	225	3.813	Plain Bore	2.625	3.125 x 4.125	2.375	0.313	32
1256103	3 x 1.250	Steel	225	3.813	Plain Bore	2.625	3.125 x 4.125	2.375	0.313	16
1256127	4 x .938	Soft Rubber	125	4.875	Plain Bore	3.438	2.625 x 3.750	1.750	0.313	20
1256128	4 x .938	TPR	125	4.875	Plain Bore	3.438	2.625 x 3.750	1.750	0.313	20
1256129	4 x .938	Hard Rubber	150	4.875	Plain Bore	3.438	2.625 x 3.750	1.750	0.313	20
1256130	4 x .938	Polyolefin	150	4.875	Plain Bore	3.438	2.625 x 3.750	1.750	0.313	20
1256135	4 x 1.375	Soft Rubber	200	5.000	Plain Bore	3.438	4 x 5.125	3.000	0.375	18
1256136	4 x 1.375	Polyolefin	250	5.000	Plain Bore	3.438	4 x 5.125	3.000	0.375	18
1256137	4 x 1.375	Hard Rubber	300	5.000	Plain Bore	3.438	4 x 5.125	3.000	0.375	18
1256151	5 x .938	Soft Rubber	130	5.875	Plain Bore	4.125	2.625 x 3.750	1.750	0.313	15
1256152	5 x .938	TPR	130	5.875	Plain Bore	4.125	2.625 x 3.750	1.750	0.313	15
1256153	5 x .938	Hard Rubber	150	5.875	Plain Bore	4.125	2.625 x 3.750	1.750	0.313	15
1256154	5 x .938	Polyolefin	150	5.875	Plain Bore	4.125	2.625 x 3.750	1.750	0.313	15
1256159	3 x 1.250	Polyurethane	250	4.250	Precision Bearings	4.375	2.625 x 3.750	1.750	0.313	20
1256161	4 x 1.250	Polyurethane	300	5.250	Precision Bearings	4.375	2.625 x 3.750	1.750	0.313	20
1256163	5 x 1.250	Polyurethane	315	6.250	Precision Bearings	4.375	2.625 x 3.750	1.750	0.313	20
1256167	6 x 2	Phenolic	1200	7.500	Roller Bearings	4.750	4 x 4.5	2.625 to 3.000	0.375	8
1256172	4 X 2	Polyurethane	500	5.625	Roller Bearings	5.438	4 x 4.5	2.625 to 3.000	0.375	8
1256173	4 X 2	Phenolic	800	5.625	Roller Bearings	5.438	4.5 x 7	2.625 to 3.000	0.375	8
1256174	5 x 2	Polyurethane	600	6.500	Roller Bearings	5.813	4.5 x 5	2.625 to 3.000	0.375	8
1256175	5 x 2	Phenolic	900	6.500	Roller Bearings	5.813	4.5 x 8	2.625 to 3.000	0.375	8
1256176	6 x 2	Polyurethane	720	7.500	Roller Bearings	6.000	4.5 x 6	2.625 to 3.000	0.375	8
1256177	6 x 2	Phenolic	900	7.500	Roller Bearings	6.000	4.5 x 9	2.625 to 3.000	0.375	8

THREADED STEM CASTERS



Steel Threaded Stem Casters



Rubber



TPR



Polyolefin



Specifications:

- Housing Material: Zinc Plated Steel
- Wheel Material: See Table

Features:

- Economical solution for general applications

Item No.	Wheel Diameter x Width		Wheel Type	Capacity			Stem Size Length x Width		Thread Size	Bulk Pack Qty.
	In			lbs	OAH	Bearing	Swivel Radius	In	In	
1256061	2 x .813		Soft Rubber	80	2.625	Plain Bore	1.938	1-1/2 x 3/8	3/8-16	100
1256062	2 x .813		TPR	80	2.625	Plain Bore	1.938	1-1/2 x 3/8	3/8-16	100
1256063	2 x .813		Hard Rubber	90	2.625	Plain Bore	1.938	1-1/2 x 3/8	3/8-16	100
1256064	2 x .813		Polyolefin	90	2.625	Plain Bore	1.938	1-1/2 x 3/8	3/8-16	100
1256070	2.5 x .813		Soft Rubber	80	3.125	Plain Bore	2.125	1-1/2 x 3/8	3/8-16	80
1256071	2.5 x .813		TPR	80	3.125	Plain Bore	2.125	1-1/2 x 3/8	3/8-16	80
1256072	2.5 x .813		Hard Rubber	95	3.125	Plain Bore	2.125	1-1/2 x 3/8	3/8-16	80
1256073	2.5 x .813		Polyolefin	95	3.125	Plain Bore	2.125	1-1/2 x 3/8	3/8-16	80
1256082	3 x .813		Soft Rubber	110	3.500	Plain Bore	2.500	1-1/2 x 3/8	3/8-16	60
1256083	3 x .813		TPR	110	3.500	Plain Bore	2.500	1-1/2 x 3/8	3/8-16	60
1256084	3 x .813		Hard Rubber	125	3.500	Plain Bore	2.500	1-1/2 x 3/8	3/8-16	60
1256085	3 x .813		Polyolefin	125	3.500	Plain Bore	2.500	1-1/2 x 3/8	3/8-16	60
1256131	4 x .938		Soft Rubber	125	4.750	Plain Bore	3.438	1-1/2 x 3/8	3/8-16	20
1256132	4 x .938		TPR	125	4.750	Plain Bore	3.438	1-1/2 x 3/8	3/8-16	20
1256133	4 x .938		Hard Rubber	150	4.750	Plain Bore	3.438	1-1/2 x 3/8	3/8-16	20
1256134	4 x .938		Polyolefin	150	4.750	Plain Bore	3.438	1-1/2 x 3/8	3/8-16	20
1256155	5 x .938		Soft Rubber	130	5.750	Plain Bore	4.125	1-1/2 x 3/8	3/8-16	15
1256156	5 x .938		TPR	130	5.750	Plain Bore	4.125	1-1/2 x 3/8	3/8-16	15
1256157	5 x .938		Hard Rubber	150	5.750	Plain Bore	4.125	1-1/2 x 3/8	3/8-16	15
1256158	5 x .938		Polyolefin	150	5.750	Plain Bore	4.125	1-1/2 x 3/8	3/8-16	15

GUIDELINES TO HELP YOU SELECT THE CORRECT CASTER

Load Capacity

In order to determine the load capacity for each caster you must divide the combined weight and maximum load of the equipment by the number of casters to be used.

This is the load that each caster must support. Always select a caster that is rated with a load capacity greater than the calculated load per caster.

Calculation

$$\frac{\text{MAXIMUM WEIGHT OF EQUIPMENT}}{\text{NUMBER OF CASTERS USED}} = \text{APPROXIMATE LOAD CAPACITY}$$