

4

3

2

1

THIS DRAWING IS UNPUBLISHED. RELEASED FOR PUBLICATION
 © COPYRIGHT - By - TE CONNECTIVITY ALL RIGHTS RESERVED.

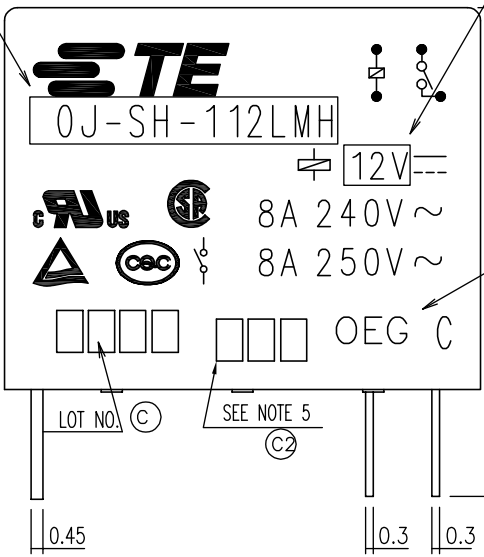
LOC		DIST		REVISIONS			
P	LTR	DESCRIPTION		DATE	DWN	APVD	
HB	-	C2	CHANGE LOGO&ADD LINE IDENTIFICATION	EC0-12-001771	21Aug2012	YS.H	BH.Y



(B1)

PART B

PART A



(C2)

TE

OJ-SH-112LMH

12V



8A 240V ~

8A 250V ~

OEG C

LOT NO. (C)

SEE NOTE 5 (C2)

C:MADE IN CHINA

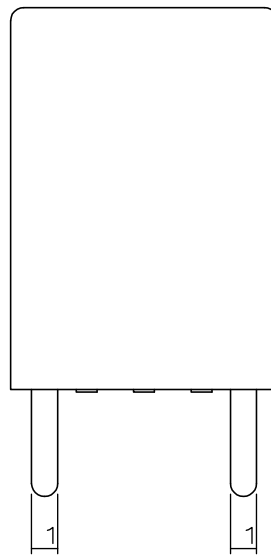
0.45

0.3

0.3

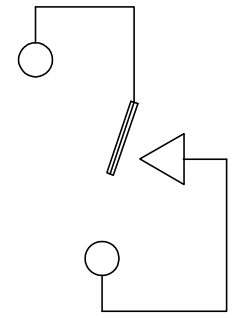
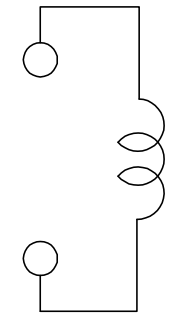
14.6±0.5

4.1±0.3



1

1



CONNECTION FIGURE

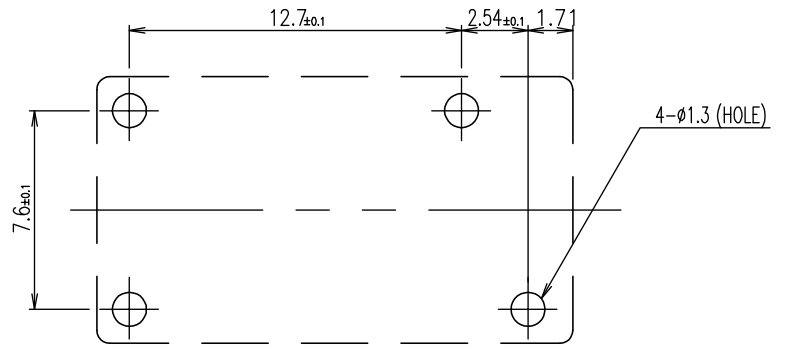
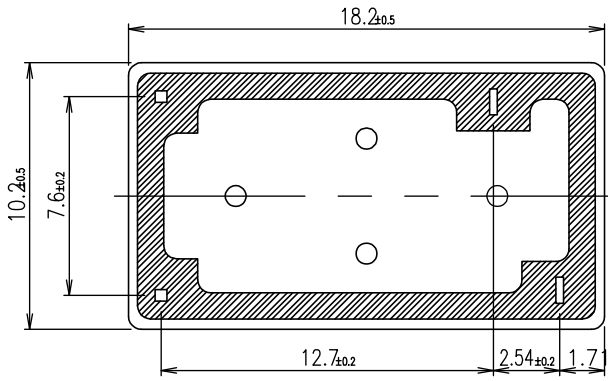


FIGURE FOR PRINTED CIRCUIT BOARD PROCESSING (BOTTOM VIEW)



10.2±0.5

7.6±0.2

18.2±0.5

12.7±0.2

2.54±0.2

1.7

THIS DRAWING IS A CONTROLLED DOCUMENT.		DWN	H.Sasaki		TE TE Connectivity			
DIMENSIONS: mm		CHK	Y.Oikawa					
TOLERANCES UNLESS OTHERWISE SPECIFIED:		APVD	A.Nagai		NAME			
0 PLC ± -		PRODUCT SPEC	-		OJ-SH-LMH SPEC 000			
1 PLC ± -		APPLICATION SPEC	-		SIZE	CAGE CODE	DRAWING NO	RESTRICTED TO
2 PLC ± -		WEIGHT	-		A3	00779	G= 1461247	-
3 PLC ± -		CUSTOMER DRAWING		SCALE	SHEET		REV	
4 PLC ± -				5:1	1 of 2		C2	
ANGLES ± -								
FINISH								

THIS DRAWING IS UNPUBLISHED. RELEASED FOR PUBLICATION
 © COPYRIGHT - By - TE CONNECTIVITY ALL RIGHTS RESERVED.

LOC	DIST	REVISIONS					
HB	-	P	LTR	DESCRIPTION	DATE	DWN	APVD
		-	-	SEE SHEET 1	-	-	-

(B1)	ACTIVE	1461247-3	OJ-SH-124LMH, 000	107-79010	24V	OJ-SH-124LMH	g
	ACTIVE	1419129-1	OJ-SH-118LMH, 000	107-79010	18V	OJ-SH-118LMH	f
	ACTIVE	9-1419128-8	OJ-SH-112LMH, 000	107-79010	12V	OJ-SH-112LMH	e
	ACTIVE	1461247-2	OJ-SH-109LMH, 000	107-79010	9V	OJ-SH-109LMH	d
	ACTIVE	1461247-1	OJ-SH-106LMH, 000	107-79010	6V	OJ-SH-106LMH	c
	ACTIVE	8-1419128-1	OJ-SH-105LMH, 000	107-79010	5V	OJ-SH-105LMH	b
(C2)	OBSOLETE	1461247-4	OJ-SH-103LMH, 000	107-79010	3V	OJ-SH-103LMH	a
	PART STATUS	PART NO	DESCRIPTION	PACKAGE SPEC.	PART B	PART A	TYPE

RELAY TYPE


NOTES:
 (C1)(B1) 1.LOT NO. SYSTEM AS FOLLOWING:
 0 5 4 7
 WEEK
 YEAR

(C2) 5.ADD LOT NO. SYSTEM AS FOLLOWING;
 I, DIGITS FOR DAY OF THE WEEK
 1...MONDAY IN THIS WEEK;
 2...TUESDAY IN THIS WEEK;

 7...SUNDAY IN THIS WEEK
 II, DIGITS FOR SHIFT OF THE DAY
 1...DAY SHIFT IN THIS DAY;
 2...NIGHT SHIFT IN THIS DAY;
 III, ONE CHARACTER DISTINGUISH THE LINE
 IDENTITY,
 SUCH AS: A,B.....Z

(C2) 2.TERMINAL DIMENSION IS BEFORE SOLDER DIP;
 (C2) 3.FOR THE TIN-PLATING OF THE PINS:
 +0.1mm FOR WIDTH,THICKNESS AND DIAMETER.
 +0.5mm FOR LENGTH.
 (C2) 4.MARKING FROM INK TO LASER.

		UV RESIN	SEAL (VENT HOLE)	16
		EPOXY RESIN	SEAL (BASE & BOBBIN)	15
		3UEW	MAGNETIC WIRE	14
94V-0		P.B.T	CASE	13
94V-0		P.B.T	BASE	12
94V-0		P.B.T	BOBBIN	11
	SOLDER DIP	C.P WIRE	COIL TERMINAL	10
94V-0		P.P.S	CARD	9
		Ag ALLOY	MOVABLE CONTACT	8
		Ag ALLOY	NO.CONTACT	7
		STEEL	HINGE SPRING	6
	SOLDER DIP	Cu ALLOY	NO.TERMINAL	5
	SOLDER DIP	Cu ALLOY	MOVABLE SPRING	4
	NIP	STEEL	CORE	3
	NIP	STEEL	ARMATURE	2
	NIP	STEEL	YOKE	1
INCOMBUSTIBILITY	TREATMENT	MATERIAL	DESCRIPTION	ITEM

THIS DRAWING IS A CONTROLLED DOCUMENT.		DWN	H.Sasaki		 TE Connectivity OJ-SH-LMH SPEC 000							
DIMENSIONS: mm		CHK	Y.Oikawa						NAME			
TOLERANCES UNLESS OTHERWISE SPECIFIED:		APVD	A.Nagai						SIZE			
0 PLC ± - 1 PLC ± - 2 PLC ± - 3 PLC ± - 4 PLC ± - ANGLES ± -		PRODUCT SPEC	-						CAGE CODE	DRAWING NO		RESTRICTED TO
MATERIAL	FINISH	APPLICATION SPEC	-		00779	G= 1461247		-				
-		WEIGHT	-		CUSTOMER DRAWING							
		SCALE		5:1		SHEET		2 of 2				
								REV C2				