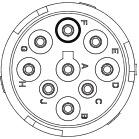
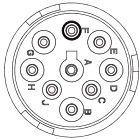


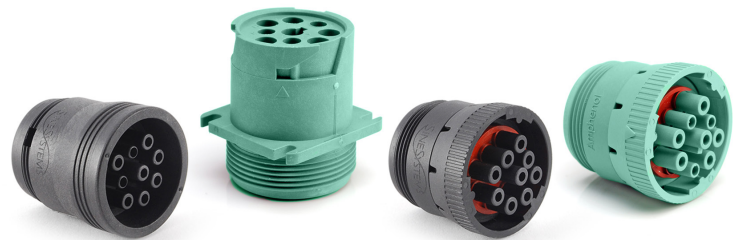
What Type Are You?

AHD Series™ J1939 Type 1 & 2 On-Vehicle Data Connectors

J1939 has become the accepted industry standard and the choice for vehicle diagnostic and data communication for commercial heavy-duty, off-highway, truck, bus, marine propulsion, power generation, industrial pumping, construction, and material handling machines. J1939 is a higher-layer protocol based on Controller Area Network (CAN). Adopted widely by the diesel engine industry, it provides diagnostic data such as vehicle engine speed, temperature, oil temperature, exhaust emissions, and other customizable options.

What Are The Differences Between Type 1 and 2?

	Pin	
Type 1 (Black)		Type 2 (Green)
Ground	A	Ground
Battery	B	Battery
J1939 + 250kb	C	J1939 + 500kb
J1939 - 250kb	D	J1939 - 500kb
J1939 Shield	E	J1939 Shield
J1708+	F	J1708+ / J1939 + 250kb
J1708-	G	J1708- / J1939 - 250kb
OEM Specific	H	OEM Specific
OEM Specific	J	OEM Specific



Part of the
A Series Family



AHD Series J1939 Type 1 & 2

AHD Receptacles	Part Number	Type	Description
	AHD10-9-1939P	1	AHD Series, 9 Position, Receptacle, Type 1
	AHD10-9-1939PE	1	AHD Series, 9 Position, Receptacle, Reduce Seal, Type 1
	AHD17-9-1939PES	1	AHD Series, 9 Position, Receptacle, Jam Mount, Extended Shroud, Reduced Seal, Type 1
	AHD10-9-1939P-B022	1	AHD Series, 9 Position, Receptacle, Jam Mount, Type 1 *Available Q1 2018
	AHD10-9-1939PR-B022	1	AHD Series, 9 Position, Receptacle, Reduced Seal, Jam Mount, Type 1 *Available Q1 2018
	AHD14-9-1939P	1	AHD Series, 9 Position, Receptacle, In-Line, Type 1
	AHD10-9-1939P80	2	AHD Series, 9 Position, Receptacle, Type 2
	AHD10-9-1939P8R	2	AHD Series, 9 Position, Receptacle, Reduced Seal, Type 2
	AHD17-9-1939PES80	2	AHD Series, 9 Position, Receptacle, Jam Mount, Extended Shroud, Reduced Seal, Type 2
	AHD10-9-1939P-BP80	2	AHD Series, 9 Position, Receptacle, Jam Mount, Type 2 *Available Q1 2018
AHD10-9-1939PR-BP80	2	AHD Series, 9 Position, Receptacle, Reduced Seal, Jam Mount, Type 2 *Available Q1 2018	
AHD Plugs	Part Number	Type	Description
	AHD16-9-1939S	1	AHD Series, 9 Position, Plug, Locking Ring, Type 1
	AHD16-9-1939SE	1	AHD Series, 9 Position, Plug, Reduced Seal, Locking Ring, Type 1
	AHD17-9-1939S	1	AHD Series, 9 Position, Plug, Smooth Shell Diagnostic Grade, Type 1
	AHD16-9-1939S80	2	AHD Series, 9 Position, Plug, Locking Ring, Type 2
	AHD16-9-1939S8R	2	AHD Series, 9 Position, Plug, Reduced Seal, Locking Ring, Type 2
AHD Caps	Part Number	Type	Description
	AHDC-16-9-BLK	1	AHD Series, 9 Position, Receptacle, Cap, Black, Type 1
	AHDC-16-9-OBDBK	1	AHD Series, 9 Position, Receptacle, Cap, OBD Black, Type 1
	AHDC-16-9-OBDBGN	2	AHD Series, 9 Position, Receptacle, Cap, OBD Green, Type 2
AHD Panel Nuts	Part Number	Type	Description
	AHD17-PN01	1	AHD Series, 9 Position, Panel Nut (used on the AHD17-9-1939PES/80), Black, Type 1
	AHD17-PN01-GRN	2	AHD Series, 9 Position, Panel Nut (used on the AHD17-9-1939PES80) Green, Type 2
	AHDP18-PN01	1	AHD Series, 9 Position, Panel Nut (used on the AHD10-9-1939P/R-BP80/B022), Black, Type 1
AHD Cap & Tether	Part Number	Type	Description
	AHDC169-T-OBDBK	1	AHD Series, 9 Position, Receptacle, Cap w/ Rubber Tether, OBD Black, Type 1
	AHDC169-T-OBDBGN	2	AHD Series, 9 Position, Receptacle, Cap w/ Rubber Tether, OBD Green, Type 2
	AHDC169-T-BLK	1	AHD Series, 9 Position, Receptacle, Cap w/ Rubber Tether, Black, Type 1
	AHDC169-TMOBDBK	1	AHD Series, 9 Position, Receptacle, Cap w/ Metal Tether, OBD Black, Type 1
	AHDC169-TMOBDBGN	2	AHD Series, 9 Position, Receptacle, Cap w/ Metal Tether, OBD Green, Type 2
	AHDC169-TMBLK	1	AHD Series, 9 Position, Receptacle, Cap w/ Metal Tether, Black, Type 1

Important: All images shown above are just a sampling of available AHD Series J1939 parts. For complete selection, refer to website.

For more information, contact: Don Hunsucker, Product Manager, +1 586 913 8638, dhunsucker@amphenol-sine.com
Eric Schwegman, Business Development Mgr, +1 865 712 4138, eschwegman@amphenol-sine.com

© 2017 Amphenol Sine Systems Corporation, 44274 Morley Drive, Clinton Township MI 48036 USA. www.amphenol-sine.com. Customer Service +1 800 394 7732
Every effort has been made to ensure that the information contained in this document is accurate at the time of publication. Specifications or information stated in this document are subject to change without notice.