

LOC		DIST		REVISIONS			
P	LTR	DESCRIPTION	DATE	DMN	APVD		
01		REVISED PER ECO-10-022549	04NOV10	HMR	CR		

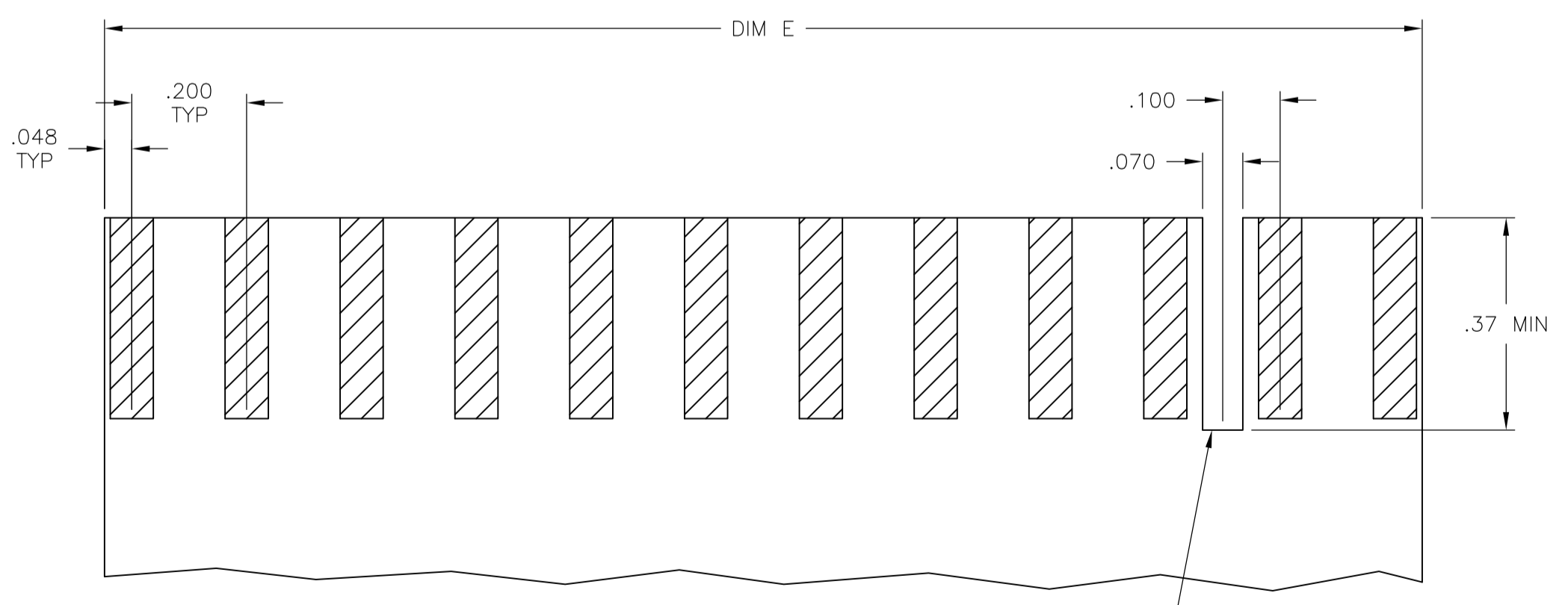
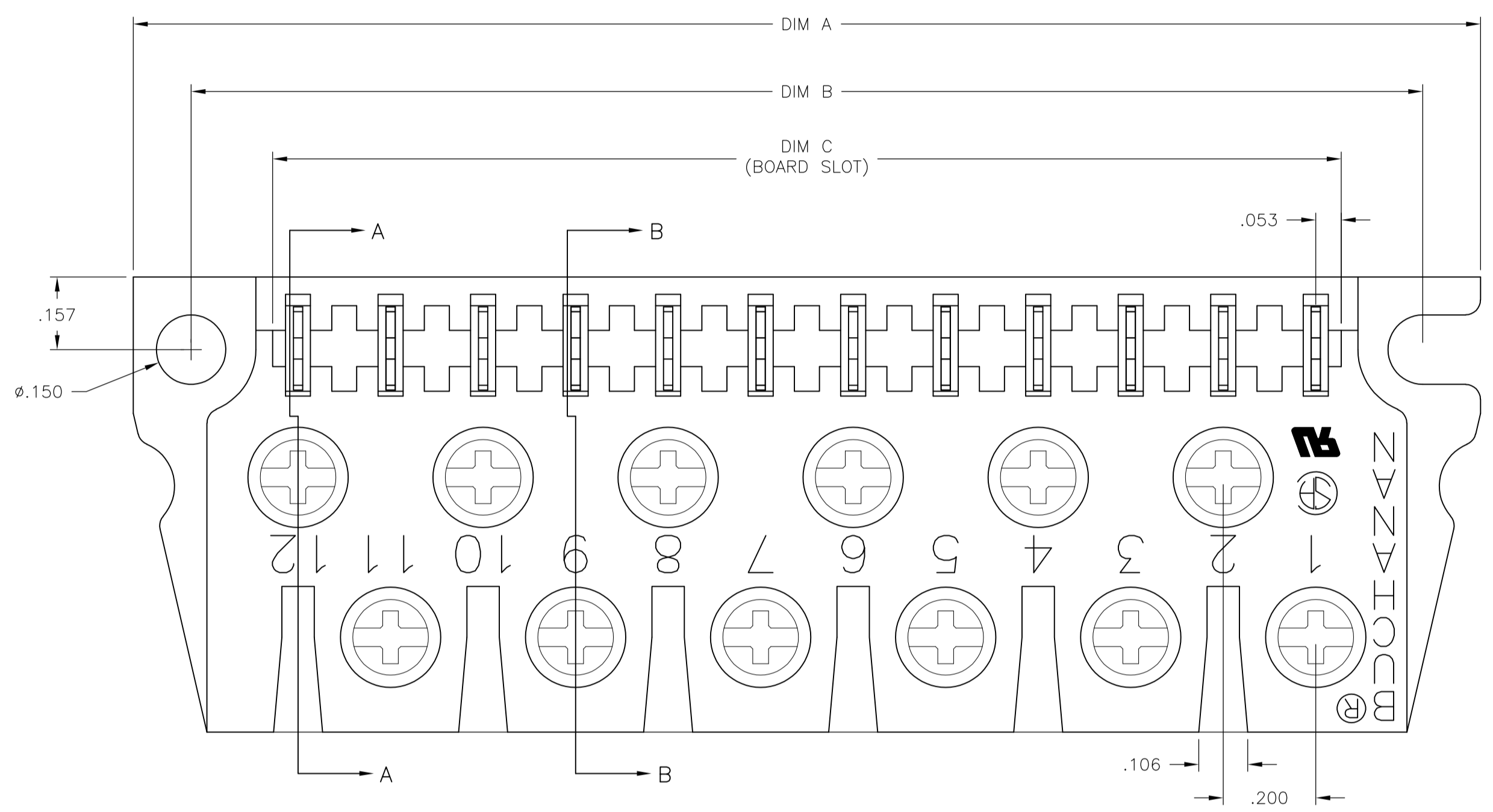
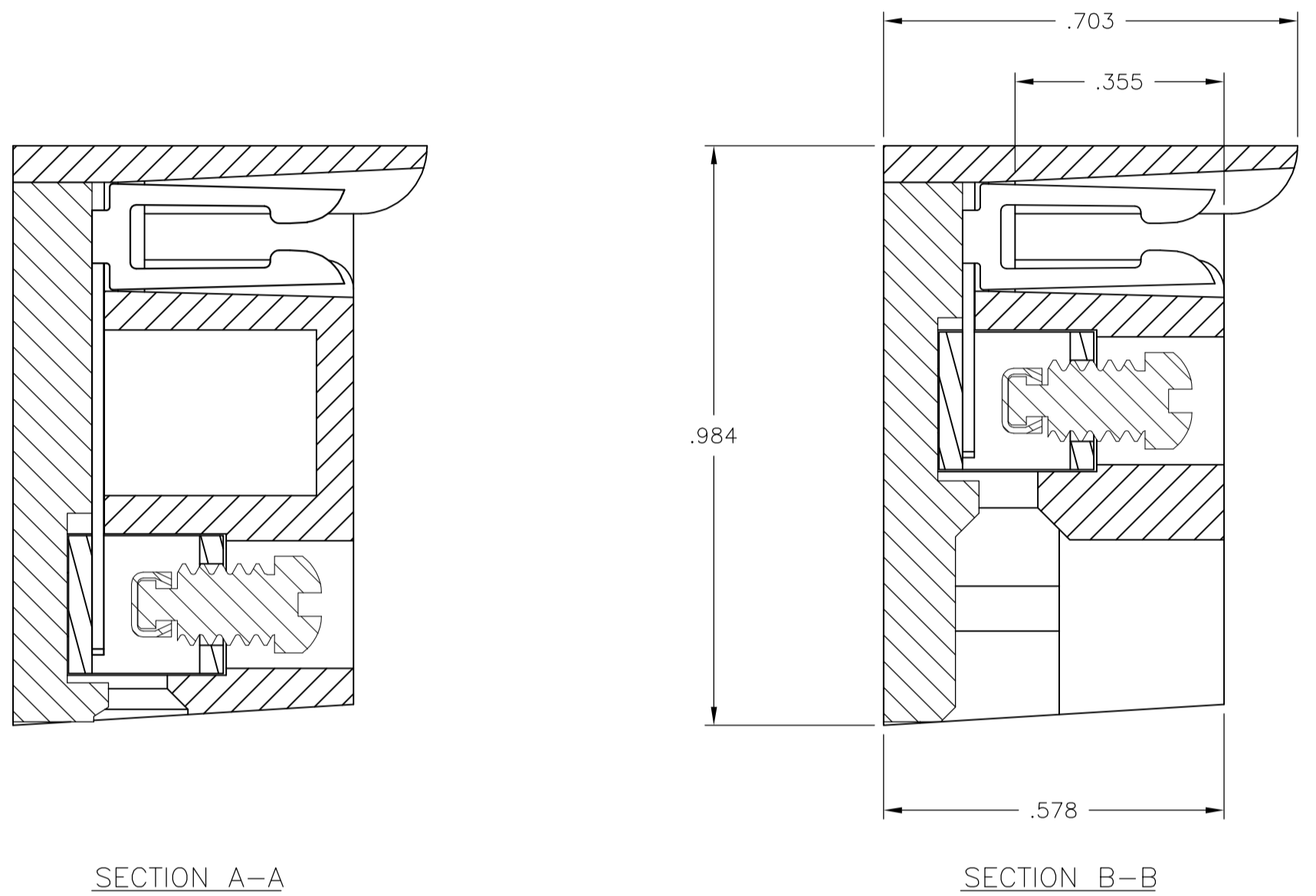
NOTES:

MATERIAL:
 HOUSING: POLYESTER, UL94V-0, WHITE.
 TUBULAR CONTACT: BRASS.
 PC CONTACT: PHOSPHOR BRONZE, GOLD OVER NICKEL PLATE.
 SCREW: 6-32, STEEL, ZINC CHROMATE FINISH.
 CLAMP: BRASS

MECHANICAL:
 PITCH: .200"
 WIRE STRIP LENGTH: .25"
 RECOMMENDED TIGHTENING TORQUE: 5-8 IN.-LBS.
 BOARD INSERTION FORCE: 5.6 OZ. PER CKT.
 BOARD SEPARATION FORCE: 1.8 OZ. PER CKT

ELECTRICAL:
 MAX CURRENT: 10A.
 OPERATING VOLTAGE: 250V.
 DIELECTRIC WITHSTAND: 2500V
 WIRE RANGE: #12 STRANDED ONLY.
 INSULATION RESISTANCE:
 CONTACT RESISTANCE:

ENVIRONMENTAL:
 OPERATING TEMP.: -65°C TO +140°C.



OPTIONAL POLARIZING NOTCH
 LOCATION PER CUSTOMER REQUIREMENT
 USE OPTIONAL POLARIZING KEY CAT. NO. PC17

RECOMMENDED PCB LAYOUT

7.095	7.110	7.470	7.720	36	PCB1A36A	1-1437410-6
5.895	5.910	6.270	6.520	30	PCB1A30A	1-1437410-4
4.695	4.710	5.070	5.320	24	PCB1A24A	1-1437410-2
3.495	3.510	3.870	4.120	18	PCB1A18A	1-1437410-0
2.295	2.310	2.670	2.920	12	PCB1A12A	1437410-8
DIM E	DIM C	DIM B	DIM A	NO. OF POS.	CATALOG NUMBER	PART NUMBER

THIS DRAWING IS A CONTROLLED DOCUMENT.

DIMENSIONS: INCHES	TOLERANCES UNLESS OTHERWISE SPECIFIED:	DIN S SCHLEGEL 16JUN04	Tyco Electronics Corporation Harrisburg, PA 17105-3608
		CHK S YODER 6/16/04	
	0 PLC ± -	APVD S YODER 6/16/04	NAME: PCB1A ASSEMBLY PRODUCT SPEC: SELECT GOLD PLATE
	1 PLC ± -	APPLICATION SPEC	
MATERIAL	FINISH	WEIGHT	RESTRICTED TO
		A1 00779	SCALE 4:1 SHEET 1 OF 1 REV 01

CUSTOMER DRAWING