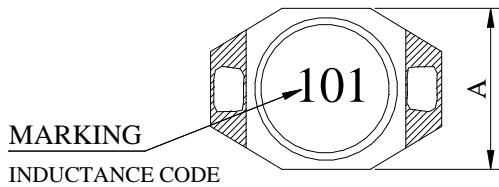


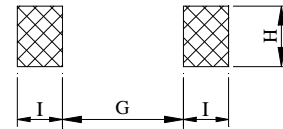
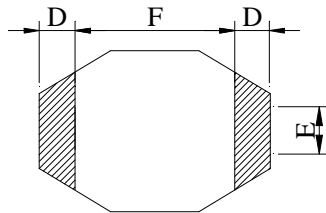
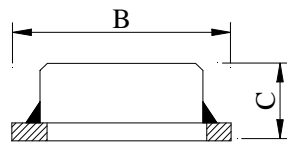
# PRODUCT SPECIFICATION

Product Name	1608 SMD POWER INDUCTORS - SHIELDED TYPE	Page	1
TAMURA Part No.	TS1608-XXX	Rev. No.	0

## 1. CONFIGURATION & DIMENSIONS :

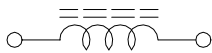


A	: 4.45 MAX	m/m
B	: 6.60 MAX	m/m
C	: 2.92 MAX	m/m
D	: 1.02±0.2	m/m
E	: 1.27±0.2	m/m
F	: 4.32±0.3	m/m
G	: 4.06 REF.	m/m
H	: 3.56 REF.	m/m
I	: 1.40 REF.	m/m



PCB PATTERN

## 2. SCHEMATIC DIAGRAM :



## 3. GENERAL SPECIFICATION :

- a) TEMP. RISE : 40°C MAX.
- b) RATED CURRENT : BASE ON TEMP. RISE &  $\Delta L / LOA=10\%$  MAX.
- c) STORAGE TEMP. : -40°C ----+105°C
- d) OPERATING TEMP. : -25°C----+85°C
- e) RESISTANCE TO SOLDER HEAT : 260°C FOR 10 SECS.

# PRODUCT SPECIFICATION

Product Name	1608 SMD POWER INDUCTORS - SHIELDED TYPE	Page	2
TAMURA Part No.	TS1608-XXX	Rev. No.	0

## 4. ELECTRICAL CHARACTERISTICS :

TAMURA Part No.	INDUCTANCE ( $\mu$ H)	Q MIN.	TEST FREQ. ( HZ )		SRF ( MHz ) TYP.	RDC ( Ohm ) MAX	IDC ( A ) MAX
			L	Q			
TS1608-1R0M	1.0 $\pm$ 20%	30	100K	200K	250	0.040	3.0
TS1608-1R5M	1.5 $\pm$ 20%	30	100K	200K	125	0.045	2.8
TS1608-2R2M	2.2 $\pm$ 20%	40	100K	200K	120	0.050	1.8
TS1608-3R3M	3.3 $\pm$ 20%	40	100K	200K	120	0.055	1.6
TS1608-4R7M	4.7 $\pm$ 20%	40	100K	200K	105	0.060	1.4
TS1608-6R8M	6.8 $\pm$ 20%	40	100K	200K	50	0.065	1.2
TS1608-100M	10.0 $\pm$ 20%	40	100K	200K	38	0.075	1.0
TS1608-150M	15.0 $\pm$ 20%	40	100K	100K	33	0.090	0.80
TS1608-220M	22.0 $\pm$ 20%	40	100K	100K	25	0.110	0.70
TS1608-330M	33.0 $\pm$ 20%	40	100K	100K	20	0.190	0.60
TS1608-470M	47.0 $\pm$ 20%	40	100K	100K	20	0.230	0.50
TS1608-680M	68.0 $\pm$ 20%	40	100K	100K	15	0.290	0.40
TS1608-101M	100.0 $\pm$ 20%	40	100K	100K	10	0.480	0.30
TS1608-151M	150.0 $\pm$ 20%	40	100K	100K	9	0.590	0.26
TS1608-221M	220.0 $\pm$ 20%	40	100K	100K	6	0.770	0.22
TS1608-331M	330.0 $\pm$ 20%	40	100K	100K	5	1.400	0.20
TS1608-471M	470.0 $\pm$ 20%	40	100K	100K	4	1.800	0.19
TS1608-681M	680.0 $\pm$ 20%	40	100K	100K	3	2.200	0.18
TS1608-102M	1000.0 $\pm$ 20%	40	100K	100K	2	3.400	0.15
TS1608-152M	1500.0 $\pm$ 20%	50	100K	100K	2	4.200	0.12
TS1608-222M	2200.0 $\pm$ 20%	50	100K	100K	2	8.500	0.10
TS1608-332M	3300.0 $\pm$ 20%	50	100K	100K	1	11.000	0.08
TS1608-472M	4700.0 $\pm$ 20%	50	100K	100K	1	13.900	0.06
TS1608-682M	6800.0 $\pm$ 20%	50	100K	100K	1	25.000	0.04
TS1608-103M	10000.0 $\pm$ 20%	50	100K	100K	0.8	32.800	0.02

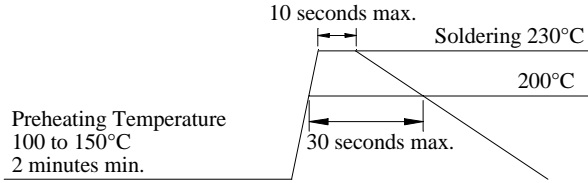


TAMURA

# PRODUCT SPECIFICATION

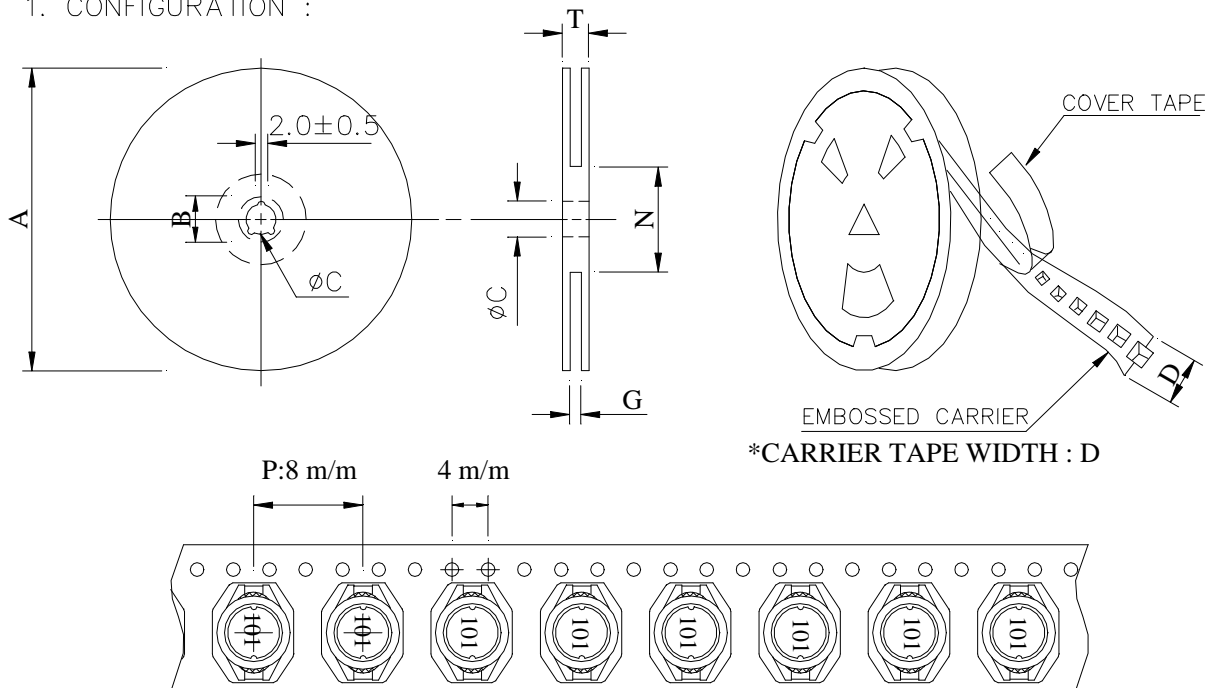
Product Name	1608 SMD POWER INDUCTORS - SHIELDED TYPE	Page	3
TAMURA Part No.	TS1608-XXX	Rev. No.	0

### RECOMMENDED SOLDERING CONDITIONS REFLOW SOLDERINGS



## 5. PACKAGING INFORMATION :

### 1. CONFIGURATION :



### (2) DIMENSIONS

Unit:m/m

STYLE	A	B	C	D	G	N	T
13 - 12	330	21	13	12	12.4	100 MIN	18.4

### (3) Q'TY & G.W. PER PACKAGE

SERIES	INNER : REEL			OUTER : CARTON		
	Q'TY (PCS)	G.W. (gw)	STYLE	Q'TY (PCS)	G.W. (Kg)	SIZE (cm)
TS1608	2,500	825	13 - 12	30,000	10.5	40 x 20 x 26

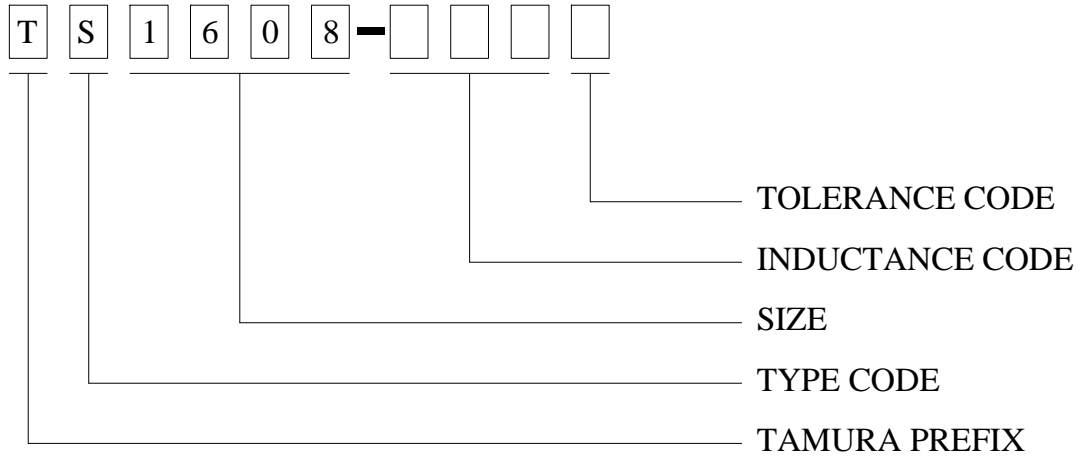


TAMURA

# PRODUCT SPECIFICATION

Product Name	1608 SMD POWER INDUCTORS - SHIELDED TYPE	Page	4
TAMURA Part No.	TS1608-XXX	Rev. No.	0

## 6. Part No. FORMAT :



TAMURA

# PRODUCT SPECIFICATION

Product Name	1608 SMD POWER INDUCTORS - SHIELDED TYPE	Page	5
TAMURA Part No.	TS1608-XXX	Rev. No.	0

## 7. RELIABILITY TEST :

TEST ITEM	SPECIFICATION	TEST CONDITION
SOLDERABILITY	MORE THAN 90% OF THE TERMINAL ELECTRODE SHALL BE COVERED WITH FRESH SOLDER.	PREHEAT : 125±25°C FOR 60 SECONDS SOLDER : H63A ( EUTECTIC SOLDER ) SOLDER TEMP. : 230±5°C FLUX : ROSIN DIP TIME : 4±1 SECONDS
THERMAL SHOCK TEST  ( TEMP. CYCLE )	INDUCTANCE SHALL NOT CHANGE MORE THAN ±20%	ROOM TEMP. —————> $\frac{-25\pm 2^{\circ}\text{C}}{30 \text{ MINUTES}}$ $\frac{15 \text{ MINUTES}}$
		ROOM TEMP. —————> $\frac{85\pm 2^{\circ}\text{C}}{30 \text{ MINUTES}}$ $\frac{15 \text{ MINUTES}}$
		TOTAL : 50 CYCLES
HUMIDITY RESISTANCE TEST		TEMPERATURE : 40±2°C HUMIDITY : 90 ~ 95% APPLIED CURRENT : PER SPEC. TIME : 500 HOURS
HIGH TEMP. RESISTANCE TEST	TEMPERATURE : 85±2°C APPLIED CURRENT : PER SPEC. TIME : 500 HOURS	



TAMURA