

## 6.2 x 6.2mm Compact Tactile Switch

### Features

#### Optimized Mechanical Features

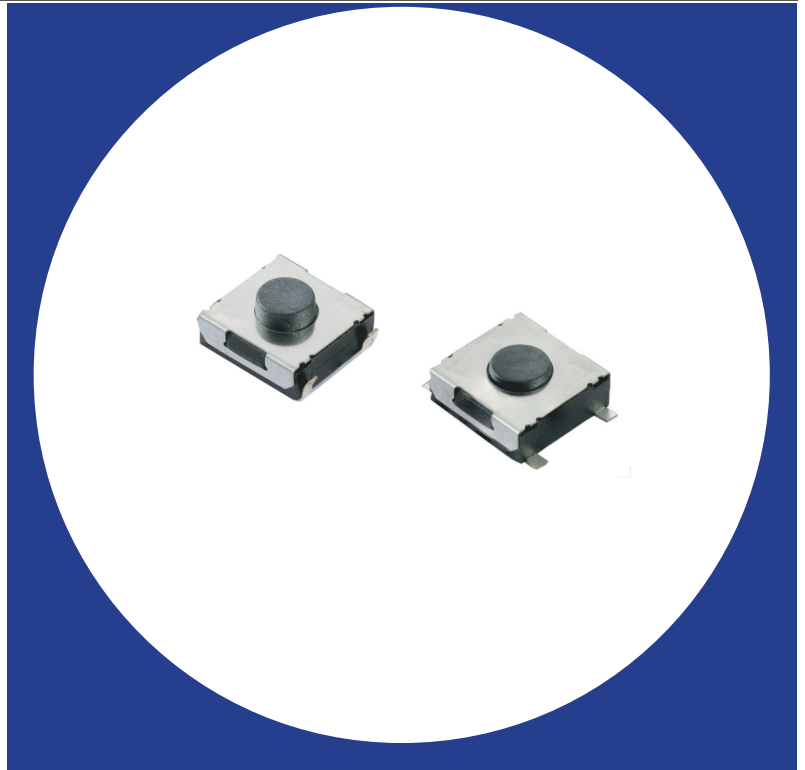
- Surface mount gull-wing and J bend terminal configurations
- Compatible with IR reflow and manual soldering
- Variety of operating force & actuator height options

#### Optimized Contact System

- Excellent tactile feedback

#### Materials

- Silver coated terminals for better solderability
- High temperature materials (UL94V-0)
- RoHS compliant



## Electrical and Mechanical Specifications

#### Switch Contact Resistance

100 milliohms maximum

#### Insulation Resistance

100 Megohms minimum between terminals

#### Maximum Rating

50mA, 12 VDC

#### Dielectric Strength

250 VAC for 1 minute between adjacent terminals

#### Operating Force

160 gf, 260 gf, or 360 gf

#### Travel

0.25  $\pm$ 0.2 mm

#### Operating Temperature

- 40°C to +85°C

#### Storage Temperature

- 40°C to +85°C

#### Actuator Strength

3 Kgf maximum

#### Actuation Life

160 gf: 1,000,000 cycles

260 gf: 500,000 cycles

360 gf: 200,000 cycles

#### Allowable Solder Time

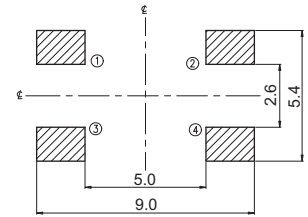
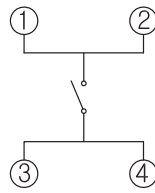
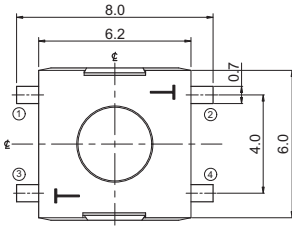
IR Reflow: Up to 5 seconds at 260°C.

Manual soldering: Up to 3 seconds at 350°C

#### Packaging

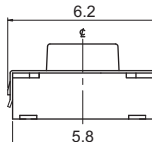
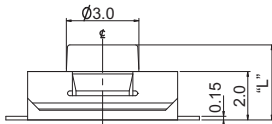
Standard: Tape and reel packaging with 330mm diameter reel and 16mm wide plastic tape

## CTS SERIES 222DM - Surface Mount Gull Wing, Without Ground Terminal



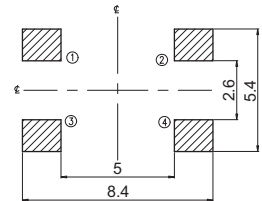
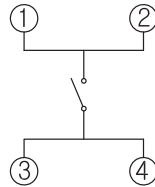
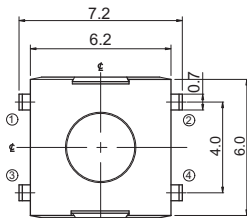
CIRCUIT DIAGRAM

PCB LAYOUT



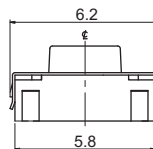
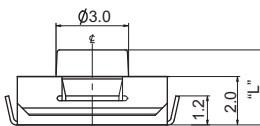
DIMENSION : mm  
STANDARD TOLERANCE :  
.X (1 PLACE) : ±0.30

## CTS SERIES 222DJ... - Surface Mount J Bend Terminal, Without Ground Terminal



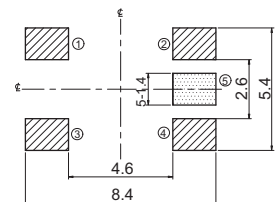
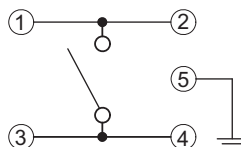
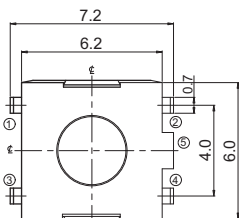
CIRCUIT DIAGRAM

PCB LAYOUT



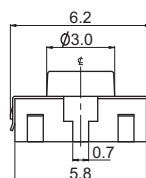
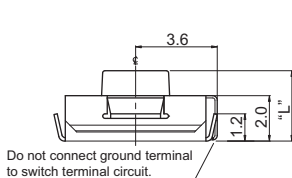
DIMENSION : mm  
STANDARD TOLERANCE :  
.X (1 PLACE) : ±0.30

## CTS SERIES 222DJ...G - Surface Mount J Bend Terminal, With Ground Terminal



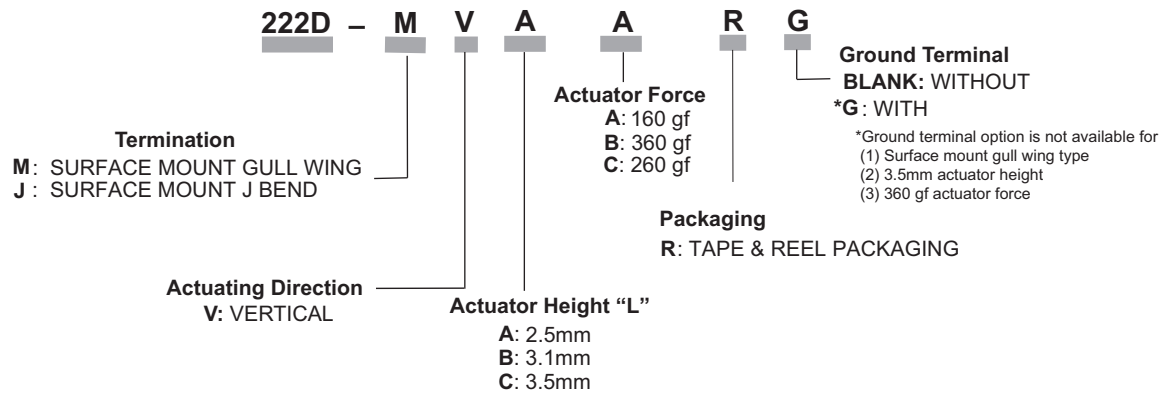
CIRCUIT DIAGRAM

PCB LAYOUT



DIMENSION : mm  
STANDARD TOLERANCE :  
.X (1 PLACE) : ±0.30

## Ordering Information



### Note:

Consult CTS for other common features not listed.