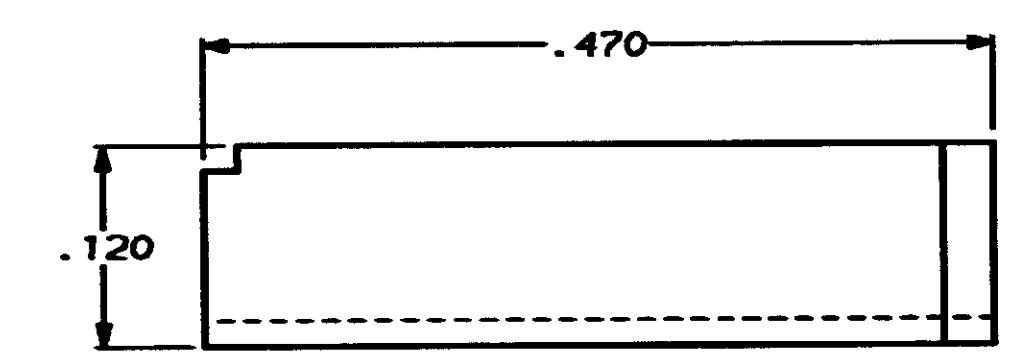
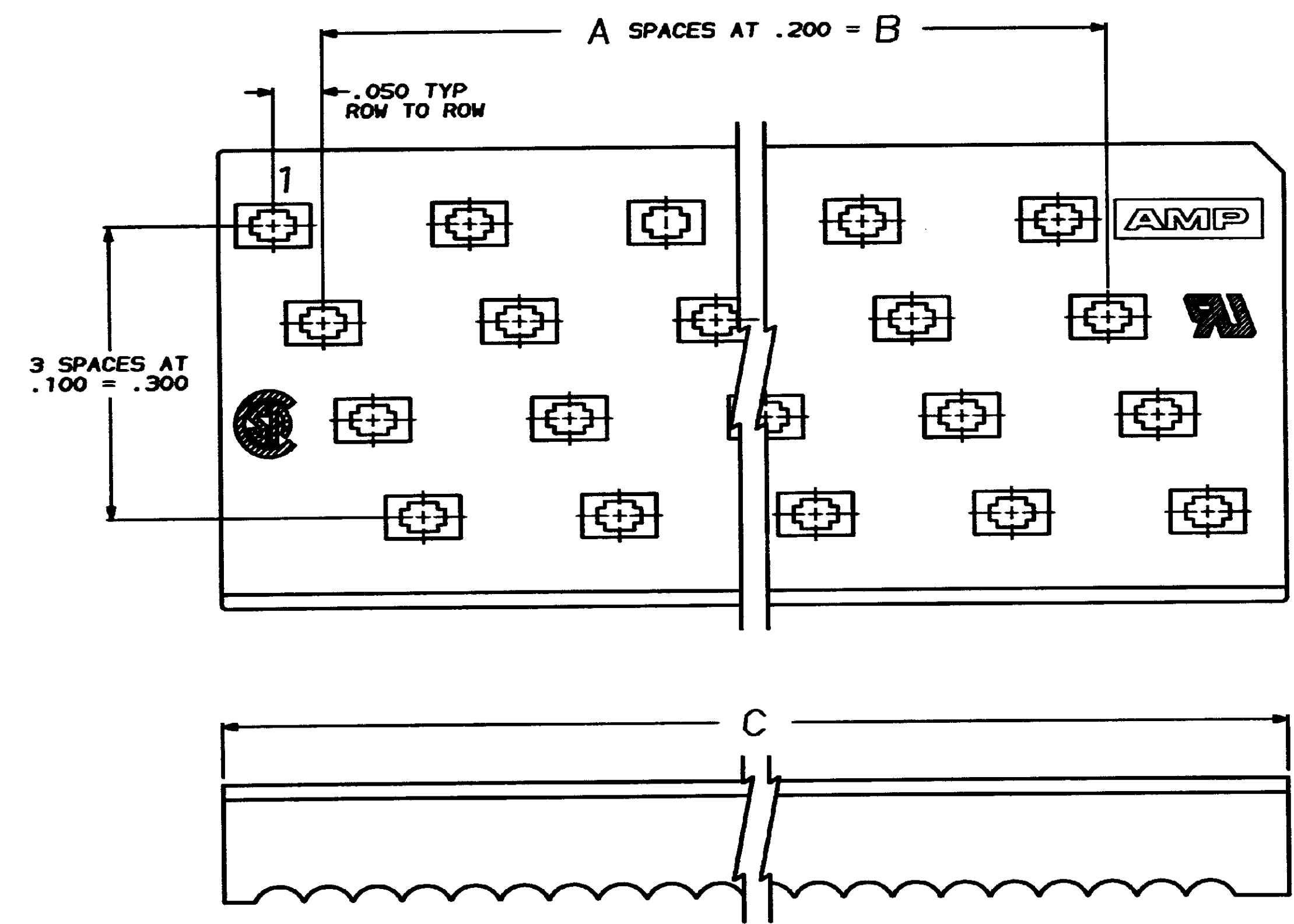


REVISONS				
REV	DATE	DESCRIPTION	DATE	APPR
0		RELEASED WAS 88-5130-2		
A		REVSD/ECN CF-1706		



3.086	2.800	14	60	1-111355-3
2.886	2.600	13	56	1- -2
2.686	2.400	12	52	1- -1
2.486	2.200	11	48	1- -0
2.286	2.000	10	44	-9
2.086	1.800	9	40	-8
1.886	1.600	8	36	-7
1.686	1.400	7	32	-6
1.486	1.200	6	28	-5
1.286	1.000	5	24	-4
1.086	.800	4	20	-3
.886	.600	3	16	-2
.686	.400	2	12	111355-1
C	B	A	NO OF POSN	PART NUMBER

DO NOT SCALE PRINT. UNLESS SPECIFIED DIMENSIONS IN INCHES TOLERANCES ON: 2 PLC DEC ± .005 3 PLC DEC ± .005 ANGLES ± 0°30'	DR - S WELDON 2-25-88 CHK - W.G. LENKER 2-25-88 APPR - M.A. VISELLI 2-25-88 APPR - D. HOFFMAN 2-25-88	AMP INCORPORATED Harrisburg, Pa. 17105
MATERIAL FLAME RETARDANT, 94 V-0 RATED, GLASS FILLED POLYESTER, COLOR, BLACK	NAME COVER, PADDLEBOARD, FULL ROW, AMP-LATCH	SIZE D 00779 SCALE 10:1
FINISH	APPLICATION SPEC	DRAWING NO 111355 SHEET - OF -

CUSTOMER DRAWING