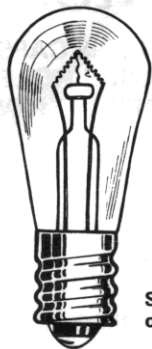


Large Incandescent Indicators

FOR MOUNTING IN 1" CLEARANCE HOLE
FOR 6 TO 250V OPERATION

These series indicator lights meet or exceed requirements of MIL-L-3661.

For materials and finishes of products in this group, see page 21D.

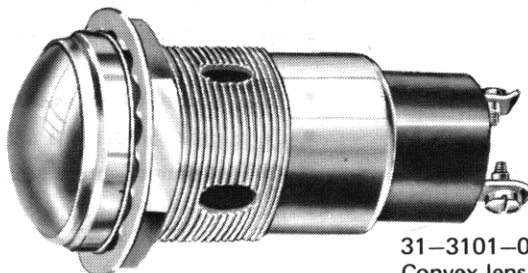


S-6
CANDELABRA
SCREW BASE

See lamp ratings
on page K.

Recognized under the component
program of Underwriters'
Laboratories Inc.

75W., 125V.

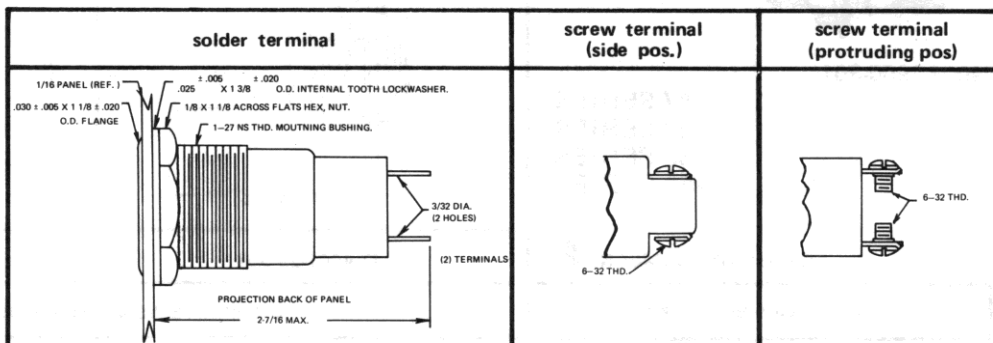


31-3101-0111-301
Convex lens

Also available with Bayonet lock lens cap,
contact factory for information.

WITH FRICTION-FIT LENS CAPS

31 SERIES



BASE PART NUMBERS

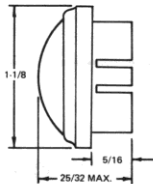
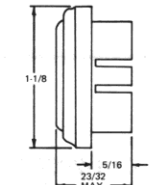
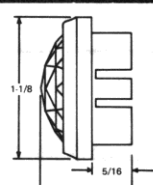
31-4001-01-101

31-0901-01-101

31-3101-01-101

CAP PART NUMBERS

COMPLETE ASSEMBLY PART NUMBERS

CAP PART NUMBERS	COMPLETE ASSEMBLY PART NUMBERS		
 <p>CONVEX 31-0111-300 back frosted 31-0131-300 unfrosted</p>	31-4001-0111-301	31-0901-0111-301	31-3101-0111-301
	31-4001-0131-301	31-0901-0131-301	31-3101-0131-301
 <p>FLAT 31-0211-300 back frosted 31-0231-300 unfrosted</p>	31-4001-0211-301	31-0901-0211-301	31-3101-0211-301
	31-4001-0231-301	31-0901-0231-301	31-3101-0231-301
 <p>FACETED 31-0431-300 unfrosted</p>	31-4001-0431-301	31-0901-0431-301	31-3101-0431-301

For legends on flat faced lens, see page P.

Part numbers shown in gray are normally
in inventory at your Dialight Distributor.

Order complete with lamp to be assured of receiving the
indicator light and correct lamp together for immediate use.