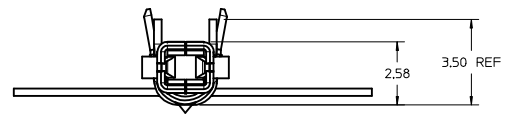
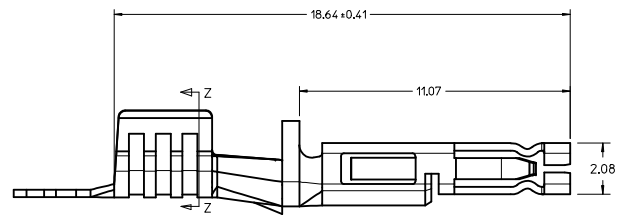
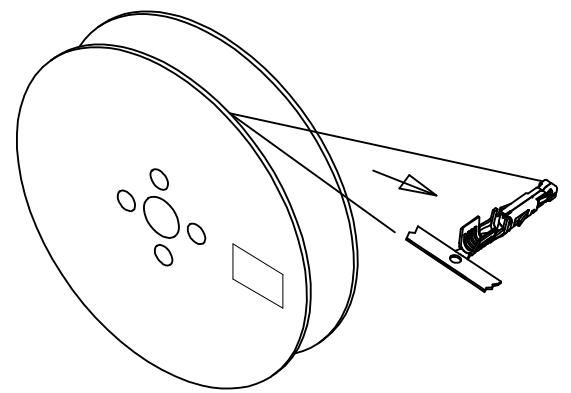
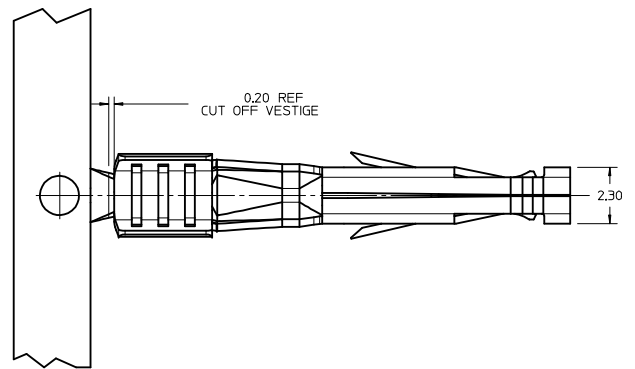
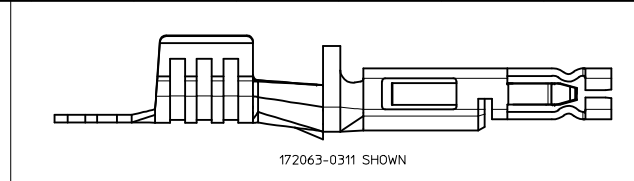
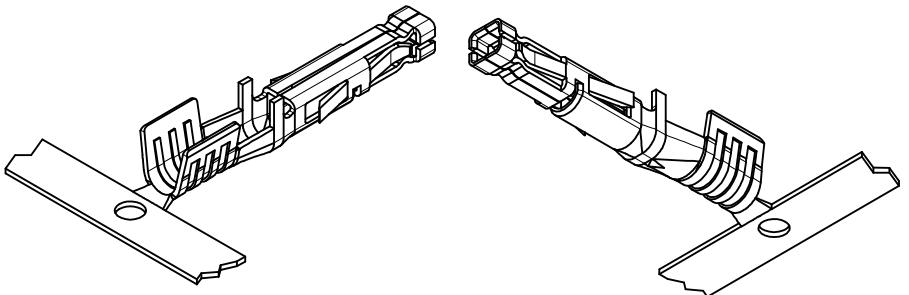
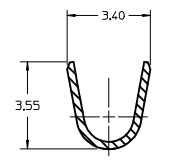


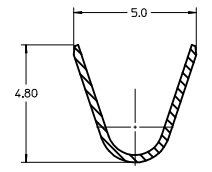
ITEM NO.	WIRE GAUGE (AWG)	WIRE GAUGE (METRIC)	PLATING	PACKAGING
172063-0311	14 OR 16 AWG	1.5mm <sup>2</sup>	15 GOLD	REEL
172063-0411	12 AWG	4.0 OR 2.5mm <sup>2</sup>	15 GOLD	LOOSE
172063-0312	14 OR 16 AWG	1.5mm <sup>2</sup>	30 GOLD	REEL
172063-0412	12 AWG	4.0 OR 2.5mm <sup>2</sup>	30 GOLD	LOOSE
172063-1311	14 OR 16 AWG	1.5mm <sup>2</sup>	TIN	REEL
172063-1312	12 AWG	4.0 OR 2.5mm <sup>2</sup>	TIN	LOOSE
76823-0321	14 OR 16 AWG	1.5mm <sup>2</sup>	TIN	REEL
76823-0421	12 AWG	4.0 OR 2.5mm <sup>2</sup>	TIN	LOOSE
76823-0322	14 OR 16 AWG	1.5mm <sup>2</sup>	TIN	REEL
76823-0422	12 AWG	4.0 OR 2.5mm <sup>2</sup>	TIN	LOOSE



76823-0321 SHOWN



SECTION Z-Z  
CONDUCTOR CRIMP 14/16 AWG



SECTION Z-Z  
CONDUCTOR CRIMP 12 AWG

NOTES:

- MATERIAL: HIGH CONDUCTIVITY COPPER ALLOY
- FINISH:  
(TIN) 152 MICROMETER / (60 MICROINCH) MINIMUM REFLOWED MATTE TIN OVER  
127 MICROMETER / (50 MICROINCH) MINIMUM NICKEL LUBRICANT ADDED TO CONTACT INTERFACE.  
(15 GOLD) 0.38 MICROMETER / (15 MICROINCH) MINIMUM SELECT GOLD AND  
2.54 MICROMETER / (100 MICROINCH) MINIMUM SELECT MATTE TIN OVER  
127 MICROMETER / (50 MICROINCH) MINIMUM NICKEL OVERALL.  
(30 GOLD) 0.76 MICROMETER / (30 MICROINCH) MINIMUM SELECT GOLD AND  
2.54 MICROMETER / (100 MICROINCH) MINIMUM SELECT MATTE TIN OVER  
127 MICROMETER / (50 MICROINCH) MINIMUM NICKEL OVERALL.
- PRODUCT SPECIFICATION: PS-76823-100
- PACKAGING REEL PER PK-76823-001.  
LOOSE PER PK-76823-002
- TERMINAL FOR USE WITH 170001 & 171692 SERIES RECEPTACLES.
- APPLICATION SPECIFICATION: AS-76823-100
- PART CONFORMS TO CLASS "B" REQUIREMENTS OF COSMETIC SPECIFICATION PS-45499-002.

<b>LOOSE P/INS</b> IEC NO. UICP2015-4832 DRAWINGS 2015/05/18 CHKD:JBELL 2015/05/18 APPR:FSM/TH 2015/06/15 REV DESCRIPTION	QUALITY SYMBOLS		GENERAL TOLERANCES (UNLESS SPECIFIED)		DIMENSION STYLE		SCALE	DESIGN UNITS	THIRD ANGLE
	▽=0	▽=0	▽=0	mm	INCH	MM ONLY	10:1	METRIC	☉
	4 PLACES ±---	3 PLACES ±---	2 PLACES ±0.25	±---	±---	DRAWN BY	DATE	TITLE	
	1 PLACE ±0.36	0 PLACE ±	±	±	CHKED BY	DATE	FEMALE CRIMP TERMINAL MEGA-FIT		
ANGULAR ±1/2°			DRAFT WHERE APPLICABLE MUST REMAIN WITHIN DIMENSIONS		MATERIAL NO.		DOCUMENT NO.		SHEET NO.
SEE CHART			SIZE D		SD-76823-0100		1 OF 1		