

MODEL: AMD-24V060WxyA

Summary

The AMD-24V060WxyA is the Medical Adapter from one of the world's largest power supply manufacturers -Delta.

The product offers a regulated output voltage of 24V, along with wide temperature range from 0°C to +40°C and a minimum holdup time of 15ms.

The state-of-the-art design is made to withstand medical equipment requirements. The rugged, ultra-compact plastic case with shock and vibration resistant.

Features:

- 60Watts Output Power.
- 100-240Vac Universal Input.
- AC Receptacle with C8 & C14 option (IEC320AC receptacle)
- Efficiency > 87%
- No load power consumption < 0.5W
- Energy star Compliant (Level V)
- Low leakage current
- Brownout & Brownout Recovery
- Medical safety standard compliant UL60601-11/EN60601-1/CSA60601-1
- MTBF: > 600,000 Hrs.

The 60 watts Medical power supply provides overvoltage, overload and over temperature protection.

Due to the wide input voltage range from 90 to 264Vac (Nominal input: 100Vac to 240 Vac), the Delta's medical power supply is worldwide usable.

The Input Socket & output connector are made for easy installation.



Technical Data

60W Medical Adapter	
Input Data (1)	
Nominal input voltage (wide-range input)	100V-240vac
Input Voltage range	90V-264vac
Frequency	47-63 Hz
Max Input Current	1.2A max @ 115 Vac, 0.7A max @ 230 Vac.
Inrush current limitation. I _t ² (+25 °C) typ.	40A @ 115vac & 80A @ 230Vac
Efficiency (at 115VAC and nominal values)	>87%
No load power consumption	>0.5W
Mains buffering at nominal load (typ.)	15 msec min @ 115 Vac
Turn-on time after applying the mains voltage	3Sec
Transient surge voltage protection	VARISTOR
Input fuse, internal (device protection)	T 3.15 AH / 250V
Discharge current to PE	< 0.25mA
Connection Method	Pluggable

Output Data (2)	
Nominal output voltage U _N / tolerance	24V ± 2%
Setting range of the output voltage	23.5V-24.5V
Nominal output current I _N with convection cooling:-20 to +50°C	2.5A
Max. power dissipation idling/nominal load approx.	60W
Ripple/ Noise (20 MHz)	<240mVpp @ +25 °C
Line Regulation	+ 0.5%
Load Regulation :	Exclude output cord : ± 1% Include output cord ± 5%
Protection :	Over current (Auto Recovery) Over Voltage (Latch) Over Temp (Latch)

Certification/Standards	
Electrical safety (of information technology equipment)	UR/cUR As per STD UL60601-1/CSA60601-1, CB scheme to EN/IEC60601-1, NEMKO EN60601-1 CE Mark LVD and EMC
RoHS Compliant	Yes



General Data	
MTBF	> 600,000 Hrs
Type of housing	Plastic Enclosed
Dimensions (W / H / D) + mounting rail	61W * 39.5H * 120L mm
Weight	0.28kg.
Climatic Data	
Ambient temperature (Operating)	0 °C to 40 °C
Ambient temperature (Storage)	-35 °C to + 85 °C
Humidity	5% to 95% non-condensing
In conformance with EMC guideline 89/336/EEC and low voltage directive 73/23/EEC	FCC (Title 47 Part 15 Class B), EN55022 (CISPR 22 Class B)
EMC (electromagnetic compatibility)	
Immunity to interference according to EN 61000-6-1	
<ul style="list-style-type: none"> EN 61000-4-2²⁾ Discharge of static electricity (ESD) 	Housing Contact discharge: Level 4 8 kV Air Discharge : 15 kV
<ul style="list-style-type: none"> EN 61000-4-3¹⁾ Electromagnetic HF field 	Housing Frequency/Field intensity: Level 3 80Hz – 1GHz / 10V/M, with 1kHz tone/80% modulation
<ul style="list-style-type: none"> EN 61000-4-4²⁾ Fast transients (Burst): 	Input Level 3 L,N,PE : 2kV ³⁾ Signal: -
<ul style="list-style-type: none"> EN 61000-4-5²⁾ Surge voltage capacities (Surge): 	Input : Level 3 Common Mode : 2kV ³⁾ Differential Mode : 1kV ⁴⁾
<ul style="list-style-type: none"> EN 61000-4-6¹⁾ Conducted disturbance 	I/O: Level 3 Frequency / U _o : 0.15MHz - 80MHz / 10Vrms.
<ul style="list-style-type: none"> EN 61000-4-11²⁾ Voltage dips 	Self recoverable, No damage
Noise emission according to EN 61000-6-3	
<ul style="list-style-type: none"> Emitted radio interface Radio interference voltage 	EN55011 (EN55022) CLASS B ⁵⁾ EN55011 (EN55022) CLASS B ⁵⁾
EN55011 corresponds to CISPR11 / EN55022 corresponds to CISPR22 / EM 61000 corresponds to IEC 1000 1) Criterion A: Normal operating behavior within the defined limits. 2) Criterion B: Temporary impairment to operational behavior that is corrected by the device itself. 3) Symmetrical: Conductor to conductor. 4) Asymmetrical: Conductor to ground. 5) Class B: Area of application industry and residential	

Numbering for Medical Adapter

For example: **AMD-24V060WxyA**

XX X XXXX XXXX X XX

XX.....**Product Type**

AM	Medical Adapter
----	-----------------

XX **X** XXXX XXXX X XX

X.....**Model**

D	Desktop
---	---------

XX X **XXXX** XXXX X XX

XXXX.....**Voltage**

24V	24 Voltage
-----	------------

XX X XXXX **XXXX** X XX

XXXX.....**Watt**

030W	30 Watt
060W	60 Watt
080W	80 Watt

XX X XXXX XXXX **X** XX

X.....**Input Configuration**

2	2 PIN AC
3	3 PIN AC

XX X XXXX XXXX X **X** X

X.....**Connector Type**

A	Inner diameter 2,5 mm
B	Inner diameter 2,1 mm

*** **Outer Diameter 5,5 mm.**

XX X XXXX XXXX XX **X**

X.....**Variation**

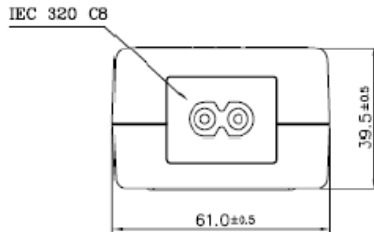
(Eg, Customer, material Etc.)

A	Delta Standard - product
---	--------------------------

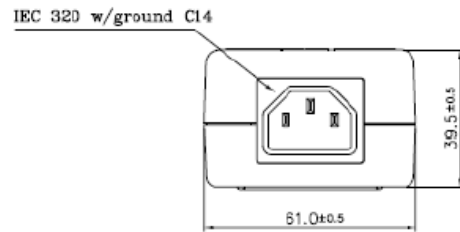
Mechanical drawing

Input Configuration

2-Pin AC

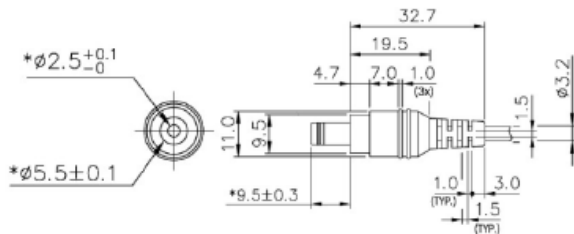


3-Pin AC

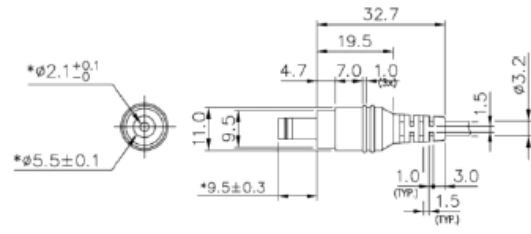


Connector

A



B



Mechanical Specification

