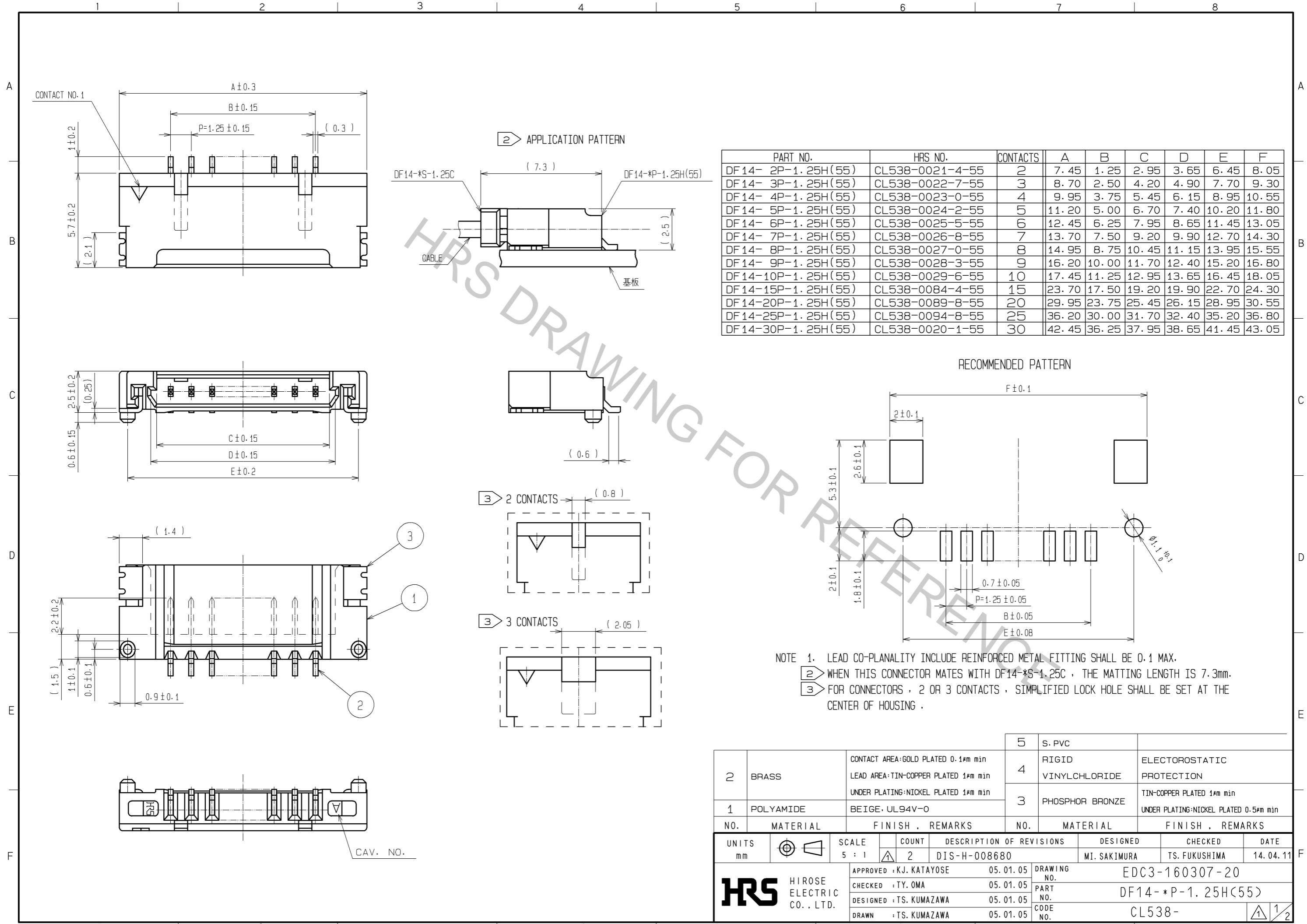


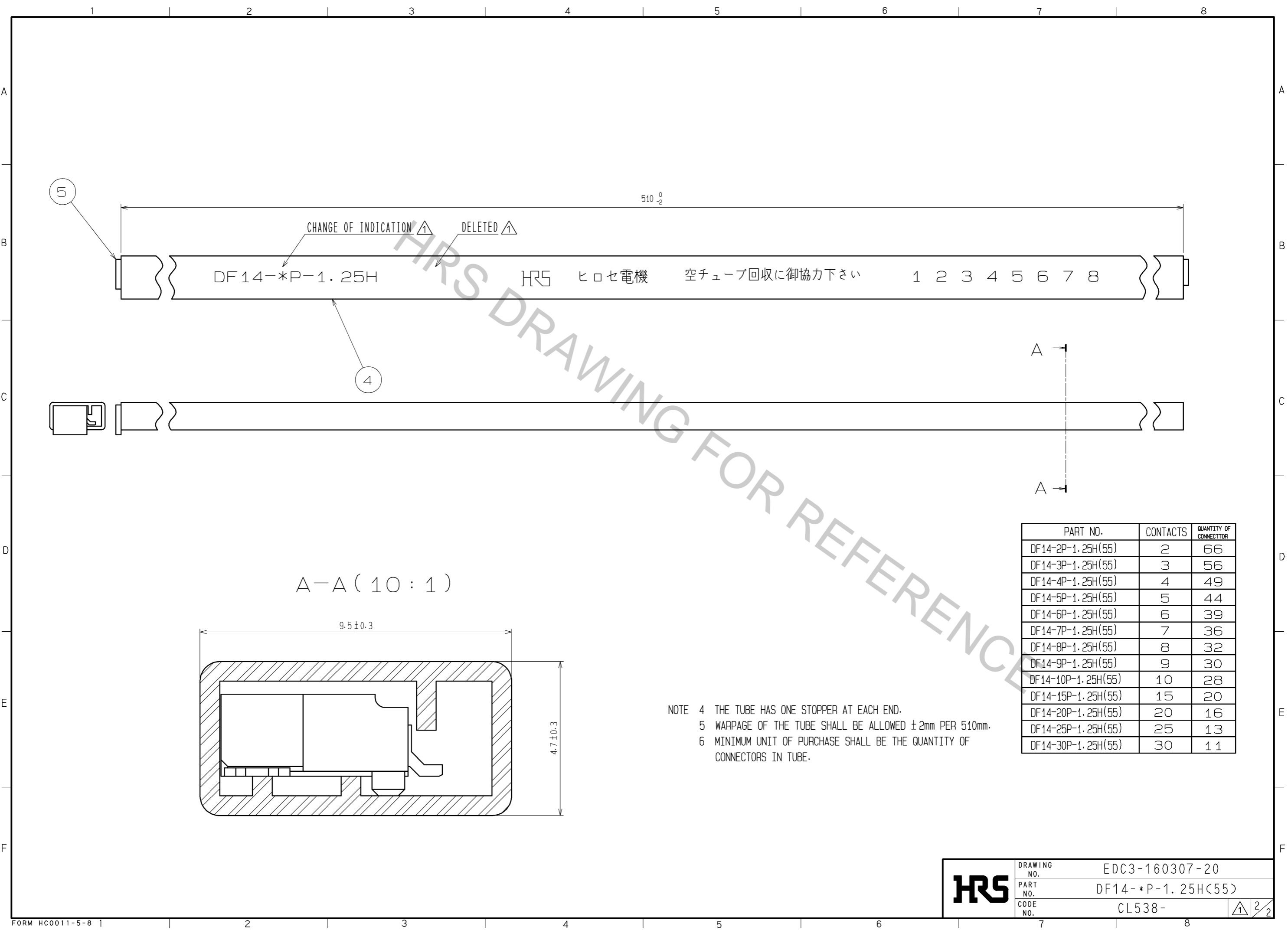
Nov.1.2016 Copyright 2016 HIROSE ELECTRIC CO., LTD. All Rights Reserved.



| NO. | MATERIAL | FINISH . REMARKS | NO. | MATERIAL | FINISH . REMARKS |
|-----|-----------|--|-----|---------------------|--|
| 2 | BRASS | CONTACT AREA:GOLD PLATED 0.1µm min LEAD AREA:TIN-COPPER PLATED 1µm min UNDER PLATING:NICKEL PLATED 1µm min | 5 | S. PVC | |
| 1 | POLYAMIDE | BEIGE . UL94V-0 | 4 | RIGID VINYLCHLORIDE | ELECTROSTATIC PROTECTION |
| | | | 3 | PHOSPHOR BRONZE | TIN-COPPER PLATED 1µm min UNDER PLATING:NICKEL PLATED 0.5µm min |

| UNITS | SCALE | COUNT | DESCRIPTION OF REVISIONS | DESIGNED | CHECKED | DATE |
|-------|-------|-------|--------------------------|--------------|---------------|------------|
| mm | 5 : 1 | 2 | DIS-H-008680 | MI. SAKIMURA | TS. FUKUSHIMA | 14. 04. 11 |

| APPROVED | DATE | DRAWING NO. |
|---------------|------------|---------------------|
| :KJ. KATAYOSE | 05. 01. 05 | EDC3-160307-20 |
| CHECKED | DATE | PART NO. |
| :TY. OMA | 05. 01. 05 | DF14- *P-1. 25H(55) |
| DESIGNED | DATE | CODE NO. |
| :TS. KUMAZAWA | 05. 01. 05 | CL538- |
| DRAWN | DATE | |
| :TS. KUMAZAWA | 05. 01. 05 | |



DF 14-*P-1.25H

HRS ヒロセ電機 空チューブ回収に御協力下さい

1 2 3 4 5 6 7 8

510 ⁰/₋₂

A-A (10:1)

9.5±0.3

4.7±0.3

- NOTE 4 THE TUBE HAS ONE STOPPER AT EACH END.
 5 WARPAGE OF THE TUBE SHALL BE ALLOWED ±2mm PER 510mm.
 6 MINIMUM UNIT OF PURCHASE SHALL BE THE QUANTITY OF CONNECTORS IN TUBE.

| PART NO. | CONTACTS | QUANTITY OF CONNECTOR |
|--------------------|----------|-----------------------|
| DF14-2P-1.25H(55) | 2 | 66 |
| DF14-3P-1.25H(55) | 3 | 56 |
| DF14-4P-1.25H(55) | 4 | 49 |
| DF14-5P-1.25H(55) | 5 | 44 |
| DF14-6P-1.25H(55) | 6 | 39 |
| DF14-7P-1.25H(55) | 7 | 36 |
| DF14-8P-1.25H(55) | 8 | 32 |
| DF14-9P-1.25H(55) | 9 | 30 |
| DF14-10P-1.25H(55) | 10 | 28 |
| DF14-15P-1.25H(55) | 15 | 20 |
| DF14-20P-1.25H(55) | 20 | 16 |
| DF14-25P-1.25H(55) | 25 | 13 |
| DF14-30P-1.25H(55) | 30 | 11 |

| | | |
|------------|-------------|-------------------|
| HRS | DRAWING NO. | EDC3-160307-20 |
| | PART NO. | DF14-*P-1.25H(55) |
| | CODE NO. | CL538- |
| | | 2/2 |