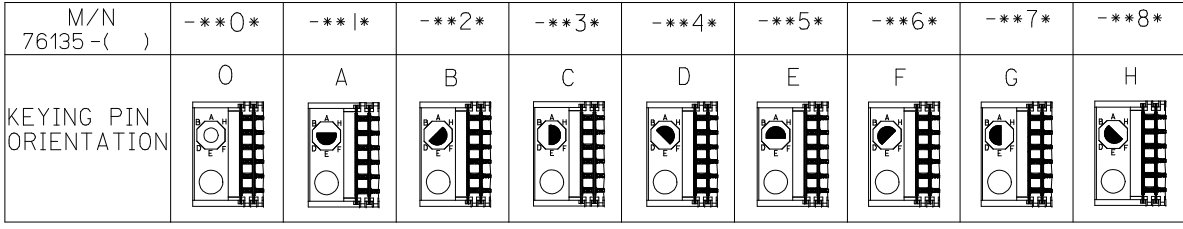


- NOTES:
- MATERIALS:
HOUSING - LIQUID CRYSTAL POLYMER (LCP)
GLASS FILLED, UL94V-0, BLACK
SIGNAL PIN AND SHIELD - COPPER ALLOY
 - FINISHES:
CONTACT AREA - SELECTIVE GOLD (Au)
PCB TAILS - SELECTIVE MATTE TIN (Sn)
 - THIS PART CONFORMS TO MOLEX PRODUCT SPECIFICATION PS-74031-999.
 - FOR MIXED CONTACT LENGTH CONTACT MOLEX FOR AVAILABILITY.
 - FOR SPECIFIC MATERIAL NUMBERS AND MATING INFORMATION REFER TO SHEET 2.
 - PACKAGE PER PK-74061-003.
 - ASSEMBLY WILL BE MARKED WITH P/N AND DATE CODE WITH LASER MARK ON SIDE OF HOUSING OR BY LABEL ON THE TUBE.
 - MAPS (MOLEX ADVANCED PLATING SYSTEM).

THE PRIMARY CARTON WITH A LABEL STATING "ELV AND RoHS COMPLAINT" IS LEAD FREE. CARTONS WITHOUT THIS LABEL MAY CONTAIN LEAD.

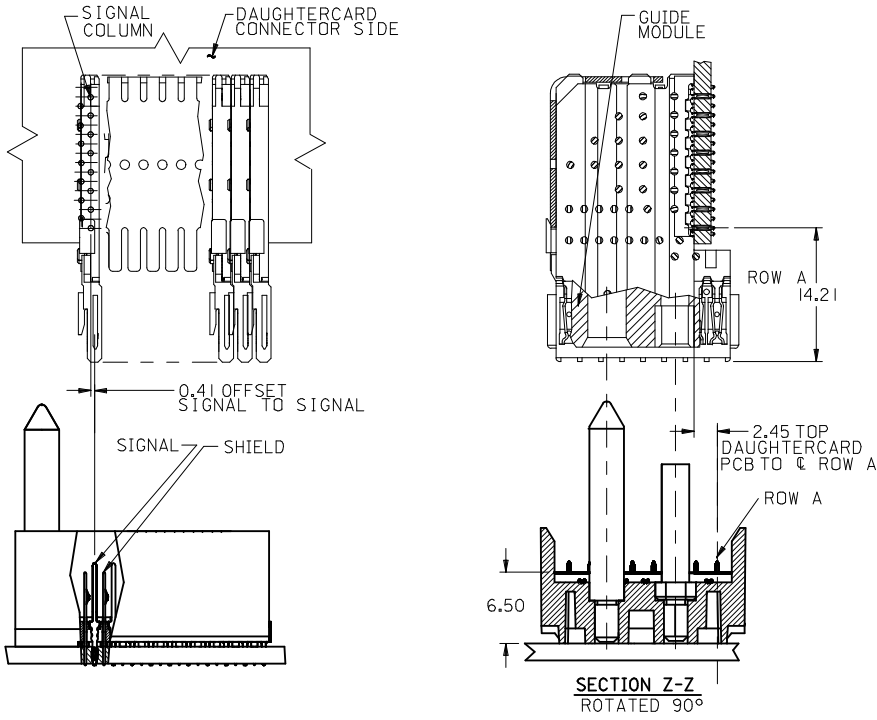
LEAD FREE CONVERSION EC NO: UCP2013-0687 DRWNS:DANIELLEY 2010/03/08 CHKD:J.MELTON 2010/03/08 APPR:SMILLER 2012/12/14	QUALITY SYMBOLS ▽=0 ▽=0 ▽=0	GENERAL TOLERANCES (UNLESS SPECIFIED)		DIMENSION STYLE MM ONLY	SCALE 3:1	DESIGN UNITS METRIC	THIRD ANGLE PROJECTION									
		4 PLACES ± --- ± ---	3 PLACES ± --- ± ---	2 PLACES ± 0.15 ± ---	1 PLACE ± 0.25 ± ---	0 PLACE ± --- ± ---	ANGULAR ±1/2°	DRAFT WHERE APPLICABLE MUST REMAIN WITHIN DIMENSIONS	DRAWN BY J.JONIAK	DATE 2008/04/11	CHECKED BY BINGHAM	DATE 2008/04/11	APPROVED BY BINGHAM	DATE 2008/04/11	TITLE VHDM H-SERIES 8 ROW SIGNAL END BACKPLANE SALES DRAWING	molex
REV B	DESCRIPTION	SIZE C		SEE SHT.2		THIS DRAWING CONTAINS INFORMATION THAT IS PROPRIETARY TO MOLEX INCORPORATED AND SHOULD NOT BE USED WITHOUT WRITTEN PERMISSION										



76135 - * * * *

CONTACT LOAD
(PIN HEIGHT)
1 & 6 = 4.75
2 & 7 = 6.25
3 & 8 = 4.25
4 & 9 = 5.15

NUMBER OF COLUMNS/PLATING
10 = 10 COLUMN MATTE TIN (FORMERLY TIN/LEAD)
25 = 25 COLUMN MATTE TIN (FORMERLY TIN/LEAD)
60 = 10 COLUMN MATTE TIN
75 = 25 COLUMN MATTE TIN
90 = 10 COLUMN MATTE TIN
85 = 25 COLUMN MATTE TIN



PART NUMBER	COLUMN	NUMBER OF SIGNAL PIN	NUMBER OF SHIELD	A	B	M	GOLD THICKNESS MICROMETER	TIN THICKNESS MICROMETER
76135-60*1	10	80	10	27.00	18.00	4.75	0.25 MAPS	0.76
76135-0*1							1.27	
76135-0*6							0.25 MAPS	
76135-75*1	25	200	25	57.00	48.00	6.25	0.76	1.27
76135-5*1							0.25 MAPS	
76135-5*6							0.76	
76135-60*2	10	80	10	27.00	18.00	4.25	0.25 MAPS	0.76
76135-0*2							1.27	
76135-0*7							0.25 MAPS	
76135-75*2	25	200	25	57.00	48.00	6.25	0.76	1.27
76135-5*2							0.25 MAPS	
76135-5*7							0.76	
76135-60*3	10	80	10	27.00	18.00	5.15	0.25 MAPS	0.76
76135-0*3							1.27	
76135-0*8							0.25 MAPS	
76135-75*3	25	200	25	57.00	48.00	6.25	0.76	1.27
76135-5*3							0.25 MAPS	
76135-5*8							0.76	
76135-60*4	10	80	10	27.00	18.00	4.75	0.25 MAPS	0.76
76135-0*4							1.27	
76135-0*9							0.25 MAPS	
76135-75*4	25	200	25	57.00	48.00	6.25	0.76	1.27
76135-5*4							0.25 MAPS	
76135-5*9							0.76	

SEE SHEET 1
EC NO: UCP2013-0687
DRAWN:SDANNELLEY 2010/03/08
CHKD:JMELTON 2010/03/08
APPR:SMILLER

QUALITY SYMBOLS	GENERAL TOLERANCES (UNLESS SPECIFIED)	DIMENSION STYLE	SCALE	DESIGN UNITS	THIRD ANGLE PROJECTION
▽=0	mm INCH	MM ONLY	3:1	METRIC	
▽=0	4 PLACES ± --- ± ---	DRAWN BY	DATE	TITLE	
▽=0	3 PLACES ± --- ± ---	JJONIAK	2008/04/11	VHDM H-SERIES 8 ROW SIGNAL END BACKPLANE SALES DRAWING	
	2 PLACES ± 0.15 ± ---	CHECKED BY	DATE		
	1 PLACE ± 0.25 ± ---	BINGHAM	2008/04/11		
	0 PLACE ± --- ± ---	APPROVED BY	DATE		
		BINGHAM	2008/04/11		
	ANGULAR ±1/2°	MATERIAL NO.	DOCUMENT NO.		
	DRAFT WHERE APPLICABLE MUST REMAIN WITHIN DIMENSIONS	SEE TABLE	SD-76135-001		
		SIZE	THIS DRAWING CONTAINS INFORMATION THAT IS PROPRIETARY TO MOLEX INCORPORATED AND SHOULD NOT BE USED WITHOUT WRITTEN PERMISSION		SHEET NO. 2 OF 2

molex