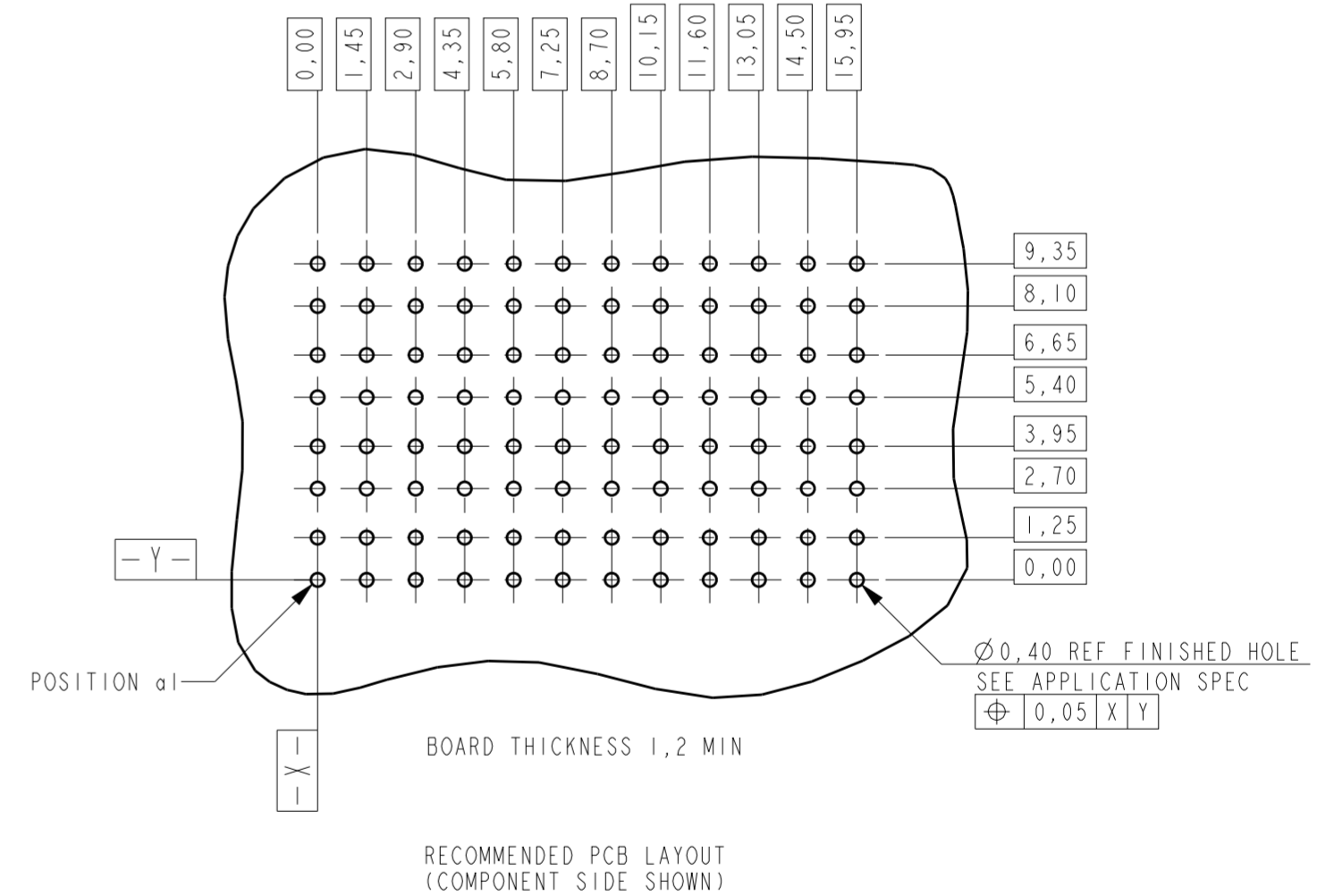
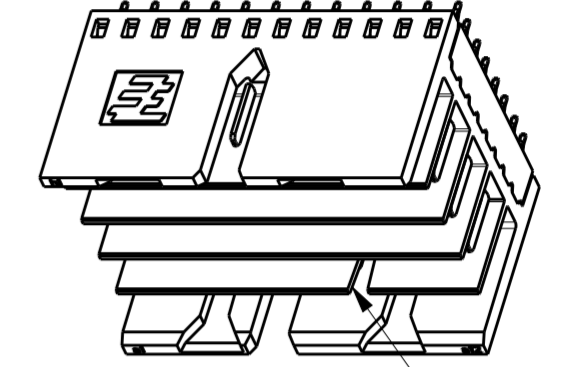
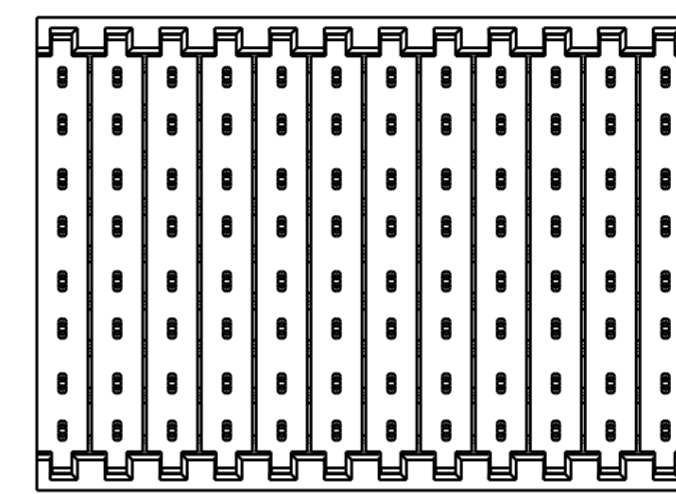
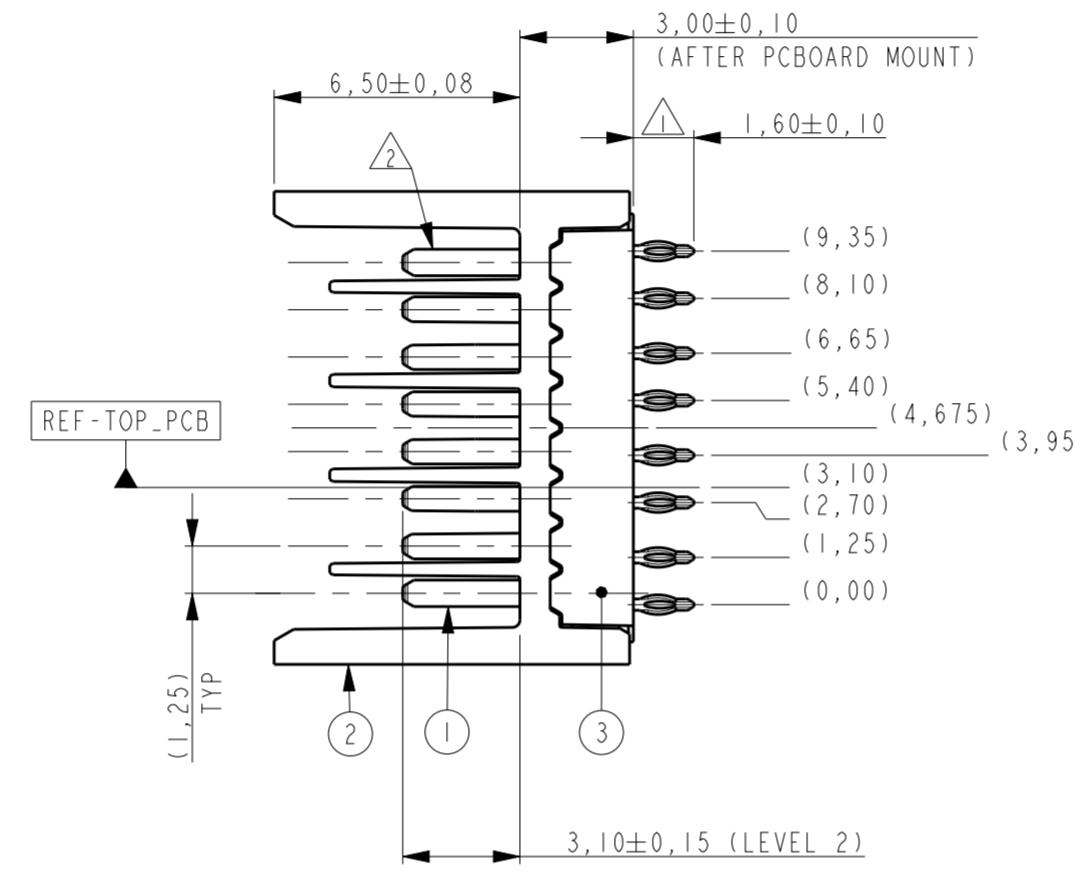
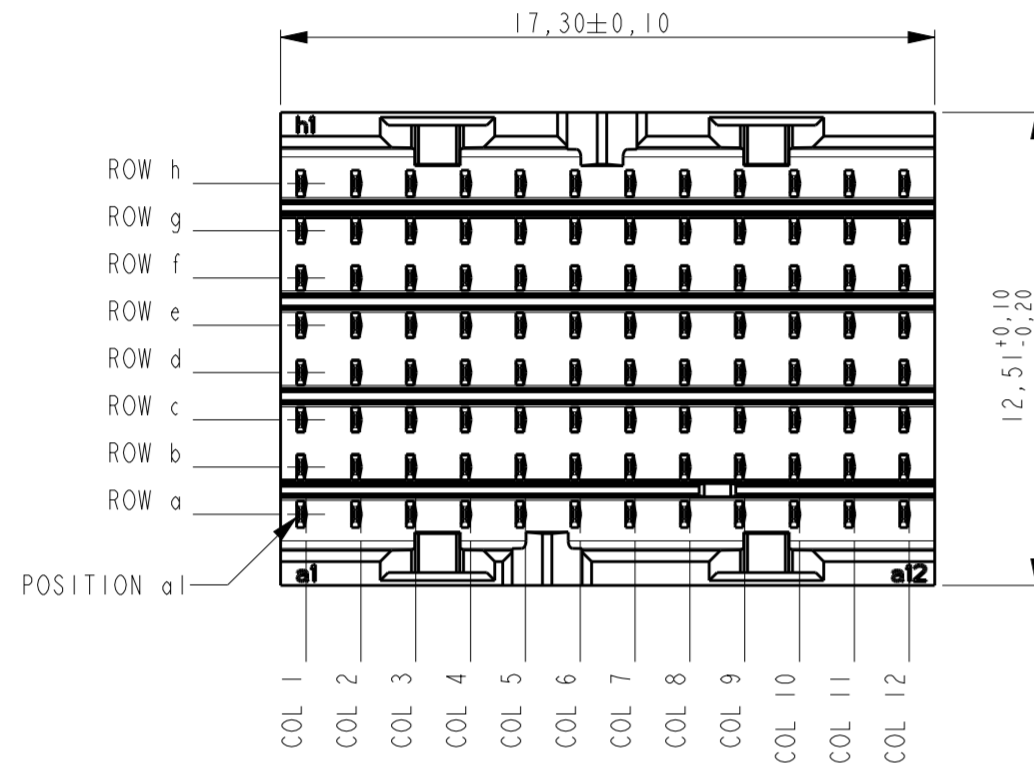
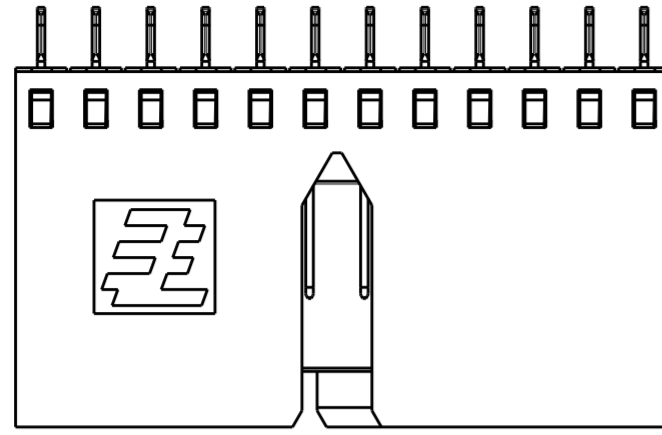


THIS DRAWING IS UNPUBLISHED. RELEASED FOR PUBLICATION
 © COPYRIGHT - BY TYCO ELECTRONICS CORPORATION. ALL RIGHTS RESERVED.

LOC		DIST		REVISIONS			
P	LTR	DESCRIPTION	DATE	DWN	APVD		
	A	DRAWING RELEASED PER ECR-11-017294	22AUG2011	JvdH	TdB		
	B	ADDED TOLERANCES PER ECR-13-006546	17APR2013	JvdH	GJV		
	C	REVISED PER ECR-13-017996	11DEC2015	FL	FY		



NOTES:
 △ PLATING: 0,5µm MIN. TIN OVER NICKEL.
 △ PLATING:

PARTNUMBER	PERFORMANCE LEVEL
2042088-1	PERFORMANCE LEVEL 1: CONNECTOR TESTED AND QUALIFIED AGAINST TELCORDIA GR-1217-CORE QUALITY LEVEL III: UNCONTROLLED ENVIRONMENT APPLICATIONS. SEE PRODUCT SPEC 108-19353
2042088-2	PERFORMANCE LEVEL 2: CONFORMS TO ALL TESTING ACCORDING PRODUCT SPEC 108-19320, -250 MATING CYCLES, 4 DAYS MIXED GAS TEST PER IEC 60068-2-60 METHOD 1

3 CONSULT APPLICATION SPEC OR CONTACT TE CONNECTIVITY FOR PERMISSIBLE CONTACT ASSIGNMENTS.
 △ CONNECTOR MARKED WITH PARTNUMBER AND DATE CODE.

THIS DRAWING IS A CONTROLLED DOCUMENT.		DWN	3 Jan 08
DIMENSIONS: mm		CHK	3 Jan 08
TOLERANCES UNLESS OTHERWISE SPECIFIED:		APVD	3 Jan 08
0 PLC ±		J. BROEKSTEEG	
1 PLC ±		PRODUCT SPEC	
2 PLC ±		SEE NOTE 2	
3 PLC ±		APPLICATION SPEC	
4 PLC ±		114-19106	
ANGLES ±		WEIGHT -	
FINISH ±		CUSTOMER DRAWING	

3	OVERMOLD	LCP 30% GF NATURAL
2	HOUSING	LCP 30% GF NATURAL
1	CONTACT	COPPER ALLOY
ITEM NO.	DESCRIPTION	MATERIAL
STE TE Connectivity		
NAME: MALE CONNECTOR Z-PACK Slim UHD		
SIZE	CAGE CODE	DRAWING NO
A2	00779	C-2042088
SCALE	SHEET	REV
5:1	1 OF 1	C