

# PRELIMINARY

## 5.5 GHz Band Pass Filter

**P/N 5450BP15T600**

Detail Specification: 06/05/07

Page 1 of 2

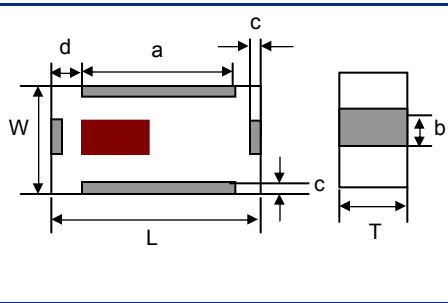
### General Specifications

<b>Part Number</b>	5450BP15T600	
<b>Frequency (MHz)</b>	5150 - 5750	
<b>Insertion Loss</b>	5.0 dB max.	
<b>Return Loss</b>	9.5 dB min.	
<b>Attenuation (min.)</b>	0 ~ 4000MHz	10 dB
<b>Attenuation (min.)</b>	6750 ~ 7000MHz	20 dB
<b>Attenuation (min.)</b>	7000 ~ 7250MHz	20 dB
<b>Attenuation (min.)</b>	7250 ~ 7500MHz	15 dB
<b>Attenuation (min.)</b>	7500 ~ 12000MHz	10 dB

<b>Input Power</b>	500 mW max.
<b>Impedance</b>	50 Ω
<b>Operating Temperature</b>	-40 to +85°C
<b>Storage Temperature</b>	-40 to +85°C
<b>Reel Quantity</b>	4,000
<b>MSL</b>	2

### Mechanical Dimensions

	In	mm
<b>L</b>	0.079 ± 0.006	2.00 ± 0.15
<b>W</b>	0.049 ± 0.004	1.25 ± 0.10
<b>T</b>	0.037 ± 0.004	0.95 ± 0.10
<b>a</b>	0.051 ± 0.006	1.30 ± 0.15
<b>b</b>	0.012 ± 0.006	0.30 ± 0.15
<b>c</b>	0.010 ± 0.006	0.25 ± 0.15
<b>g</b>	0.014 ± 0.006	0.35 ± 0.15



### Terminal Configuration

No.	Function
1	GND
2	OUT
3	GND
4	IN

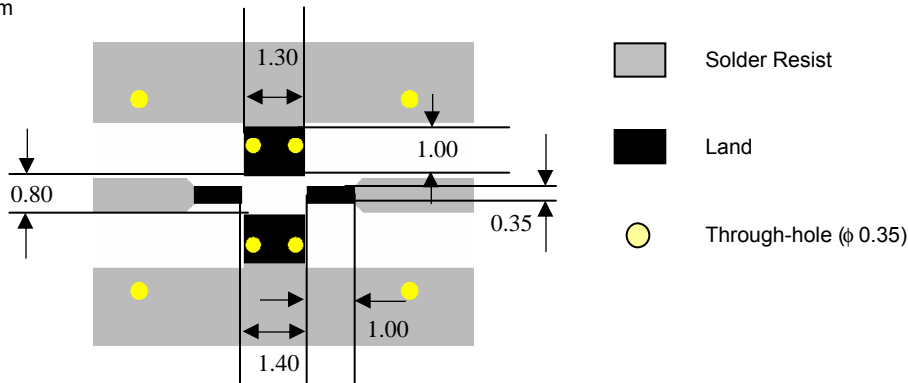
The diagram shows a rectangular component with four terminals. Terminal 1 is at the top, terminal 2 is on the right, terminal 3 is at the bottom, and terminal 4 is on the left. A red rectangle is centered on the component.

### Mounting Considerations

Mount these devices with brown mark facing up.

\* Line width should be designed to provide 50Ω impedance matching characteristics.

Units: mm



Johanson Technology, Inc. reserves the right to make design changes without notice.

All sales are subject to Johanson Technology, Inc. terms and conditions.



[www.johansontechnology.com](http://www.johansontechnology.com)

4001 Calle Tecate • Camarillo, CA 93012 • TEL 805.389.1166 FAX 805.389.1821

2003 Johanson Technology, Inc. All Rights Reserved

# PRELIMINARY

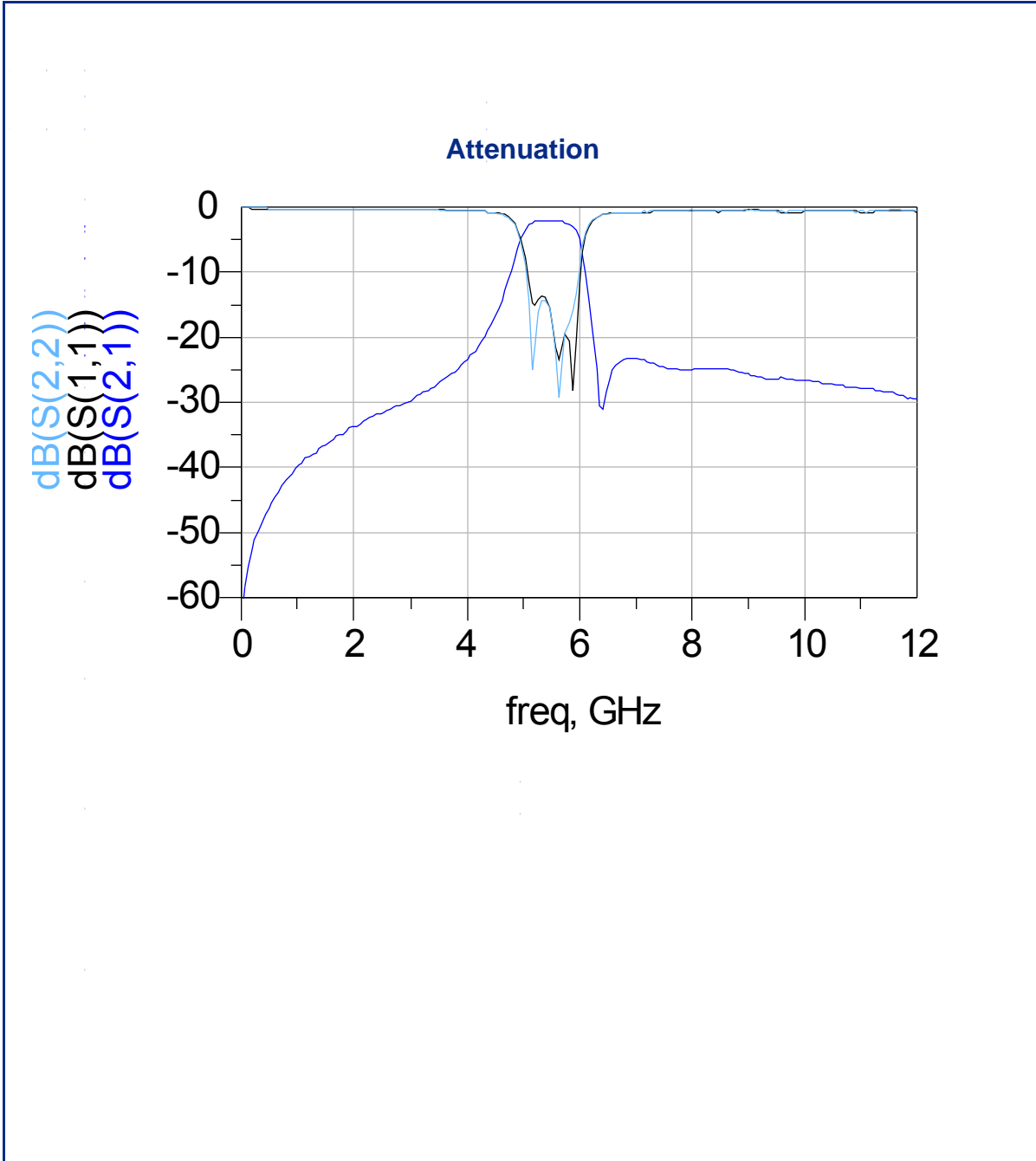
5.5 GHz Band Pass Filter

P/N 5450BP15T600

Detail Specification: 06/05/07

Page 2 of 2

Typical Electrical Performance (T=25°C)



Johanson Technology, Inc. reserves the right to make design changes without notice.

All sales are subject to Johanson Technology, Inc. terms and conditions.



[www.johansontechnology.com](http://www.johansontechnology.com)

4001 Calle Tecate • Camarillo, CA 93012 • TEL 805.389.1166 FAX 805.389.1821

2003 Johanson Technology, Inc. All Rights Reserved