



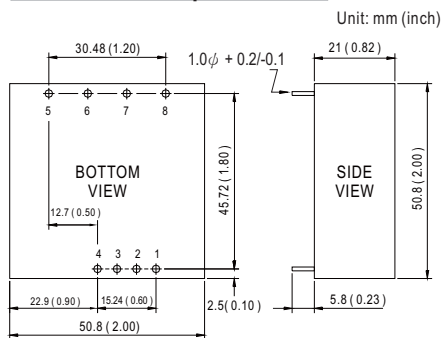
- Features :
 - 2:1 wide input range
 - 4:1 wide input range(option)
 - 1000VDC I/O isolation
 - Built-in EMI filter
 - Trimming output(±10%)
 - Remote ON-OFF control
 - Protections: Short circuit / Overload
 - Cooling by free air convection
 - Six-sided shield metal case
 - Epoxy encapsulated
 - 100% burn-in test
 - Approvals: FCC / CE
 - 2 years warranty



SPECIFICATION

ORDER NO.	DKA30A-05	DKA30B-05	DKA30C-05	DKA30A-12	DKA30B-12	DKA30C-12	DKA30A-15	DKA30B-15	DKA30C-15	
OUTPUT	DC VOLTAGE			±5V			±12V			±15V
	CURRENT RANGE			±250 ~ ±2500mA			±125 ~ ±1250mA			±100 ~ ±1000mA
	RATED POWER			25W			30W			30W
	RIPPLE & NOISE (max.) Note.2			100mVp-p						
	LINE REGULATION Note.3			±0.5%						
	LOAD REGULATION Note.4			±0.5%						
	VOLTAGE ACCURACY			±2.0%						
	SWITCHING FREQUENCY			100KHz min.						
EXTERNAL TRIM Adj. RANGE			±10%							
INPUT	VOLTAGE RANGE A: 9 ~ 18VDC B: 18 ~ 36VDC C: 36 ~ 72VDC									
	EFFICIENCY (Typ.) 80% 80% 80% 80% 83% 81% 80% 83% 81%									
	DC CURRENT Full load A: 3.2A B: 1.5A C: 0.77A No load A: 40mA B: 20mA C: 10mA									
	FILTER Pi network									
	PROTECTION Fuse recommended									
PROTECTION (Note. 5)	OVERLOAD 110 ~ 250% rated output power Protection type : Hiccup mode, recovers automatically after fault condition is removed									
	SHORT CIRCUIT All output equipped with short circuit Protection type : Hiccup mode, recovers automatically after fault condition is removed									
ENVIRONMENT	WORKING TEMP. -40 ~ +85°C (Refer to "Derating Curve")									
	WORKING HUMIDITY 20% ~ 90% RH non-condensing									
	STORAGE TEMP., HUMIDITY -40 ~ +105°C, 10 ~ 95% RH									
	TEMP. COEFFICIENT ±0.03% / °C(0 ~ 50°C)									
	VIBRATION 10 ~ 500Hz, 2G 10min./1 cycle, period for 60min. each along X, Y, Z axes									
SAFETY & EMC	SAFETY STANDARDS EAC TP TC 004 approved									
	WITHSTAND VOLTAGE I/P-O/P:1KVDC									
	ISOLATION RESISTANCE I/P-O/P: 100M Ohms / 500VDC / 25°C / 70% RH									
	EMC EMISSION Compliance to EN55032 Class A, FCC part 15 Class A, EAC TP TC 020									
	EMC IMMUNITY Compliance to EN61000-4-2,3,4,5,6,8, light industry level, criteria A, EAC TP TC 020									
OTHERS	REMOTE CONTROL Power on: R.C ~ -Vin > 4.5~5.5VDC or open, Power off : R.C~ -Vin <0.8VDC or short									
	MTBF 100Khrs min. MIL-HDBK-217F (25°C)									
	DIMENSION 50.8*50.8*21.0mm or 2**2**0.82" inch (L*W*H)									
	WEIGHT 110g									

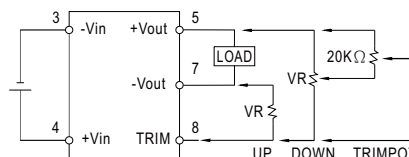
Mechanical Specification



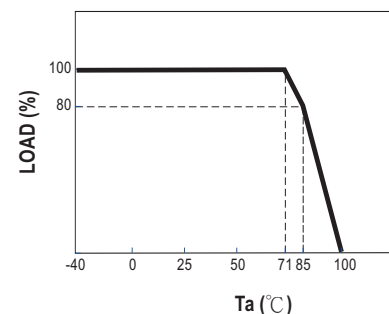
Pin Configuration

Pin No.	Output	Pin No.	Output
1	R.C	5	+Vout
2	No Pin	6	COM
3	-Vin	7	-Vout
4	+Vin	8	TRIM

External Output Trimming



Derating Curve



NOTE

- All parameters are specified at normal input, rated load, 25°C 70% RH ambient.
- Ripple & noise are measured at 20MHz by using a 12" twisted pair terminated with a 0.1uf & 47uf capacitor.
- Line regulation is measured from low line to high line at rated load.
- Load regulation is measured from 10% to 100% rated load.
- Please prevent the converter from operating in overload or short circuit condition for more than 30 seconds.