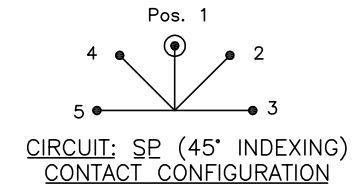
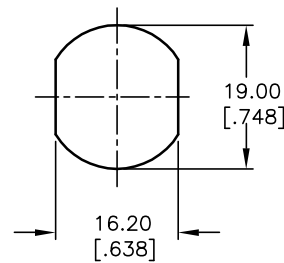


NOTES:

1. ALL DIMENSIONS IN MM [INCH]
2. GENERAL TOLERANCE: X.X=±0.4
X.XX=±0.25
3. TERM. NOS. FOR REF. ONLY
4. CONTACT RATING: 4A @125VAC/28VDC, 2A @250VAC
5. CONTACT RESISTANCE: Below 10 milliohms
6. DIELECTRIC STRENGTH: 1KV RMS min. at sea level
7. ELECTRICAL LIFE: 10,000 make-and-break cycles at full load.
8. MATERIALS:
CONTACTS: Silver Plated CU (Q Contact material)
TERMINALS: GOLD FLASH Over Silver (Q Contact material)
MOUNTING NUT: Nickel Plated zinc alloy
CONTACT SPRING: Piano Wire
9. ▲ KEYS: (2 Keys) Brass with code no. A126
▲ DENOTES CRITICAL PARAMETER.



SWITCH FUNCTION				
CONNECTED TERMINAL #				
POS. 1	POS. 2	POS. 3	POS. 4	POS. 5
8-1	1-2	2-3	7-8	6-7

LEGEND

- = Detent Positions (45°)
- ⊙ = Key pull possible in these positions

E-SWITCH®

TITLE				
KO130K (KEY CODE NO. A126)				
SCALE	DATE	DR	DWG	REV
1:1	9/18/03	AR	K200220	A

THE INFORMATION CONTAINED IN THIS DOCUMENT IS PROPRIETARY TO E-SWITCH AND IS NOT TO BE COPIED OR TRANSFERRED

A	13466	RELEASED FOR PRODUCTION	9/18/03	AR
REV.	ECN No.	DESCRIPTION	DATE	CHKD