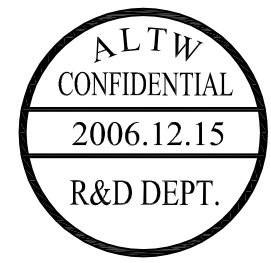
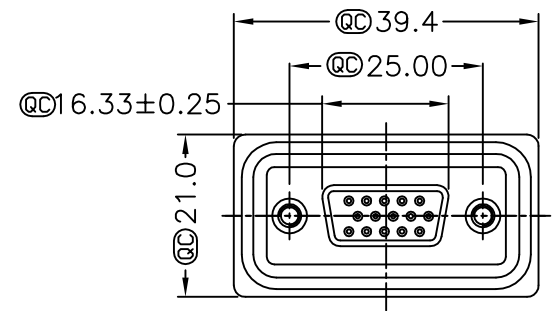
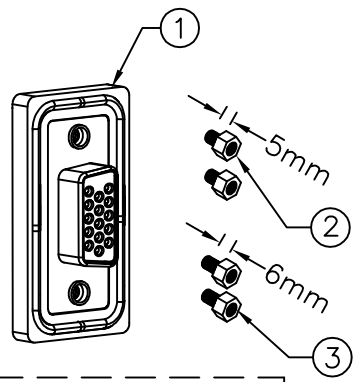
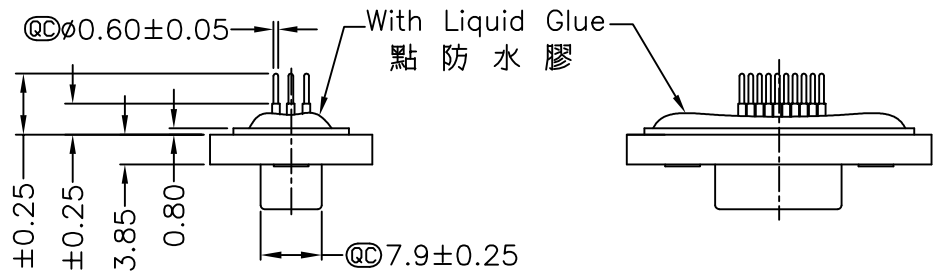
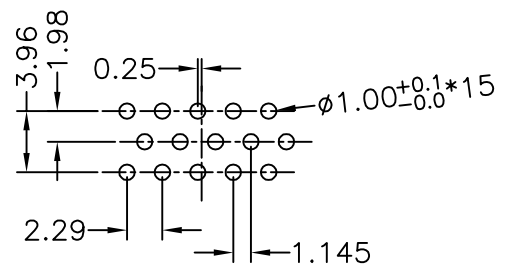
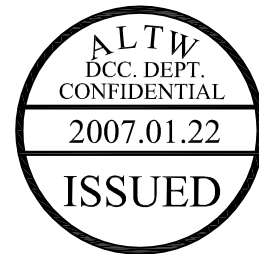


5	6	7	8
REV.	ECN NO.	DATE	SIGN



- Note:
- * \textcircled{C} Important Dimension.
 - * Waterproof Rate : IP68
IP68:1M of depth of water 24 hours
(防水等級 IP68)
(IP68:1米水深 24小時)
 - * Do Mating Test After Glued
點膠後, 須作對插測試
 - * HD-SUB Conn. : Black Core , PBT
 - * Plastic Jacket : Black , Nylon+GF
 - * Pin : Copper Alloy , Gold Plated
 - * Ring : Light Blue, Silicone
 - * Screw : Copper Alloy, Nickel Plated, #4-40 UNC

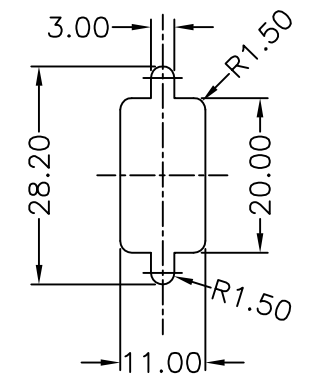


15 Pin Female Connector
PCB Pin Layout
Scale 2:1



Screw L=5.0 For Panel Thickness Under 1.2mm
適用板厚為 1.2mm 以下

Screw L=6.0 For Panel Thickness Between 1.2~2.0mm
適用板厚為 1.2~2.0mm



Recommended Panel Cut-Out
建議挖孔尺寸

UNIT:mm	
TOLERANCE	
.X	±0.25
.XX	±0.1
.XXX	±0.05
ANGLES	±1°

TITLE	
D-SUB Conn.	
Panel Screw HD15P F Conn. F Pin	
SCALE	SHEET
Free	1 OF 1
REV.	SIZE
A	A4
\textcircled{C} : Inspection Item	

Amphenol LTW
安費諾亮泰企業股份有限公司

ITEM NO	HDB-15PFFP-SL8001
DWG NO	HDB-15PFFP-SL8001
CUSTOMER	ALTW

DRAWN BY	DongYaLi
CHECKED BY	Simon
APPROVED BY	Max

DATE	2006/12/15
DATE	2006/12/15
DATE	2006/12/15

THIS DOCUMENT IS SUBJECT TO CHANGE WITHOUT NOTICE. IT IS CONFIDENTIAL AND A PROPERTY OF Amphenol LTW. DISCLOSURE TO THIRD PARTY HAS TO BE AUTHORIZED BY Amphenol LTW.