

5

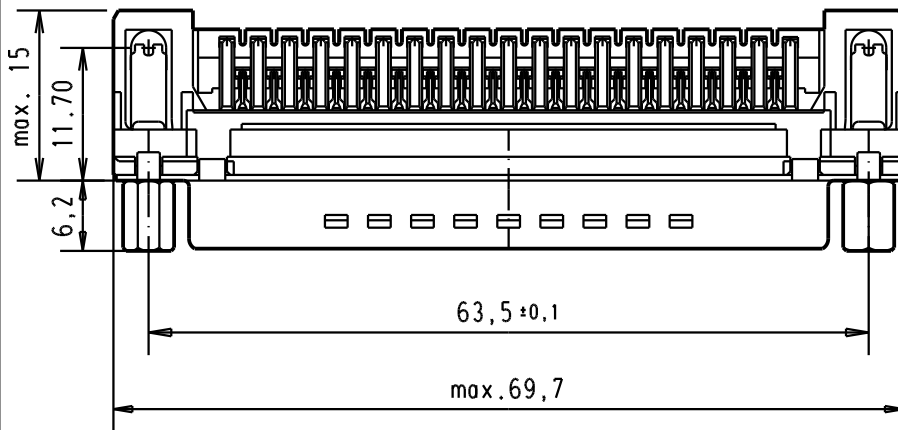
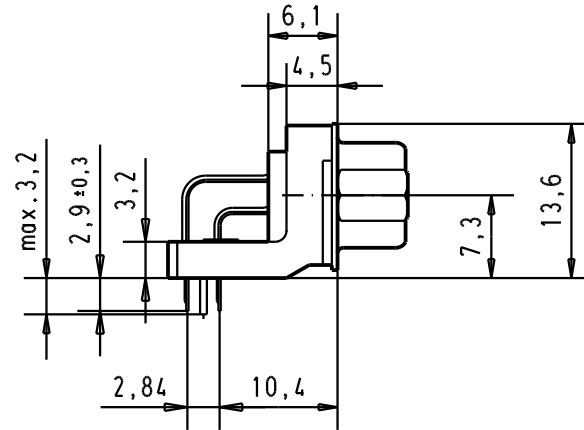
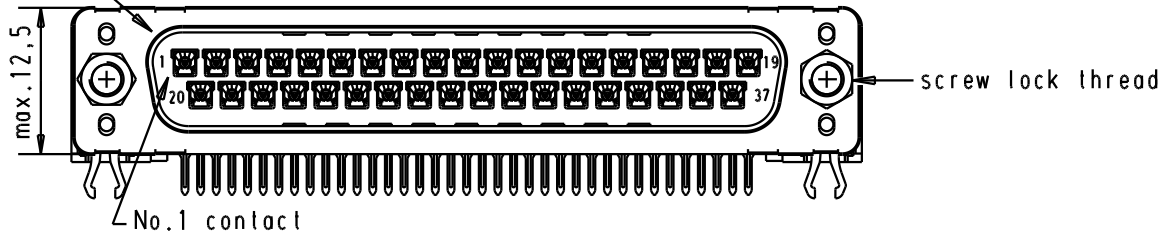
4

3

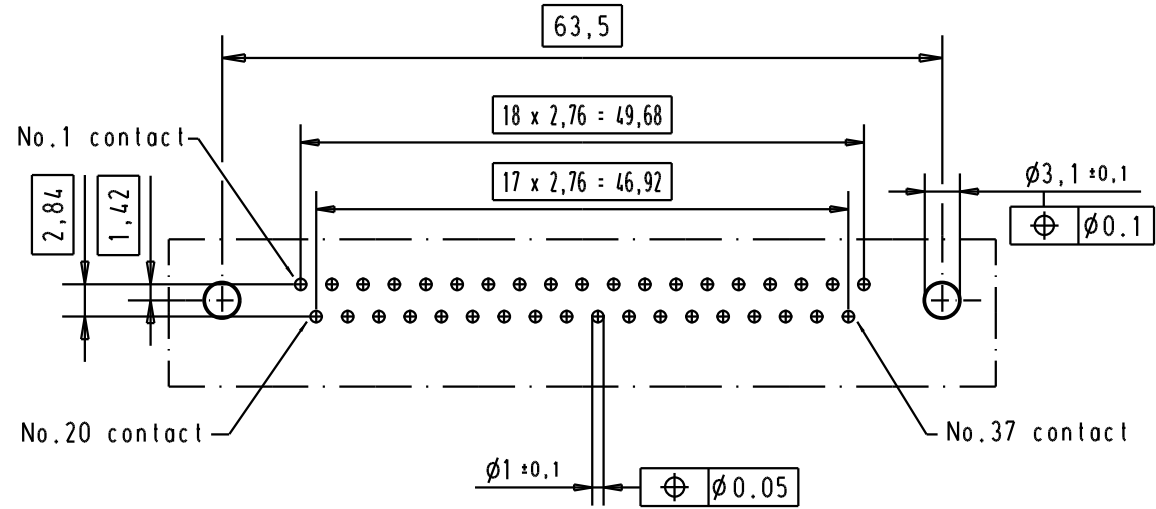
2

1

Mating face according to : MIL-C-24308 / DIN 41652 / CECC 75301-802



PCB layout hole component side



Connector retention and insertion forces on the PCB = 25 / 80 newtons

A

09 65 463 3833	M3	1																	
09 65 463 6833	M3	2																	
09 65 463 7833	M3	3																	
09 65 463 3813	4-40 UNC	1																	
09 65 463 6813	4-40 UNC	2																	
09 65 463 7813	4-40 UNC	3	31084	04/SEP/02	YT														
Part number	Screw lock thread	Performance level	Mod.	Dat.	Name	HARTING EURL F-95972 Paris					D-Sub, male, standard angle, 37 poles, with solder pin, screw lock, grounding board lock			Maßstab/ Scale 1.5:1					
											TB 0965463x8x3		Blatt/ Page 1						
											Sub.								

