



Description

This Thevenin termination network provides high performance resistor termination for VME64 and VME64x back planes.

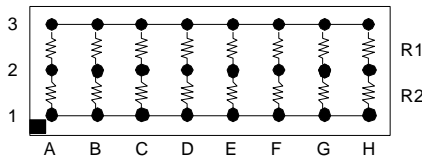
Designed with a ceramic substrate, this device minimizes parasitic capacitance and inductance, a primary cause of reduced system performance. In addition, the BGA package eases touting design, saving the designer many hours of printed circuit layout.

The BGA packaging has been proven to reduce rework and improve reliability

Features

- 8-Bit Termination Network
- VME64, VME64x Compliant
- Low Channel Capacitance
- Laser Trimmed Resistance to $\pm 1\%$
- Slim BGA Package
- RoHS Compliant Designs Available
 - Compatible with both lead and lead free processes

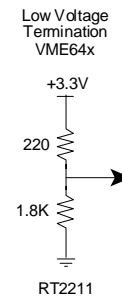
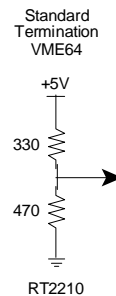
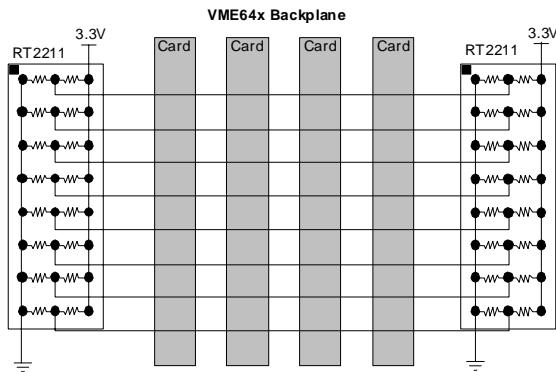
Style G



Electrical Specifications

Resistor Tolerance:	$\pm 1.0\%$
TCR	$\pm 200\text{ppm}/^\circ\text{C}$
Operating Temperature Range	-55°C to $+125^\circ\text{C}$
Maximum Resistor Power:	0.05 Watts at 70°C
Maximum Package Power:	1.0 Watts at 70°C
Process Requirements:	
Maximum Re-flow Temperature	Per IPC/JEDEC J-STD-020C

Typical Applications



Ordering Information

Standard Part No.	R1 Ω	R2 Ω	Array Size	Pitch (mm)	RoHS Part No.
RT1210B7	330	470	3 x 8	1.00	RT2210B7
RT1211B7	220	1800	3 x 8	1.00	RT2211B7

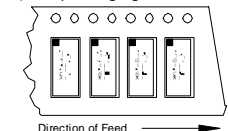
Packaging Information

Suffix	TR7	TR13
Tape Width	24 mm	24mm
Carrier Pitch	8 mm	8 mm
Reel Diameter	7 inch	13 inch
Parts/Reel	1,000	4,000

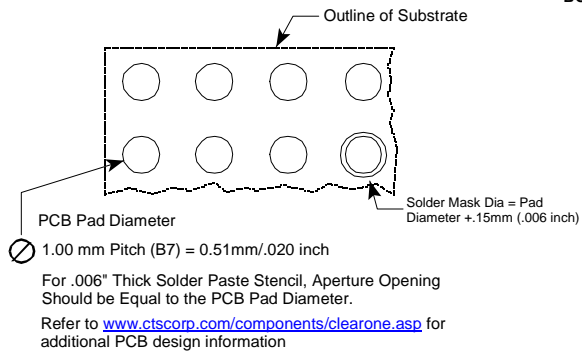
Part Number Coding
7 inch reel, Add TR7 to part number, example RT2210B7TR7

13 inch reel, Add TR13 to part number, example RT2210B7TR13

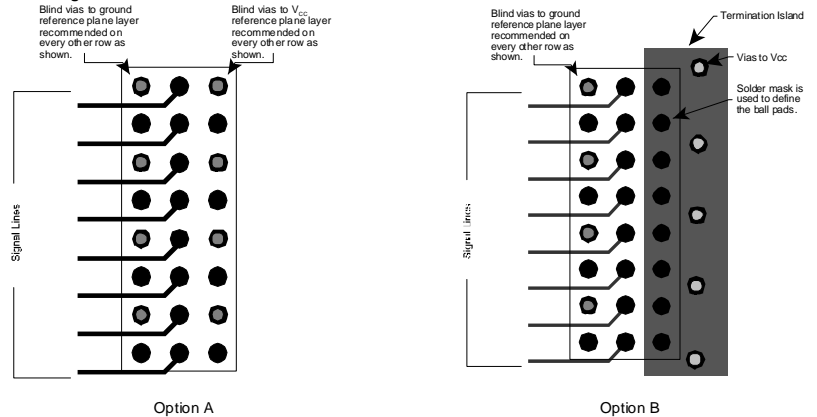
(Bulk packaging is not available)



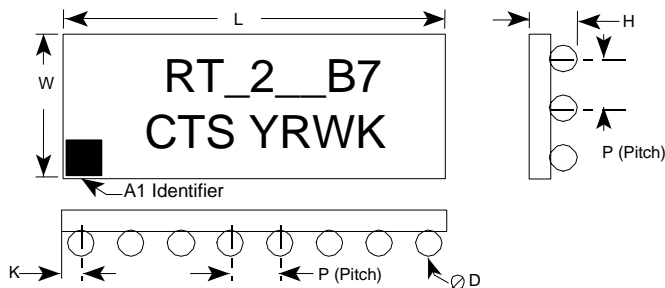
Recommended Land Pattern



BGA Routing Schemes



Mechanical Diagram



	1.0mm Pitch	L	W	H	P	D	K
RT1210B7	mm	8.00±0.15	3.00±0.15	1.19±0.15	1.00±0.25	0.64±0.05	0.50±0.25
RT1211B7							
RT2210B7	inch	.315±.006	.118±.006	.047±.006	.039±.010	.025±.002	.020±.010
RT2211B7							

Complete ClearONE Product, Processing, and Application Information can be found at the following link:

<http://www.ctscorp.com/components/clearone.asp>