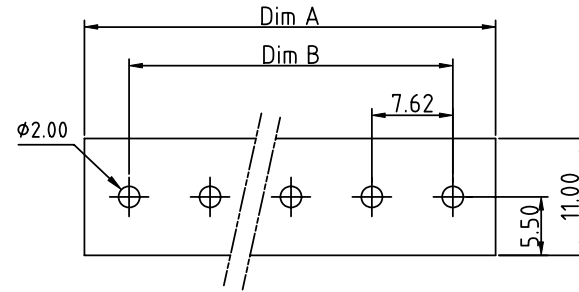
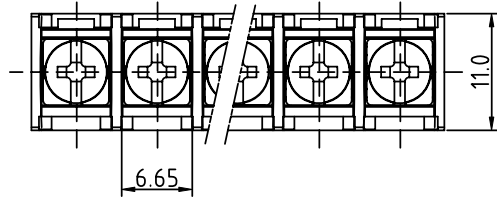
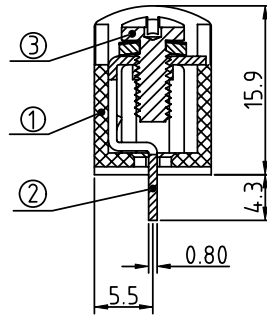
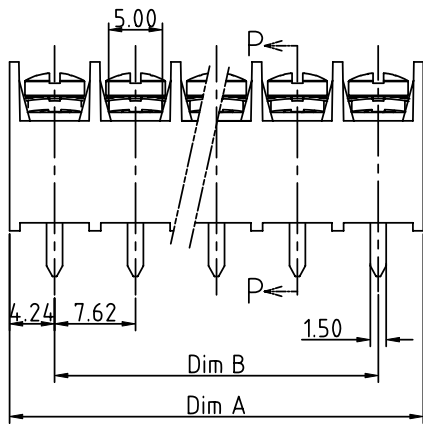


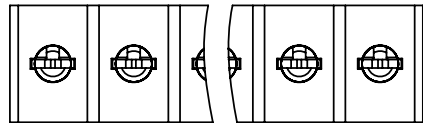
PRODUCT NUMBER	PITCH
YK321xx0x0JOG	7.62mm



RECOMMENDED P.C.B LAYOUT
TOP VIEW



SECTION P-P



MATERIALS & ELECTRICAL

RATED VOLTAGE & CURRENT:	300V, 15 A
WITHSTAND VOLTAGE:	AC 2000 V/Min
INSULATION RESISTANCE:	1000 MΩ OR MORE AT DC 500 V
OPERATING TEMPERATURE RANG:	-40 °C ~ +115 °C
SCREW TORQUE VALUE:	5.2 Lb-In
WIRE RANGE:	22 - 14 AWG
1) HOUSING:	THERMOPLASTIC, UL 94 V-0 BLACK
2) TERMINAL:	BRASS, 0.8t
3) TERMINAL SCREWS:	STEEL, #5-40

Safety Approval: us

PART NO.: YK 321xx 0 x 0 JOG

DIMENSION

Dim A	N×7.62±0.86
Dim B	(N-1)×7.62

N=Number of poles

Poles	Tolerance
2p-4p	±0.20
5p-21p	±0.30
22p-30p	±0.50

No. of poles
02 2 poles
03 3 poles
... ..
30 30 poles

Plated

Code	Terminal	Screw
0	G/F	G/F
1	G/F	Zinc
2	Tin	G/F
3	Tin	Zinc

RoHS compliant
(lead<4%)
In copper Alloy

mat'l. code	surface ASME Y14.5 ✓	tolerance ASME Y14.5	projection 	product family TERMINAL BLOCK
ltr	ecn no	dr	date	title TERMINAL BLOCK
				BARRIER TYPE
				scale
				dwg no YK321xx0x0JOG
				sheet 1 of 1
				size A4
				type CUSTOMER Drawing
sheet index	revision sheet	A	1	