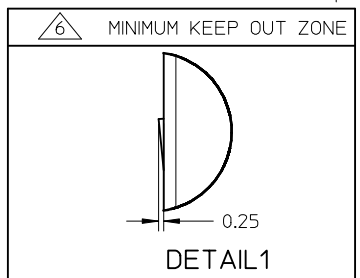


(0.45)  
(CARD POSHED POSITION)  
(1.25)  
(CARD LOCKED POSITION)  
(5.25)  
(CARD EJECTED POSITION)

- NOTES:
- MATERIALS: HOUSING, CAM, DUMMY CARD: HIGH TEMP THERMOPLASTIC, UL94V-0, BLACK  
TERMINAL, DETECT PIN: COPPER ALLOY  
METAL SHELL, COIL SPRING, CAM PIN: STAINLESS STEEL
  - FINISHES: 0.76µm MIN GOLD ON CONTACT AREA OVER 1.27µm NICKEL UNDERPLATE.  
2.54µm MIN MATTE TIN ON SOLDER TAIL AREA OVER 1.27µm NICKEL UNDERPLATE.  
GOLD FLASH ON SHELL SOLDER TAB OVER 1.27µm NICKEL UNDERPLATE.
  - PRODUCT SPECIFICATION: PS-78526-001
  - PACKAGING SPECIFICATION: PK-78526-001
  - MOLEX LOGO LOCATED APPROXIMATELY AS SHOWN.
- △ MINIMUM KEEP OUT ZONE FROM TOP SURFACE OF SHELL DURING INSERTION AND WITHDRAWAL OF SIM CARD  
▽ DATE CODE PRINTING: XX XX X  
DAY  
WEEK  
YEAR

HALOGEN FREE



785260011	W/O DUMMY CARD
785260001	WIHT DUMMY CARD
ASSEMBLY P/N.	DESCRIPTION

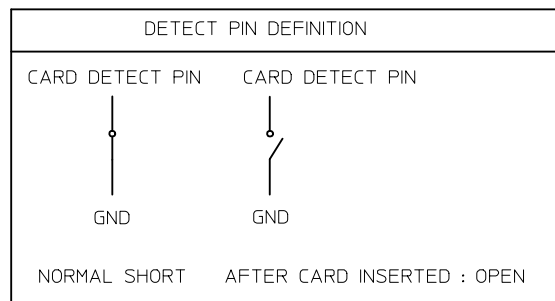
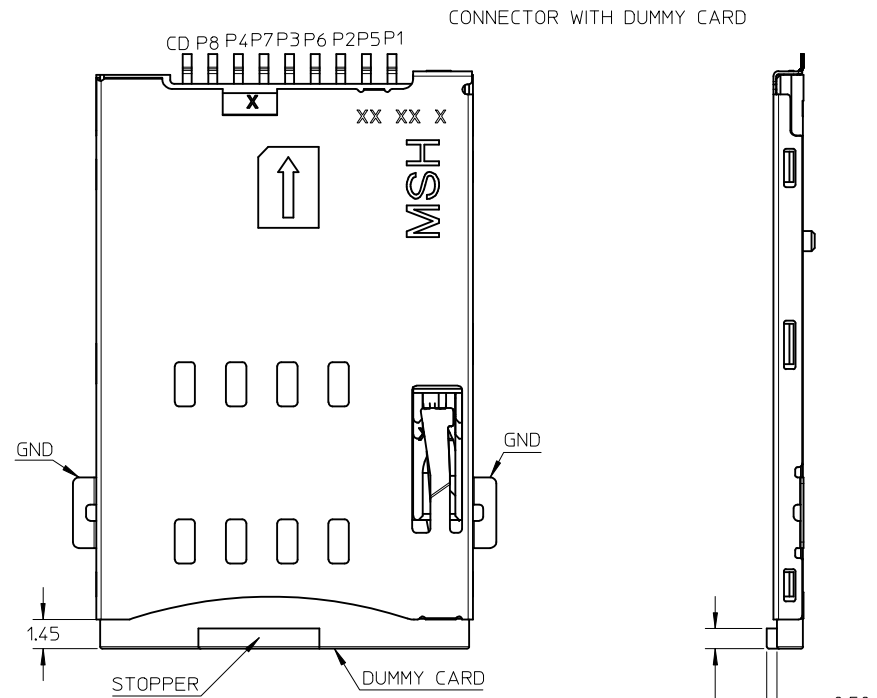
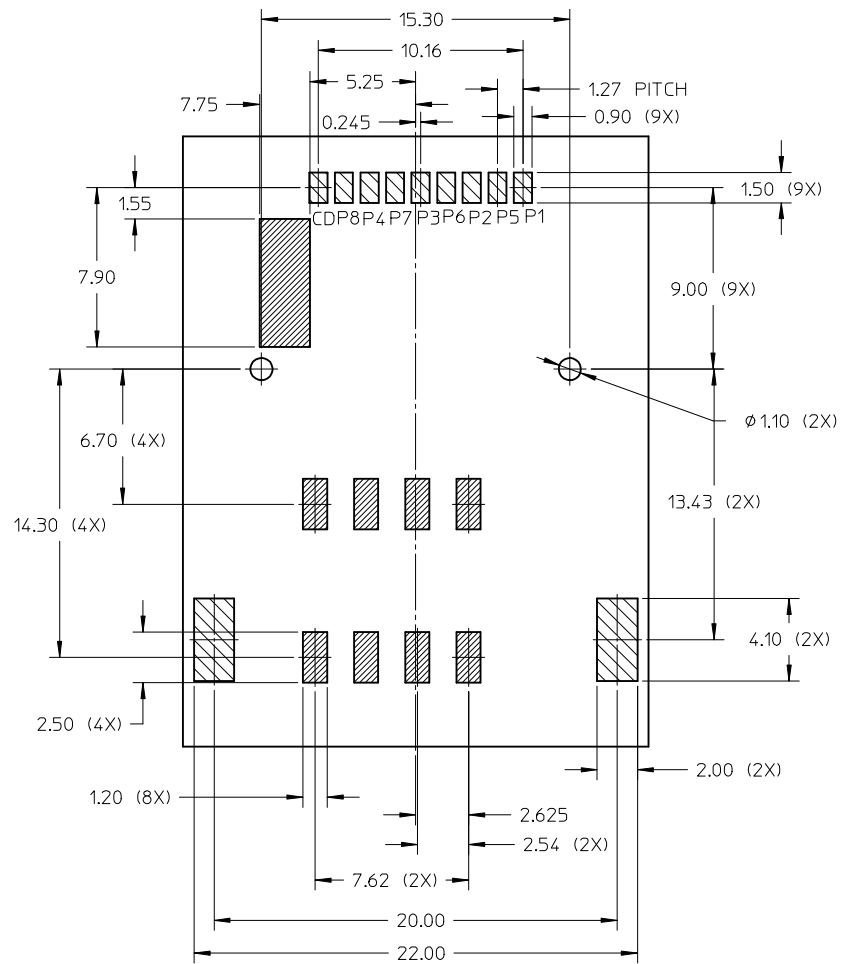
ADD NEW P/N  
EC NO: S2012-0960  
DRWN: JZENG  
CHKD: JTAN02  
APPR: KHL JM

2012/07/31  
2012/08/27  
2012/09/05

REV	DESCRIPTION
A8	

QUALITY SYMBOLS	GENERAL TOLERANCES (UNLESS SPECIFIED)	
	mm	INCH
FA=0	4 PLACES ± ---	± ---
FE=0	3 PLACES ± ---	± ---
FP=0	2 PLACES ± 0.25	± ---
	1 PLACE ± ---	± ---
	ANGULAR ± 3 °	
	DRAFT WHERE APPLICABLE MUST REMAIN WITHIN DIMENSIONS	

DIMENSION STYLE		SCALE	DESIGN UNITS	THIRD ANGLE PROJECTION
MM ONLY		NTS	METRIC	
DRAWN BY	DATE	TITLE		
CGOH	2009/07/17	SIM CARD CONNECTOR PUSH PUSH TYPE HEIGHT 1.5MM		
CHECKED BY	DATE	MOLEX INCORPORATED		
JTAN02	2009/08/17	DOCUMENT NO. SD-78526-001		
APPROVED BY	DATE	SHEET NO. 1 OF 3		
BOKOK	2010/11/11			
MATERIAL NO.	SIZE	THIS DRAWING CONTAINS INFORMATION THAT IS PROPRIETARY TO MOLEX INCORPORATED AND SHOULD NOT BE USED WITHOUT WRITTEN PERMISSION		
SEE TABLE	A3			



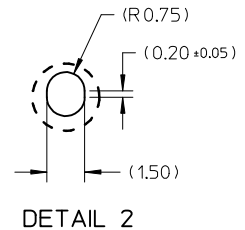
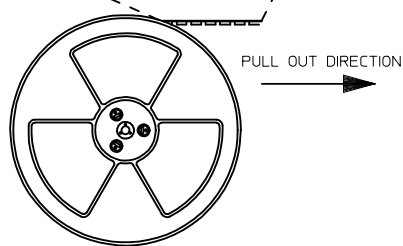
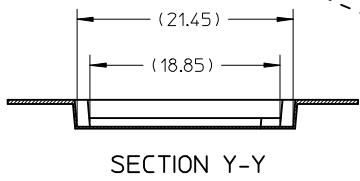
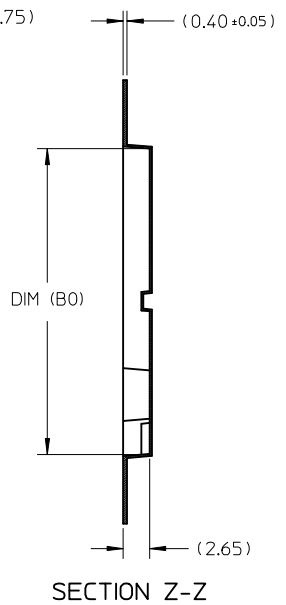
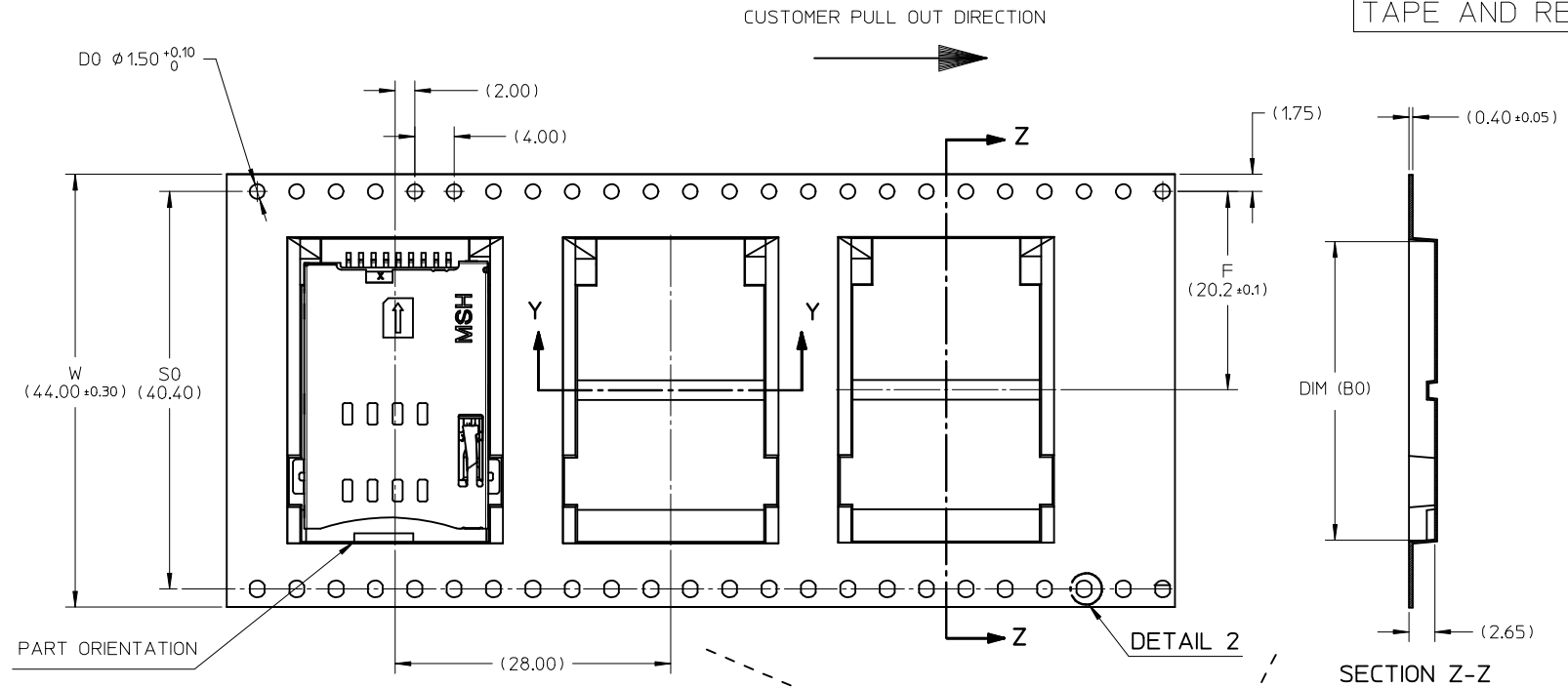
CIRCUIT TRACE KEEP OUT AREA

SOLDERING PAD AREA

SEE SHEET 1 EC NO: S2012-0960 DRWN: JZENG CHKD: JTAN02 APPR: KHL JM	2012/07/31 2012/08/27 2012/09/05	QUALITY SYMBOLS $F_A=0$ $F_G=0$ $F_P=0$	GENERAL TOLERANCES (UNLESS SPECIFIED) mm      INCH	DIMENSION STYLE MM ONLY	SCALE NTS	DESIGN UNITS METRIC	THIRD ANGLE PROJECTION	
	4 PLACES ± --- ± --- 3 PLACES ± --- ± --- 2 PLACES ± 0.25 ± --- 1 PLACE ± --- ± ---	DRAWN BY: CGOH CHECKED BY: JTAN02 APPROVED BY: BOKOK	DATE: 2009/07/17 DATE: 2009/08/17 DATE: 2010/11/11	ANGULAR ± 3 °	TITLE: SIM CARD CONNECTOR PUSH PUSH TYPE HEIGHT 1.5MM	MATERIAL NO.	DOCUMENT NO.	SHEET NO.
	DRAFT WHERE APPLICABLE MUST REMAIN WITHIN DIMENSIONS	SEE SHEET 1	MOLEX INCORPORATED	SD-78526-001	2 OF 3	THIS DRAWING CONTAINS INFORMATION THAT IS PROPRIETARY TO MOLEX INCORPORATED AND SHOULD NOT BE USED WITHOUT WRITTEN PERMISSION		
	A8	REV	SIZE A3					

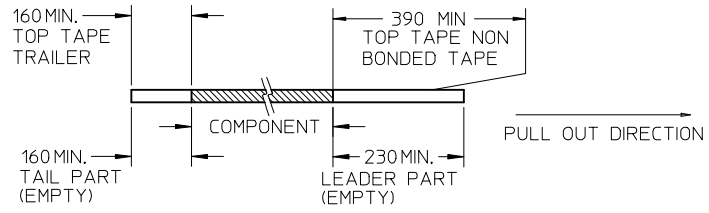
10 9 8 7 6 5 4 3 2 1

TAPE AND REEL PACKING

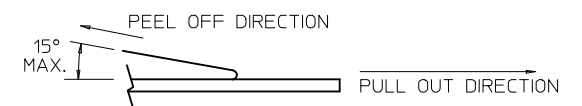


NOTES:

1. LEADER AND TRAILER TAPE



2. PEELING OFF FORCE OF THE TOP TAPE: 10 - 130gf. (PEELING DIRECTION AS SHOWN IN FOLLOWING FIGURE)



- 3. TAPE AND REEL SPECIFICATION IS AS PER EIA-481.
- 4. TAPE AND REEL QUANTITY : 600 PCS/ REEL.
- 5. THE TAPE IS TREATED FOR ANTI-STATIC.

785260011	28.50	477995127
785260001	30.70	887962916
ASSEMBLY P/N	DIM (B0)	PACKAGING P/N

SEE SHEET 1 EC NO: S2012-0960 DRWN: JZENG CHKD: JTAN02 APPR: KHLIM	2012/07/31 2012/08/27 2012/09/05	DESCRIPTION QUALITY SYMBOLS $F_A=0$ $F_C=0$ $F_P=0$	GENERAL TOLERANCES (UNLESS SPECIFIED)		DIMENSION STYLE MM ONLY		SCALE NTS	DESIGN UNITS METRIC	THIRD ANGLE PROJECTION			
				mm	INCH	DRAWN BY CGOH	DATE 2009/07/17	TITLE SIM CARD CONNECTOR PUSH PUSH TYPE HEIGHT 1.5MM				
			4 PLACES	± ---	± ---	CHECKED BY JTAN02	DATE 2009/08/17	MOLEX INCORPORATED				
			3 PLACES	± ---	± ---	APPROVED BY BOKOK	DATE 2010/11/11					
2 PLACES	± 0.25	± ---	ANGULAR ± 3 °		MATERIAL NO.		DOCUMENT NO.		SHEET NO.			
1 PLACE	± ---	± ---	DRAFT WHERE APPLICABLE MUST REMAIN WITHIN DIMENSIONS		SEE TABLE		SD-78526-001		3 OF 3			
REV			SIZE A3		THIS DRAWING CONTAINS INFORMATION THAT IS PROPRIETARY TO MOLEX INCORPORATED AND SHOULD NOT BE USED WITHOUT WRITTEN PERMISSION							

9 8 7 6 5 4 3 2 1