

# MINI QUARTER TURN - SPRING LOADED



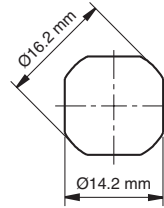
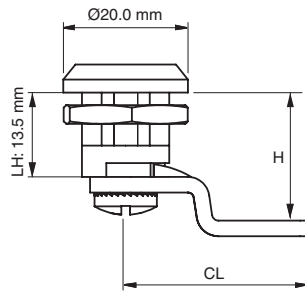
\*Example with cam.  
Cam sold separately.

### Specifications

- Material:  
Housing: Zinc Alloy (Zamak) DIN-EN 1774-ZnAl4Cu1 PA6 GFR 30  
Driver: Zinc Alloy (Zamak) DIN-EN 1774-ZnAl4Cu1 or PA6 GFR 30  
Knob: PA6 GFR 30  
Cam: Steel or Plastic  
Gasket: Rubber  
Finish: Chrome

### Features

- Specially designed internal spring provides 1 mm tactile resistance
- Sealing washer not supplied
- Applications: Electric panels, machinery covers



Cut Out

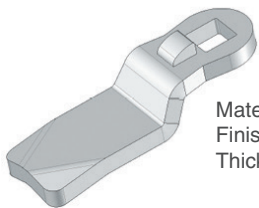
### Driver/Head Style



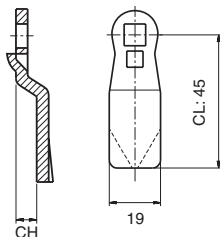
Slot (2x4)

Item Number		Driver / Head Style	Cam
Zinc Alloy / Chrome	Zinc Alloy / Black	Slot (2x4)	Select Cam Below
066114200	066124200		

### Steel Cam



Material: Steel  
Finish: Zinc plated  
Thickness: 4 mm



Item Number	CH (mm)	CL (mm)	H (mm)
30403084	0	33	13.5
30403184	0	25	13.5
30403183	6	25	19.5
30403085	7	30	20.5
30403196	-6	25	7.5