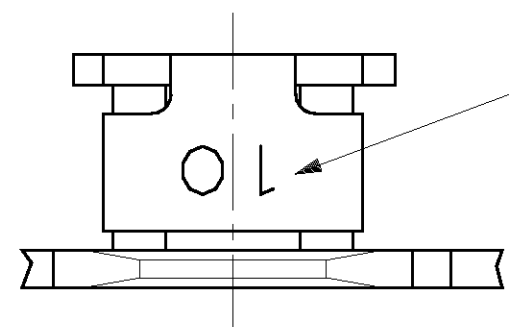
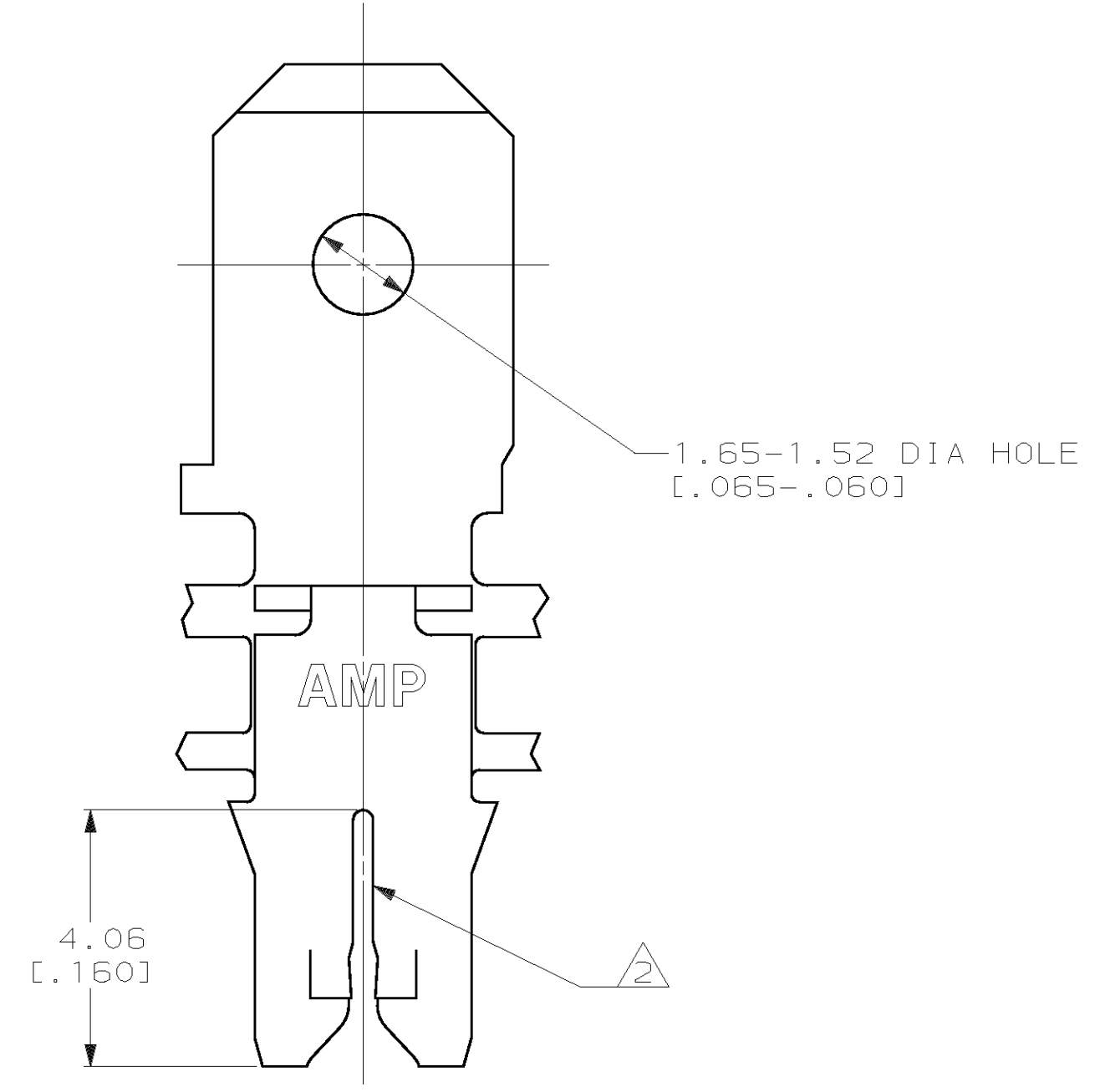
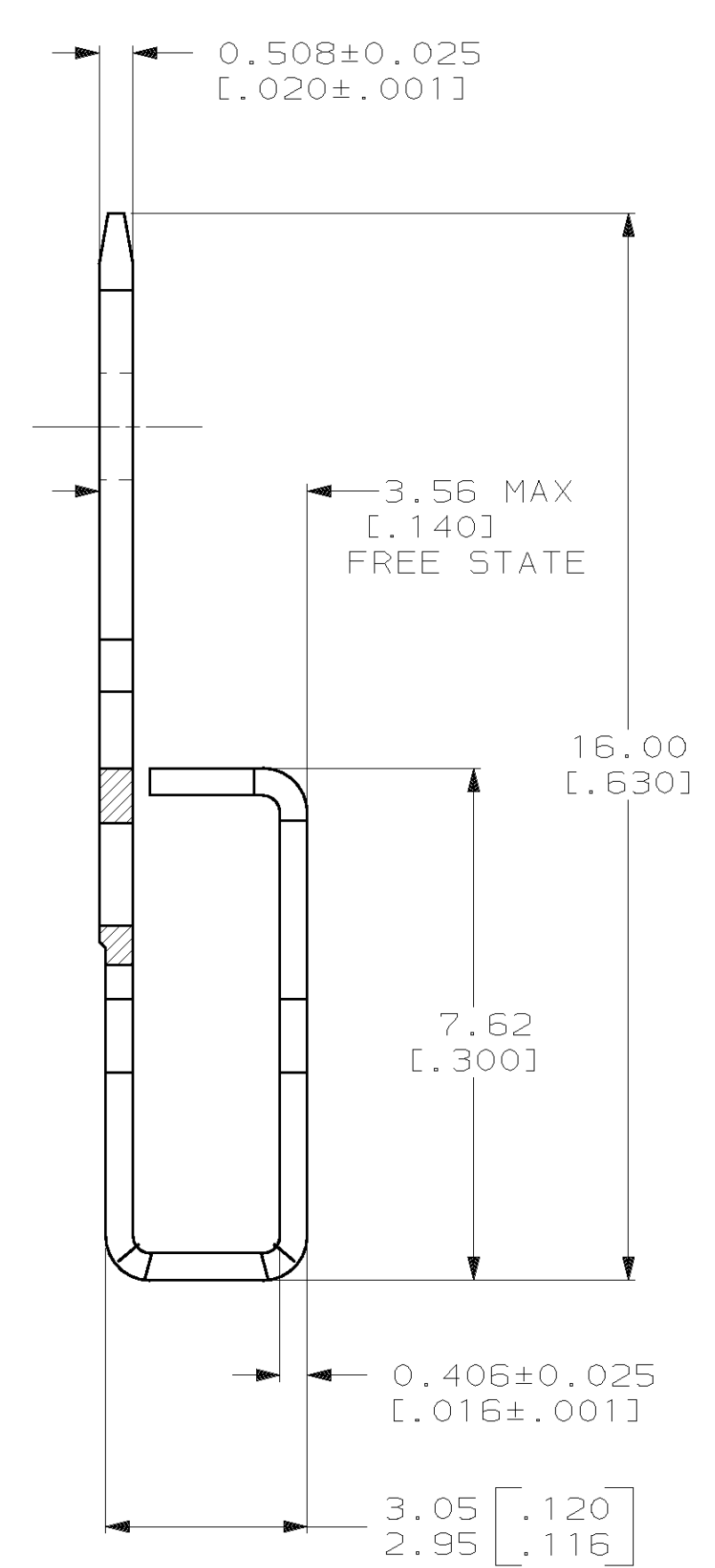
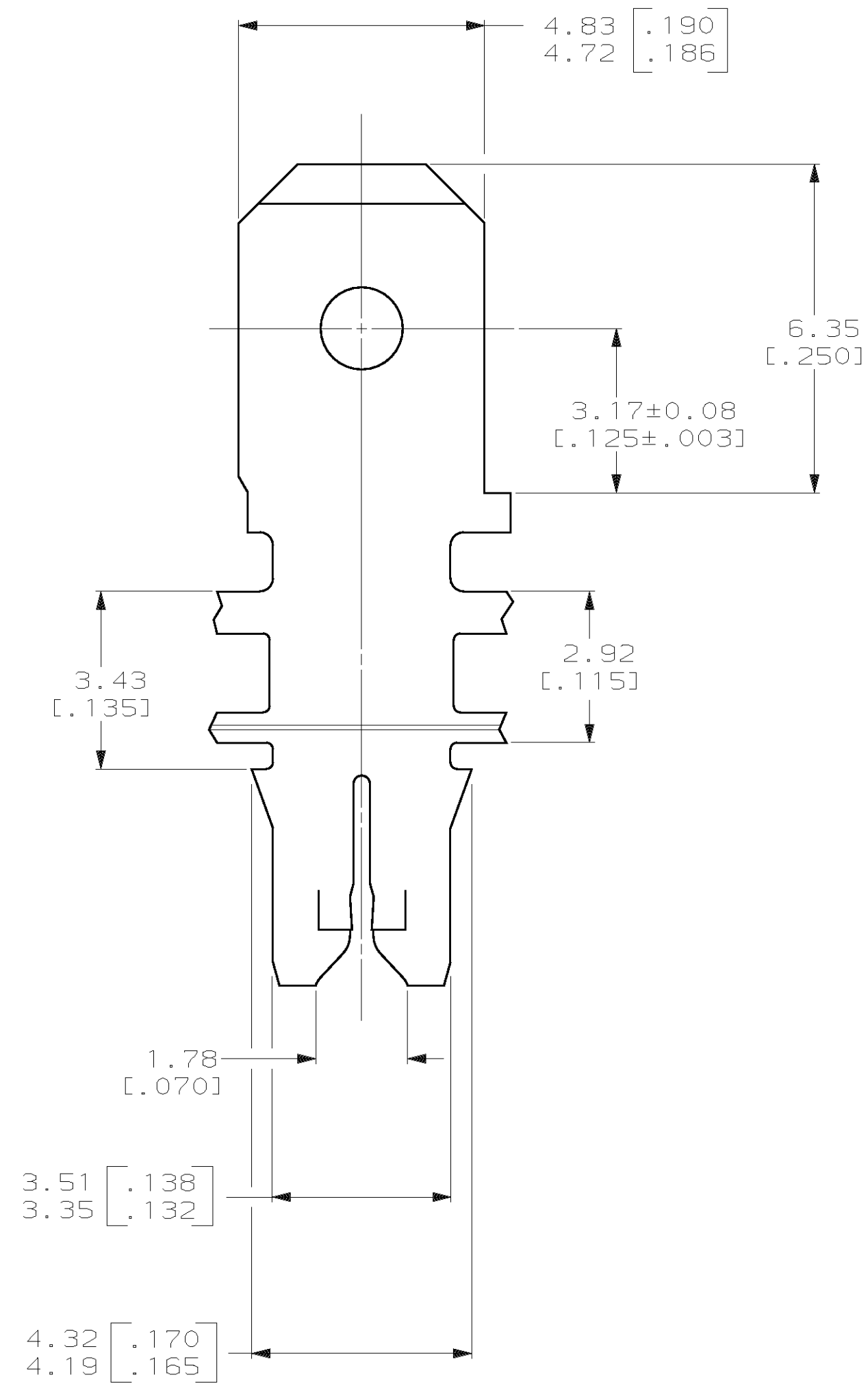


LOC		DIST		P		F		ZONE		LTR		REVISIONS		DATE	APPD
AF	50													31JAN97	RG/NN
												D	REV PER 0L10-0043-97		

- 1 CONTINUOUS STRIP ON REELS WITH TERMINALS LOCATED ON 5.59±0.08 [.220±.003] CENTERS
- 2 SLOT TERMINATES EITHER A SINGLE OR DOUBLE MAGNET WIRE OF THE SAME SIZE AND TYPE. COPPER RANGE: 0.36\_0.57mm [#27-#23] AWG.
- 3 AFTER INSERTION INTO PLASTIC HOLDER TAB PORTION MUST BE BENT OVER 45° TO 90° OR POTTED-IN TO PREVENT PULL-OUT WHEN MATING RECEPTACLE IS DISCONNECTED.
- 4 VARNISH RESIST OVER 0.002032 [.000080] MIN TIN PER MIL-T-10727.
- 5 0.002032 [.000080] MIN TIN



IDENTIFICATION NUMBER 10 FOR MAGNET WIRE RANGE



DO NOT SCALE PRINT. UNLESS SPECIFIED DIMENSIONS IN mm [INCHES] TOLERANCES ON: 2 PLC DEC ± 0.25 [.010] 3 PLC DEC ± - ANGLES ± -	DR 8/26/92 MICHAEL S. FEHER
	CHK 8/26/92 JEFF R. RUTH
MATERIAL  H03 PRE-MILLED BRASS	APPD 8/28/92 NELSON E. NEFF
	APPD 8/28/92 TERRY L. SHUTTER
FINISH  SEE TABLE	PRODUCT SPEC 108-2012
	APPLICATION SPEC 114-2046
WEIGHT -	

FINISH		PART NO	
4 5		63664-2	
4 5		63664-1	
<b>AMP</b> AMP Incorporated Harrisburg, PA 17105-3608			
NAME TERMINAL, TAB, 4.75 [.187] FASTON, MAG-MATE			
SIZE	CAGE CODE	DRAWING NO	
C	00779	C=63664	
SCALE	10:1	SHEET	1 OF 1

THIS DRAWING IS A CONTROLLED DOCUMENT FOR AMP INCORPORATED. IT IS SUBJECT TO CHANGE AND THE CONTROLLING ENGINEERING ORGANIZATION SHOULD BE CONTACTED FOR THE LATEST REVISION.