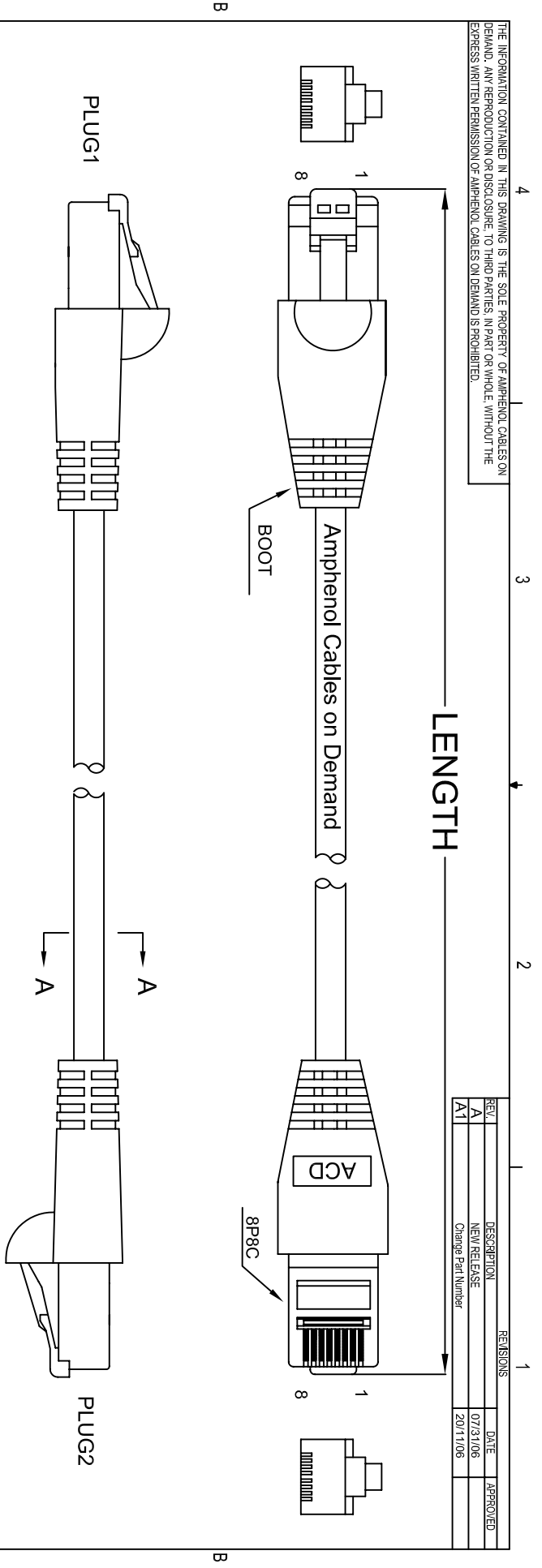


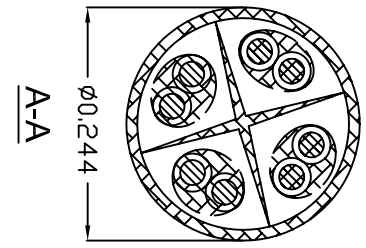
THE INFORMATION CONTAINED IN THIS DRAWING IS THE SOLE PROPERTY OF AMPHENOL CABLES ON DEMAND. ANY REPRODUCTION OR DISCLOSURE TO THIRD PARTIES, IN PART OR WHOLE, WITHOUT THE EXPRESS WRITTEN PERMISSION OF AMPHENOL CABLES ON DEMAND IS PROHIBITED.

REVISIONS		DATE	APPROVED
REV. A	DESCRIPTION NEW RELEASE	07/31/06	
A1	Change Part Number	20/11/06	



LENGTH & P/N Table

LENGTH	P/N	Cable Color
1FT ± 1 inch	MP-64RJ45UNNK-001	BLACK
3FT ± 1 inch	MP-64RJ45UNNK-003	BLACK
5FT ± 2 inch	MP-64RJ45UNNK-005	BLACK
6FT ± 2 inch	MP-64RJ45UNNK-006	BLACK
10FT ± 3 inch	MP-64RJ45UNNK-010	BLACK
14FT ± 3 inch	MP-64RJ45UNNK-014	BLACK
25FT ± 4 inch	MP-64RJ45UNNK-025	BLACK
50FT ± 8 inch	MP-64RJ45UNNK-050	BLACK
100FT ± 8 inch	MP-64RJ45UNNK-100	BLACK



PIN OUT: T568B		
PLUG 1	PLUG 2	COLOR
PIN 1	PIN 1	WHITE/ORANGE
PIN 2	PIN 2	ORANGE
PIN 3	PIN 3	WHITE/GREEN
PIN 4	PIN 4	BLUE
PIN 5	PIN 5	WHITE/BLUE
PIN 6	PIN 6	GREEN
PIN 7	PIN 7	WHITE/BROWN
PIN 8	PIN 8	BROWN

UNLESS OTHERWISE SPECIFIED DIMENSIONS ARE IN INCHES TOLERANCES ARE:		E&R NO.	
DECIMALS	±.X	DRAWN	DATE
.X	±.XX	LF	07/31/06
XX	±.XXX	CHECKED	BA
XXX	±.XXX	RESP ENG	07/31/06

Amphenol Cables on Demand
20 VALLEY ST. ENDICOTT, NY 13760
ASM CBL RJ45/RJ45
CAT.6 4PR PATCH CORDS



THIRD ANGLE PROJECTION		SIZE DWG. NO.	
APPROVALS	DATE	A	MP-64RJ45UNNK-XXX
SCALE	SHEET	OF	REV. A1

NOTES: UNLESS OTHERWISE SPECIFIED