

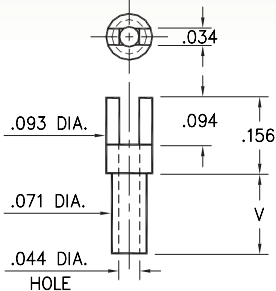
MALE PCB PINS

SOLDER TERMINALS SLOTTED

2314

2314-X-01-XX-00-00-07-0

Swage mount in .076 hole

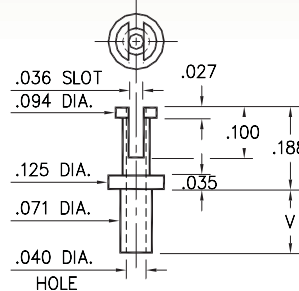


Basic Part Number	Board Thickness	Length V
2314-1	.031	.045
2314-2	.062	.094
2314-3	.094	.125
2314-4	.125	.156

2511

2511-X-01-XX-00-00-07-0

Swage mount in .076 hole

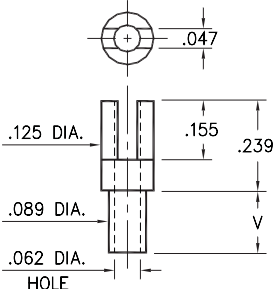


Basic Part Number	Board Thickness	Length V
2511-1	.031	.063
2511-2	.062	.094
2511-3	.094	.125
2511-4	.125	.156

2515

2515-X-01-XX-00-00-07-0

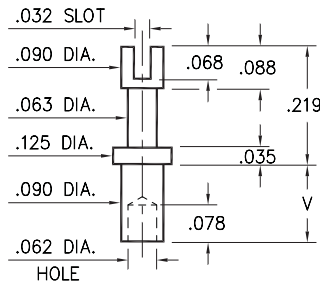
Swage mount in .094 hole



2516

2516-X-01-XX-00-00-07-0

Swage mount in .094 hole

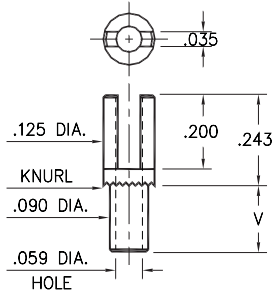


Basic Part Number	Board Thickness	Length V
251X-1	.031	.075
251X-2	.062	.105
251X-3	.094	.135
251X-4	.125	.147

2502

2502-X-01-XX-00-00-07-0

Swage mount in .094 hole



Basic Part Number	Board Thickness	Length V
2502-1	.031	.080
2502-2	.062	.111
2502-3	.094	.143
2502-4	.125	.174

SPECIFICATIONS:

Pin Material: Brass Alloy 360, 1/2 Hard
(Swage pins are annealed)

Dimensions: Inches

Tolerances On: Lengths: $\pm .005$
Diameters: $\pm .002$
Angles: $\pm 2^\circ$



ORDER CODE: XXXX - X - 01 - XX - 00 - 00 - 07 - 0

BASIC PART #

SPECIFY PIN FINISH:

- 01 200 μ " TIN/LEAD OVER NICKEL
- ◆ 80 200 μ " TIN OVER NICKEL (RoHS)
- ◆ 44 300 μ " SILVER OVER COPPER (RoHS)
- 50 300 μ " ELECTRO-SOLDER
(60/40 SnPb)

