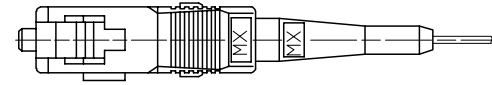
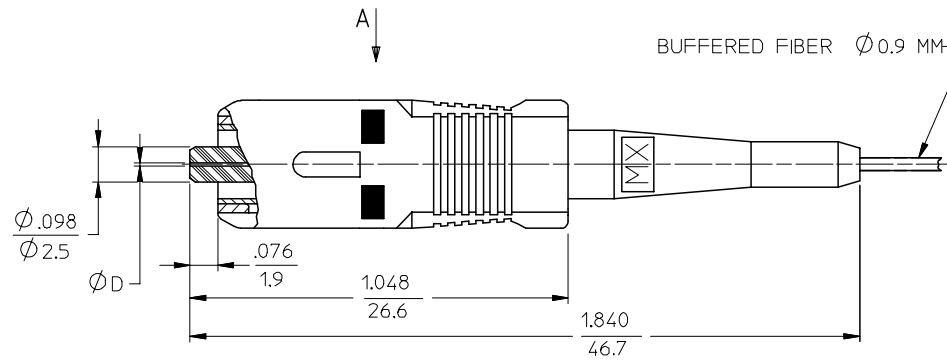
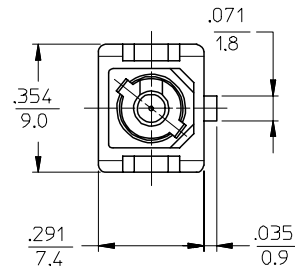


CONNECTOR P/N	Ø (Min)	FERRULE MATERIAL	BOOT COLOR	HOUSING COLOR	CONNECTOR TYPE
106063-0500	127	Zr	BLUE	BLUE	MULTIMODE
106063-0520*			BEIGE	BEIGE	
106063-0560			BLACK	BLACK	
106063-0590*			RED	RED	
106063-0570			YELLOW	BLUE	
106063-0580	125.5		BLACK	BLACK	SINGLE MODE
106063-2510			RED	RED	
106063-2500			BLUE	BLUE	
106063-2570			BEIGE	BEIGE	
106063-2580			BLACK	BLACK	
106063-3500	128		RED	RED	MULTIMODE
106063-3560			YELLOW	BLUE	
106063-3570			BLACK	BLACK	
106063-3580			RED	RED	
106063-4500			125	YELLOW	
106063-4510	BLACK	BLACK			
106063-5500	RED	RED			
106063-5590*	126	YELLOW	BLUE	SINGLE MODE	
106063-5570		BLACK	BLACK		
106063-5580		RED	RED		
106063-7500	127	YELLOW	BLUE	SINGLE MODE	
106063-3540	128	BEIGE	BEIGE		MULTIMODE



VIEW A  
SCALE 2.5:1



NOTES:

1. ALL DIMENSIONS ARE FOR REFERENCE ONLY.

\*2. P/N 106063-0590, P/N 106063-5590, P/N 106063-3540 AND P/N 106063-0520 ARE BULK PACKED IN QUANTITIES OF 100PCS.

ENTER DESCRIPTION EC NO: MF2006-0424 DRAWN/RPACIFICI 2006/01/24 CHKD: 2006/01/24 APPR: JGUMIN 2006/01/24 REVISIONS	QUALITY SYMBOLS	GENERAL TOLERANCES (UNLESS SPECIFIED)	DIMENSION STYLE	SCALE	DESIGN UNITS	THIRD ANGLE PROJECTION
	$\nabla=0$ $\nabla=0$	mm INCH 4 PLACES ± --- ± --- 3 PLACES ± --- ± --- 2 PLACES ± --- ± --- 1 PLACE ± --- ± --- ANGULAR ±1/2°	INCH ONLY	4:1	INCH	
				DRAWN BY DATE	TITLE	
				CHECKED BY DATE	SC BARE FIBER CONNECTOR	
			APPROVED BY DATE	MOLEX INCORPORATED		
		DRAFT WHERE APPLICABLE MUST REMAIN WITHIN DIMENSIONS	MATERIAL NO.	DOCUMENT NO.	SHEET NO.	
			SEE TABLE	SD-106063-X5X0	1 OF 1	
			THIS DRAWING CONTAINS INFORMATION THAT IS PROPRIETARY TO MOLEX INCORPORATED AND SHOULD NOT BE USED WITHOUT WRITTEN PERMISSION			