

Data Sheet

FR20CxxVBDN

Page 1/4

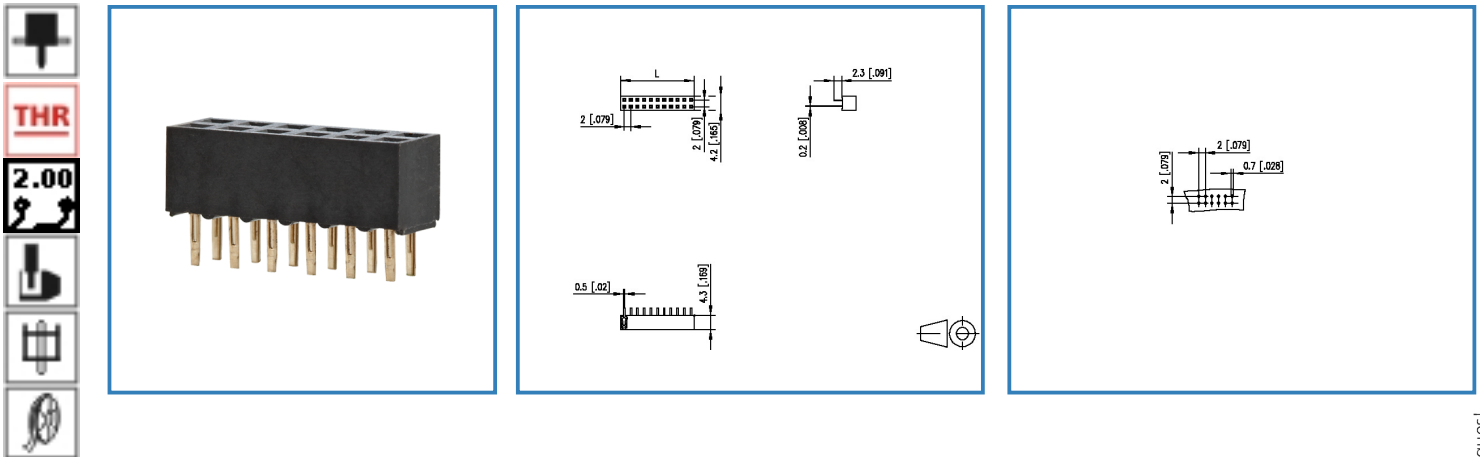
P/N

FR20CxxVBDN

xx=number of poles

2017/05/05

Illustration



see enlarged drawing at the end of the document

Product specification

- female connector, THR solderable
- centerline 2.00 mm, direction of connection vertical 0°
- closed ends
- color black
- Tape & Reel packaging
- dual rows

© 2017 METZ CONNECT - Technische Änderungen vorbehalten! Subject to modifications! Sous réserve de modifications techniques!



Data Sheet

FR20CxxVBDN

Page 2/4

P/N

FR20CxxVBDN

xx=number of poles

2017/05/05

Technical Data

General Data

Solder pin length	2.20 mm
min. number of poles	2
max. number of poles	40
clearance/creepage dist.	0.65 mm
protection category	IP 00

Approvals

Rated current	1 A
---------------	-----

Material

insulating material	PE-HT
contact material	CuSn
Glow-Wire Flammability GWFI	-
Glow-Wire Flammability GWIT	-
contact surface	Ni + Au
contact pin material	CuSn
contact pin surface	Ni + Au Flash

Climatic properties

upper limit temperature	105 °C
lower limit temperature	-40 °C

General

solderability	Acc. to IPC/JEDEC J-STD-020D-MSL 1
Tolerance	ISO 2768 -mH

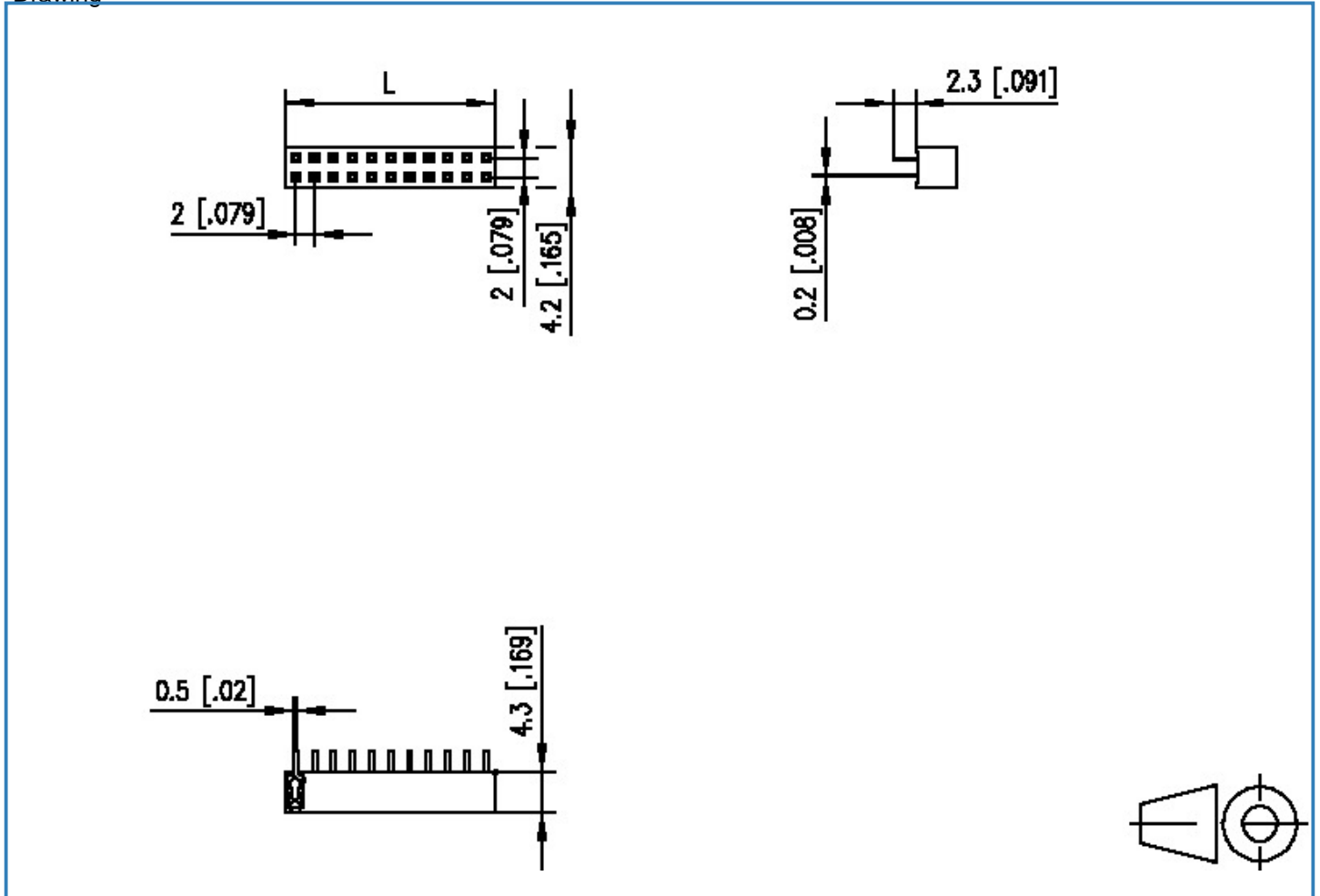


Data Sheet

FR20CxxVBDN

Illustration

Drawing



$$L = (\text{pole size} - 1) \times \text{centerline} + 2.0 [0.079]$$



Data Sheet

FR20CxxVBDN

Page 4/4

P/N

FR20CxxVBDN

xx=number of poles

2017/05/05

PCB Layout

